

SERVICE MANUAL

DATSUN 240Z
MODEL S30 SERIES



NISSAN MOTOR CO., LTD.
TOKYO, JAPAN

GI

SECTION GI

GENERAL INFORMATION

MODEL VARIATION	GI- 1
IDENTIFICATION NUMBER	GI- 1
APPROXIMATE REFILL CAPACITIES	GI- 2
RECOMMENDED PETROL (FUEL)	GI- 3
RECOMMENDED LUBRICANTS	GI- 3
LIFTING POINTS AND TOWING	GI- 4

GENERAL INFORMATION

MODEL VARIATION

Models	Engine type	Transmission type-speed	Final gear ratio	Tire size	Remarks
HLS30U	L24	F4W71B-4	3.364	175HR-14	Except Canada
HLS30UN					Canada only
HLS30AU		3N71B-3	3.545		Except Canada
HLS30AUN					Canada only

IDENTIFICATION NUMBERS

The unit and car numbers are stamped and registered at the factory.

The engine and vehicle identification numbers are used on legal documents.

These numbers are used for factory communication such as Technical Report, Warranty Claim, Service Journal and other information.

Car identification plate

The car identification plate is located on the right hand panel of the hood ledge.

The plate contains the vehicle type, engine capacity, max. horse-power, wheelbase and engine and car serial numbers.

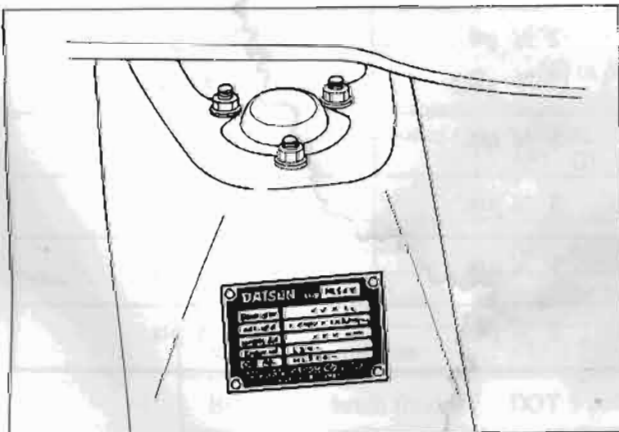


Fig. GI-1 Car identification plate location

Car serial number

The car serial number is stamped on the instrument panel and can be seen from outside. The car number consists of the vehicle model and the serial number.

(HLS30-XXXXX)



Fig. GI-2 Car serial number location

Engine serial number

The engine serial number is stamped on the right-hand side of the cylinder block.

GENERAL INFORMATION

The number is broken down as shown in the following Figure GI-3.

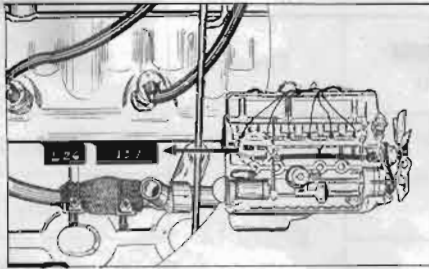


Fig. GI-3 Engine serial number location

Color code number label

Body color number plate is attached on the top face of radiator core support.



Fig. GI-4 Body color number location

Body color number		Body color
1	110	Red
2	112	Yellow
3	113	Green Metallic
4	114	Brown Metallic
5	115	Blue Metallic
6	901	Silver Metallic
7	904	White (except Canada)
8	918	Orange

APPROXIMATE REFILL CAPACITIES

		Liters	U.S. Measure	Imper. Measure
Fuel tank		60	15 $\frac{3}{8}$ gal.	13 $\frac{1}{4}$ gal.
Engine cooling system (with heater)	*1	9.1 (9.9)	2 $\frac{3}{8}$ gal. (2 $\frac{5}{8}$ gal.)	2 gal. (2 $\frac{1}{8}$ gal.)
Engine crank case	*2	4.9	5 $\frac{1}{8}$ qts.	4 $\frac{3}{8}$ qts.
Transmission case	Manual	1.5	3 $\frac{1}{8}$ pts.	2 $\frac{5}{8}$ pts.
	Automatic	5.5	5 $\frac{1}{8}$ qts.	4 $\frac{3}{8}$ qts.
Differential case		1.0	2 $\frac{1}{8}$ pts.	1 $\frac{1}{4}$ pts.

*1 Includes 0.8 liter ($\frac{1}{4}$ U.S.gal, $\frac{1}{8}$ Imp.gal) required for heater.

*2 Includes 0.9 liter (1 $\frac{1}{8}$ U.S.pts., 1 $\frac{5}{8}$ Imp.pts.) required for oil filter replacement.

GENERAL INFORMATION

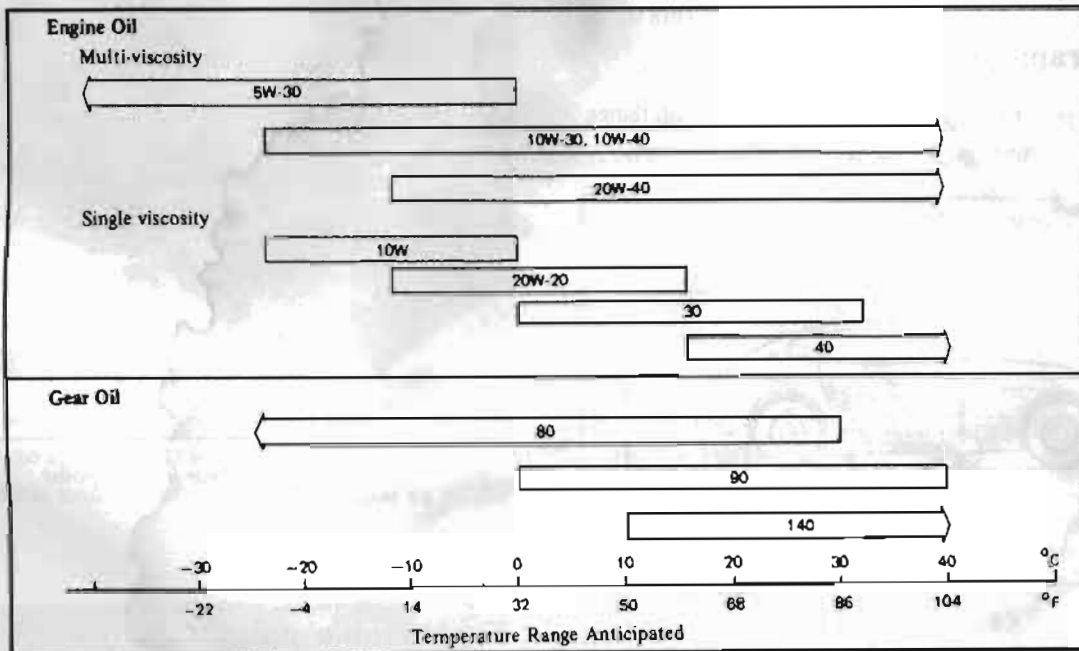
RECOMMENDED PETROL (FUEL)

Use a no-lead or low-lead gasoline with a minimum octane rating of 87 – the average of the Research and Motor Octane Numbers in the U.S. When the figure is

based on the Research Octane Number, use a gasoline with a minimum octane rating of 91 (RON) in Canada.

RECOMMENDED LUBRICANTS

RECOMMENDED SAE VISCOSITY NUMBER



LUBRICANT SPECIFICATION

Item	Specifications	Remarks
Gasoline engine oil	SAE Classification SD or SE	
Gear oil	Transmission and steering	API GL-4
	Differential	API GL-5
Automatic T/M fluid	Type DEXRON	
Multipurpose grease	NLGI 2	Lithium soap base
Brake and clutch fluid	DOT 3	
Antifreeze coolant	(Long Life Coolant)	

GENERAL INFORMATION

LIFTING POINTS AND TOWING

CONTENTS

JACK UP	GI-4	TOWING	GI-5
Pantograph jack	GI-4	Manual transmission model	GI-5
Garage jack	GI-4	Automatic transmission model	GI-5
Supportable point	GI-4		

JACK UP

Pantograph jack

Apply a jack to the indicated position where sill flange is cut for identification. Do not jack up other position.

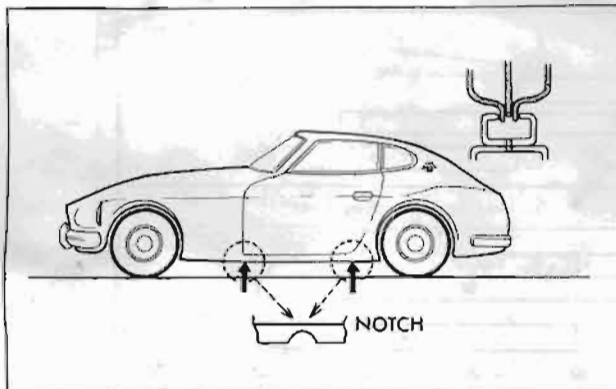


Fig. GI-5 Jacking point

Garage jack

The front jacking point is center of front suspension member and rear is differential gear carrier.

Do not apply a jack to center portion of front suspension transverse link.



Fig. GI-6 Front jacking point



Fig. GI-7 Rear jacking point

Supportable point

Front supportable points for stand are both front side members. Rear supportable points are both sides of front differential mounting cross member.

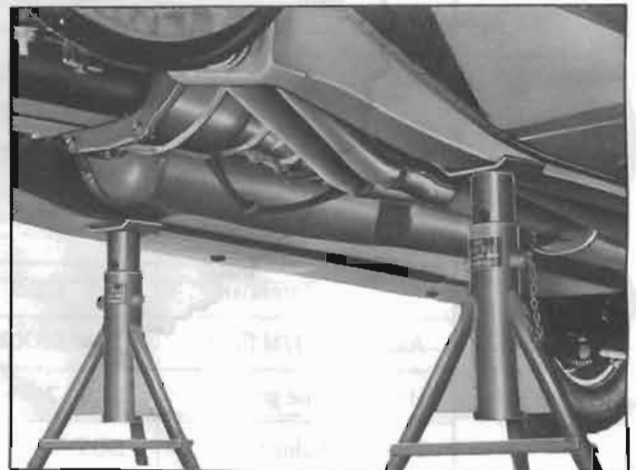


Fig. GI-8 Front supportable point

GENERAL INFORMATION

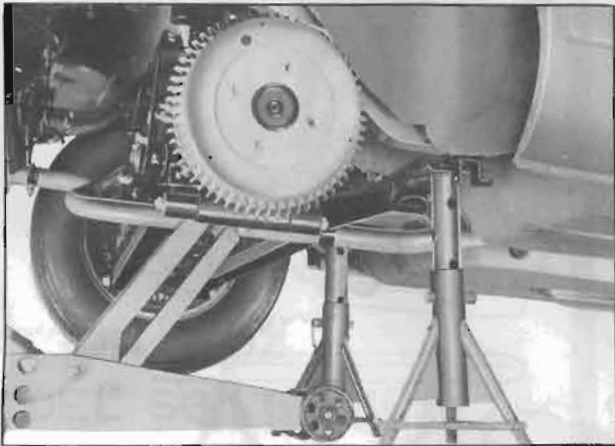


Fig. GI-9 Rear supportable point

TOWING

Manual transmission model

Tow forward at hook as shown in Figure GI-10. Do not tow at front suspension member or transverse link. Be careful not to apply impact load to the hook.

Admittable load of hook is less than 1,000 kg (2,205 lb).



Fig. GI-10 Front towing point

Automatic transmission model

The car may be towed safely on its rear wheels on the ground with the select lever in "N" (Neutral) position of at speeds of less than 18.8 MPH (30 km/h). However, the propeller shaft must be disconnected or the car must be towed on its front wheels in the ground under the following conditions:

1. Tow speed of more than 18.8 MPH (30 km/h).
2. Car must be towed for a long distance (over 6 miles or 10 km).
3. Transmission is not operating properly.

If car is towed on its front wheels on the ground, the steering wheel should be secured to maintain a straight ahead position.

TIE-DOWN

There are four tie-down hooks. Two of them are located on the front side members, and two others on the rear cross members. The one on the left front side member is also used as a towing hook.

Note: When fastening chains to the rear transverse link, wrap them around the link to avoid interfering with any adjacent parts.

GENERAL INFORMATION

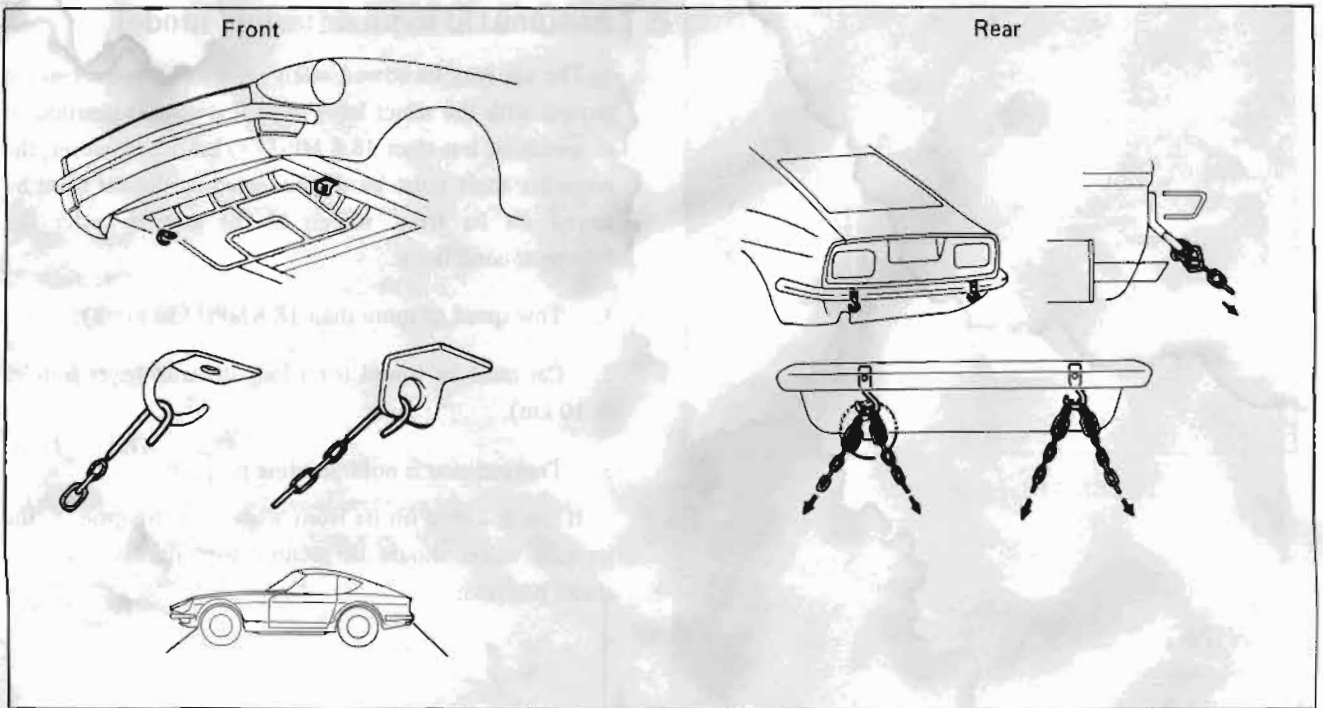


Fig. GI-11 Tie-down