

---

A

**ACC**

ACC

C

D

E

F

G

H

I

J

K

L

M

N

O

P

# SECTION **ACC**

## ACCELERATOR CONTROL SYSTEM

### CONTENTS

<b>SERVICE INFORMATION</b> .....	2	<b>ACCELERATOR CONTROL SYSTEM</b> .....	3
<b>PRECAUTIONS</b> .....	2	Removal and Installation .....	3
Precaution for Supplemental Restraint System (SRS) "AIR BAG" and "SEAT BELT PRE-TEN- SIONER" .....	2	<b>SERVICE DATA AND SPECIFICATIONS (SDS)</b> .....	4
Precaution for Battery Service .....	2	Tightening Torque .....	4

# PRECAUTIONS

< SERVICE INFORMATION >

## SERVICE INFORMATION

### PRECAUTIONS

#### Precaution for Supplemental Restraint System (SRS) "AIR BAG" and "SEAT BELT PRE-TENSIONER"

INFOID:000000004656770

The Supplemental Restraint System such as "AIR BAG" and "SEAT BELT PRE-TENSIONER", used along with a front seat belt, helps to reduce the risk or severity of injury to the driver and front passenger for certain types of collision. This system includes seat belt switch inputs and dual stage front air bag modules. The SRS system uses the seat belt switches to determine the front air bag deployment, and may only deploy one front air bag, depending on the severity of a collision and whether the front occupants are belted or unbelted. Information necessary to service the system safely is included in the "SUPPLEMENTAL RESTRAINT SYSTEM" and "SEAT BELTS" of this Service Manual.

#### **WARNING:**

- To avoid rendering the SRS inoperative, which could increase the risk of personal injury or death in the event of a collision which would result in air bag inflation, all maintenance must be performed by an authorized NISSAN/INFINITI dealer.
- Improper maintenance, including incorrect removal and installation of the SRS, can lead to personal injury caused by unintentional activation of the system. For removal of Spiral Cable and Air Bag Module, see the "SUPPLEMENTAL RESTRAINT SYSTEM".
- Do not use electrical test equipment on any circuit related to the SRS unless instructed to in this Service Manual. SRS wiring harnesses can be identified by yellow and/or orange harnesses or harness connectors.

#### PRECAUTIONS WHEN USING POWER TOOLS (AIR OR ELECTRIC) AND HAMMERS

#### **WARNING:**

- When working near the Air Bag Diagnosis Sensor Unit or other Air Bag System sensors with the ignition ON or engine running, DO NOT use air or electric power tools or strike near the sensor(s) with a hammer. Heavy vibration could activate the sensor(s) and deploy the air bag(s), possibly causing serious injury.
- When using air or electric power tools or hammers, always switch the ignition OFF, disconnect the battery, and wait at least 3 minutes before performing any service.

#### Precaution for Battery Service

INFOID:000000004656771

Before disconnecting the battery, lower both the driver and passenger windows. This will prevent any interference between the window edge and the vehicle when the door is opened/closed. During normal operation, the window slightly raises and lowers automatically to prevent any window to vehicle interference. The automatic window function will not work with the battery disconnected.

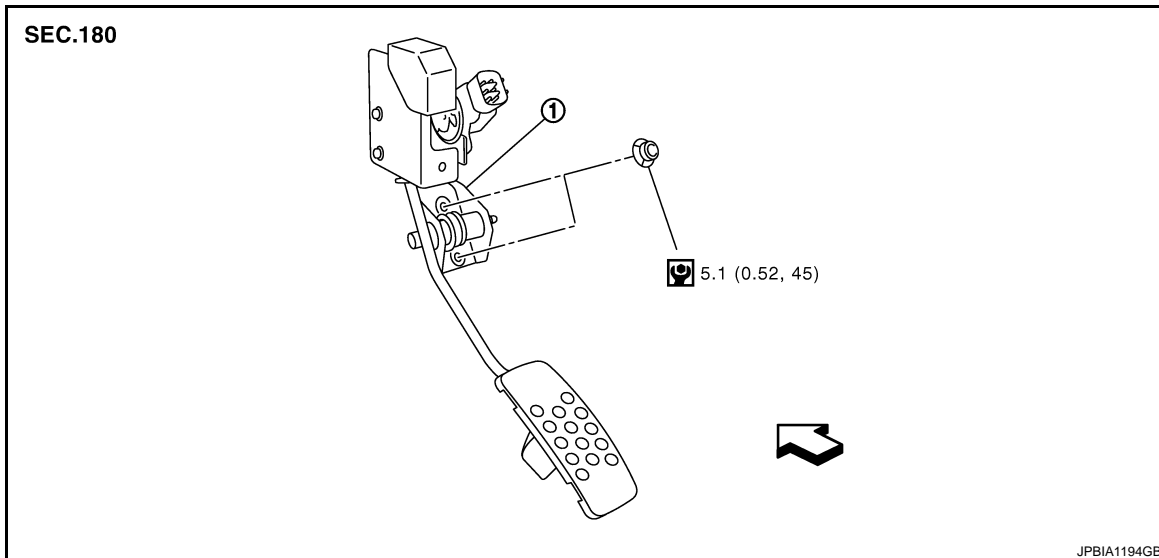
# ACCELERATOR CONTROL SYSTEM

< SERVICE INFORMATION >

## ACCELERATOR CONTROL SYSTEM

### Removal and Installation

INFOID:000000004656772



1. Accelerator pedal assembly

↶ : Vehicle front

- Refer to [GI-8. "Component"](#) for symbol marks in the figure.

#### REMOVAL

1. Disconnect accelerator pedal position sensor harness connector.
2. Loosen nuts, and remove accelerator pedal assembly.

#### CAUTION:

- **Never disassemble accelerator pedal assembly. Never remove accelerator pedal position sensor from accelerator pedal assembly.**
- **Avoid impact from dropping etc. during handling.**
- **Be careful to keep accelerator pedal assembly away from water.**

#### INSTALLATION

Installation is the reverse order of removal.

#### INSPECTION AFTER INSTALLATION

- Check that accelerator pedal moves smoothly within the whole operation range.
- Check that accelerator pedal securely returns to the original position.
- For the electrical inspection of accelerator pedal assembly, refer to [EC-586](#), [EC-593](#) and [EC-601](#).

#### CAUTION:

**When harness connector of accelerator pedal position sensor is disconnected, perform "Accelerator Pedal Released Position Learning". Refer to [EC-76. "Accelerator Pedal Released Position Learning"](#).**

# SERVICE DATA AND SPECIFICATIONS (SDS)

< SERVICE INFORMATION >

---

## SERVICE DATA AND SPECIFICATIONS (SDS)

### Tightening Torque

INFOID:000000004656773

Unit: N·m (kg-m, in-lb)

---

Accelerator pedal assembly	5.1 (0.52, 45)
----------------------------	----------------

---