

SECTION **RAX**  
REAR AXLE

A  
B  
C

RAX

CONTENTS

E

<b>SYMPTOM DIAGNOSIS</b> .....	2	<b>REAR WHEEL HUB</b> .....	5	F
<b>NOISE, VIBRATION AND HARSHNESS (NVH) TROUBLESHOOTING</b> .....	2	Inspection .....	5	
NVH Troubleshooting Chart .....	2	<b>REMOVAL AND INSTALLATION</b> .....	6	G
<b>PRECAUTION</b> .....	3	<b>REAR WHEEL HUB</b> .....	6	
<b>PRECAUTIONS</b> .....	3	Exploded View .....	6	H
Precautions for Removing of Battery Terminal .....	3	Removal and Installation .....	6	
<b>PREPARATION</b> .....	4	Inspection .....	6	
<b>PREPARATION</b> .....	4	<b>SERVICE DATA AND SPECIFICATIONS (SDS)</b> .....	7	I
Commercial Service Tool .....	4	<b>SERVICE DATA AND SPECIFICATIONS (SDS)</b> .....	7	J
<b>PERIODIC MAINTENANCE</b> .....	5	Wheel Bearing .....	7	

K

L

M

N

O

P

# NOISE, VIBRATION AND HARSHNESS (NVH) TROUBLESHOOTING

< SYMPTOM DIAGNOSIS >

## SYMPTOM DIAGNOSIS

### NOISE, VIBRATION AND HARSHNESS (NVH) TROUBLESHOOTING

#### NVH Troubleshooting Chart

INFOID:000000009948806

Use chart below to find the cause of the symptom. If necessary, repair or replace these parts.

Reference		RAX-6	—	RAX-5	NVH in RAX and RSU sections	NVH in WT section	NVH in WT section	NVH in BR section
Possible cause and SUSPECTED PARTS		Improper installation, looseness	Parts interference	Wheel bearing damage	REAR AXLE AND REAR SUSPENSION	TIRE	ROAD WHEEL	BRAKE
Symptom	REAR AXLE	Noise	x	x	x	x	x	x
		Shake	x	x	x	x	x	x
		Vibration	x	x	x	x		
		Shimmy	x	x		x	x	x
		Judder	x			x	x	x
		Poor quality ride or handling	x	x		x	x	x

x: Applicable

# PRECAUTIONS

< PRECAUTION >

## PRECAUTION

### PRECAUTIONS

#### Precautions for Removing of Battery Terminal

INFOID:0000000010078185

- When removing the 12V battery terminal, turn OFF the ignition switch and wait at least 30 seconds.

**NOTE:**

ECU may be active for several tens of seconds after the ignition switch is turned OFF. If the battery terminal is removed before ECU stops, then a DTC detection error or ECU data corruption may occur.

- For vehicles with the 2-batteries, be sure to connect the main battery and the sub battery before turning ON the ignition switch.

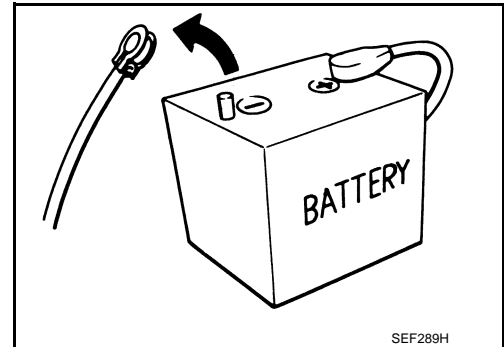
**NOTE:**

If the ignition switch is turned ON with any one of the terminals of main battery and sub battery disconnected, then DTC may be detected.

- After installing the 12V battery, always check "Self Diagnosis Result" of all ECUs and erase DTC.

**NOTE:**

The removal of 12V battery may cause a DTC detection error.



A

B

C

RAX

E

F

G

H

I

J

K

L

M

N

O

P

# PREPARATION

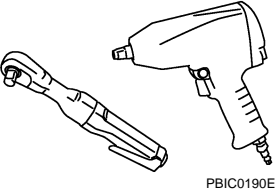
< PREPARATION >

## PREPARATION

### PREPARATION

#### Commercial Service Tool

INFOID:000000009948807

Tool name	Description
<p data-bbox="164 415 272 443">Power tool</p>  <p data-bbox="865 632 935 646">PBIC0190E</p>	<p data-bbox="1058 415 1312 443">Loosening bolts and nuts</p>

# REAR WHEEL HUB

< PERIODIC MAINTENANCE >

## PERIODIC MAINTENANCE

### REAR WHEEL HUB

#### Inspection

INFOID:000000009948808

#### COMPONENT PART

Check the mounting conditions (looseness, back lash) of each component and component conditions (wear, damage) are normal.

#### WHEEL HUB AND BEARING ASSEMBLY

Check the following items, and replace the part it necessary.

- Move wheel hub and bearing assembly in the axial direction by hand. Check there is no looseness of wheel bearing.

**Axial end play** : Refer to [RAX-7. "Wheel Bearing"](#).

- Rotate wheel hub and bearing assembly and check there is no unusual noise or other irregular conditions. If there is any of irregular conditions, replace wheel hub and bearing assembly.

A  
B  
C  
RAX  
E  
F  
G  
H  
I  
J  
K  
L  
M  
N  
O  
P

# REAR WHEEL HUB

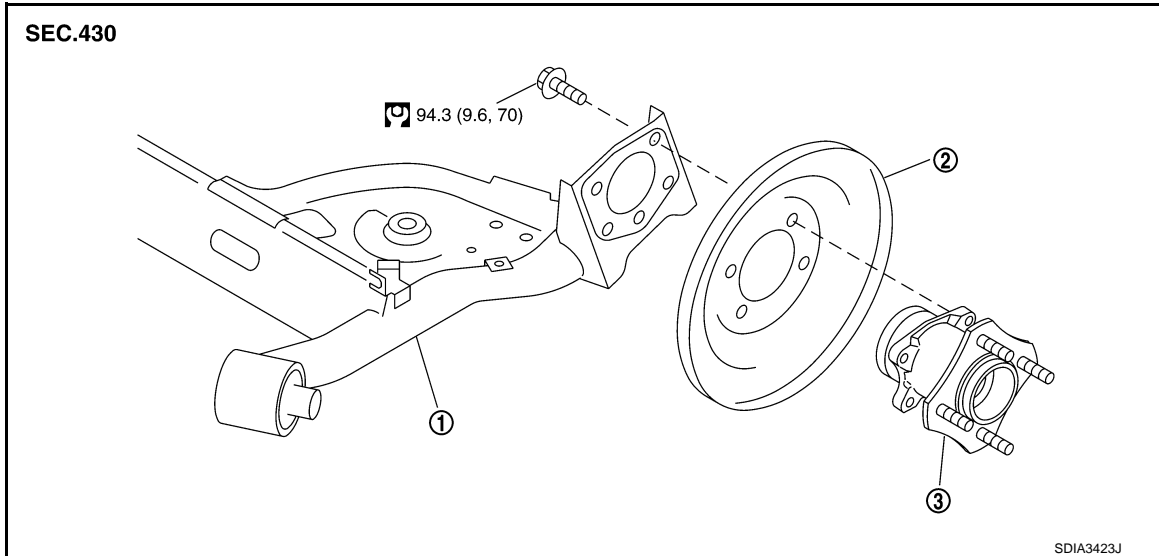
< REMOVAL AND INSTALLATION >

## REMOVAL AND INSTALLATION

### REAR WHEEL HUB

#### Exploded View

INFOID:000000009948809



1. Rear suspension beam

2. Back plate

3. Wheel hub and bearing assembly

Refer to [GI-4, "Components"](#) for symbols in the figure.

#### Removal and Installation

INFOID:000000009948810

##### REMOVAL

1. Remove tires with power tool. Refer to [WT-46, "Exploded View"](#).
2. Remove wheel sensor and sensor harness. Refer to [BRC-111, "REAR WHEEL SENSOR : Exploded View"](#).
3. Remove brake drum. Refer to [BR-39, "Exploded View"](#).  
**NOTE:**  
Keep back plate and brake assembly not falling down without removing them.
4. Remove wheel hub and bearing assembly.

##### INSTALLATION

Install in the reverse order of removal.

##### Inspection

INFOID:000000009948811

##### INSPECTION AFTER REMOVAL

Check the wheel hub and bearing assembly for wear, cracks, and damage. Replace if necessary.

##### INSPECTION AFTER INSTALLATION

1. Check wheel sensor harness for proper connection. Refer to [BRC-111, "REAR WHEEL SENSOR : Exploded View"](#).
2. Adjust parking brake operation (stroke). Refer to [PB-3, "Inspection and Adjustment"](#).
3. Check wheel alignment. Refer to [RSU-6, "Inspection"](#).
4. Adjust neutral position of steering angle sensor. Refer to [BRC-9, "Special Repair Requirement"](#).

# SERVICE DATA AND SPECIFICATIONS (SDS)

< SERVICE DATA AND SPECIFICATIONS (SDS)

## SERVICE DATA AND SPECIFICATIONS (SDS)

SERVICE DATA AND SPECIFICATIONS (SDS)

Wheel Bearing

INFOID:000000009948812

Item	Standard
Axial end play	0.05 mm (0.002 in) or less

A

B

C

RAX

E

F

G

H

I

J

K

L

M

N

O

P