

A
B
C

SECTION **PB**

PARKING BRAKE SYSTEM

CONTENTS

<p>PRECAUTION 2</p> <p>PRECAUTIONS 2</p> <p style="padding-left: 20px;">Precaution for Working Range at a Regular Dealership2</p> <p style="padding-left: 20px;">General Precautions2</p> <p>PREPARATION 3</p> <p>PREPARATION 3</p> <p style="padding-left: 20px;">Commercial Service Tool3</p> <p>PERIODIC MAINTENANCE 4</p> <p>PARKING BRAKE SYSTEM 4</p> <p style="padding-left: 20px;">Inspection and Adjustment4</p>	<p>REMOVAL AND INSTALLATION 6</p> <p>PARKING BRAKE SHOE 6</p> <p style="padding-left: 20px;">Exploded View 6</p> <p style="padding-left: 20px;">Inspection and Adjustment 6</p> <p>SERVICE DATA AND SPECIFICATIONS (SDS) 8</p> <p>SERVICE DATA AND SPECIFICATIONS (SDS) 8</p> <p style="padding-left: 20px;">Parking Drum Brake 8</p> <p style="padding-left: 20px;">Parking Brake Control 8</p>	<p style="background-color: black; color: white; padding: 2px;">PB</p> <p>G</p> <p>H</p> <p>I</p> <p>J</p> <p>K</p> <p>L</p> <p>M</p> <p>N</p> <p>O</p> <p>P</p>
---	--	--

PRECAUTIONS

< PRECAUTION >

PRECAUTION

PRECAUTIONS

Precaution for Working Range at a Regular Dealership

INFOID:000000009167682

CAUTION:

The service items unmentioned on this manual are recommended to be performed by a GT-R certified NISSAN dealer. Because those service items require special equipment and a GT-R certified technical staff who completed special training.

General Precautions

INFOID:000000009159888

CAUTION:

After finishing servicing, check that all the tools and waste are stored in a customary place.

PREPARATION

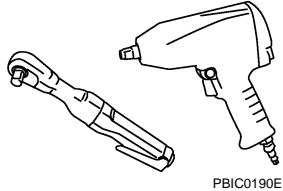
< PREPARATION >

PREPARATION

PREPARATION

Commercial Service Tool

INFOID:000000009159889

Tool name	Description
Power tool 	Loosening bolts and nuts

A

B

C

D

E

PB

G

H

I

J

K

L

M

N

O

P

PARKING BRAKE SYSTEM

< PERIODIC MAINTENANCE >

PERIODIC MAINTENANCE

PARKING BRAKE SYSTEM

Inspection and Adjustment

INFOID:000000009159890

INSPECTION

Parking Brake Lever Stroke

1. Operate the parking brake lever with a force of 196 N (20 kg, 44 lb). Check that the lever stroke is within the specified number of notches. (Check it by listening to the clicks of the ratchet.)

Number of notches : Refer to [PB-8, "Parking Brake Control"](#).

2. When brake warning lamp turns ON, check that the lever stroke is within the specified number of notches. (Check it by listening to the clicks of the ratchet.)

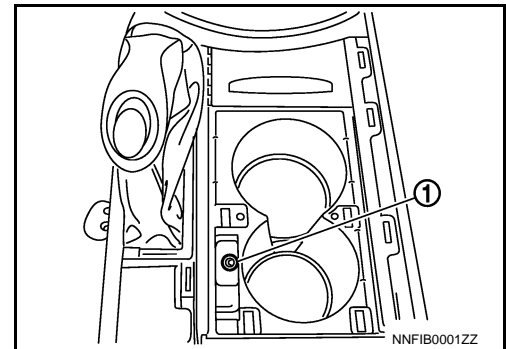
Number of notches : Refer to [PB-8, "Parking Brake Control"](#).

Inspect Components

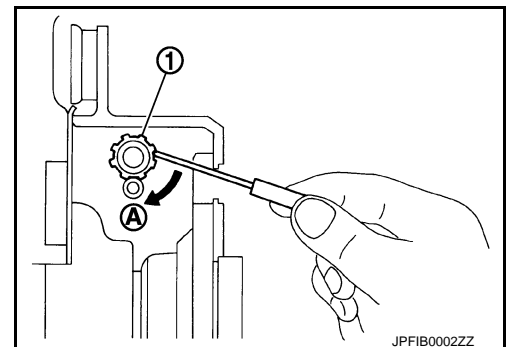
- Check each component for installation condition such as looseness.
- Check the parking brake lever assembly for bend, damage and cracks. Replace if necessary.
- Check the cables and equalizer for wear, damage and cracks. Replace if necessary.
- Check the parking brake switch, and replace it if necessary. (This work is recommended to be performed by GT-R certified NISSAN dealer.)

ADJUSTMENT

1. Remove tires with power tool. Refer to [WT-11, "Exploded View"](#).
2. Fix the disc rotor using wheel nuts.
3. Remove the instrument garnish. Refer to [IP-12, "Exploded View"](#).
4. Remove the console finisher assembly. Refer to [IP-23, "Exploded View"](#).
5. Remove the cup holder finisher. Refer to [IP-23, "Exploded View"](#).
6. Rotate the adjusting nut (1) and loosen the cable, and then return the parking brake lever.



7. Remove the adjusting hole plug from the disc rotor. Turn the adjuster (1) in the direction (A) as shown in the figure using a suitable tool until the disc rotor is locked.
8. Turn back the adjuster 5 or 6 notches from the locked position.
9. Rotate the disc rotor to check that there is no drag. Install the adjusting hole plug. If there is any drag, refer to [PB-6, "Inspection and Adjustment"](#).
10. Adjust the cable with the following procedure.
 - a. Operate the parking brake lever with a force of 294 N (30 kg, 66 lb) for 10 strokes or more.
 - b. Adjust the parking brake lever stroke by turning the adjusting nut.



CAUTION:

Never reuse the adjusting nut if the adjusting nut removed.

PARKING BRAKE SYSTEM

< PERIODIC MAINTENANCE >

- c. Operate the parking brake lever with a force of 196 N (20 kg, 44 lb). Check that the lever stroke is within the specified number of notches. (Check it by listening to the clicks of the ratchet.)

A

Number of notches : Refer to [PB-8, "Parking Brake Control"](#).

- d. Rotate the disc rotor with the parking brake lever released and check that there is no drag. Refer to [PB-6, "Inspection and Adjustment"](#).

B

C

D

E

PB

G

H

I

J

K

L

M

N

O

P

PARKING BRAKE SHOE

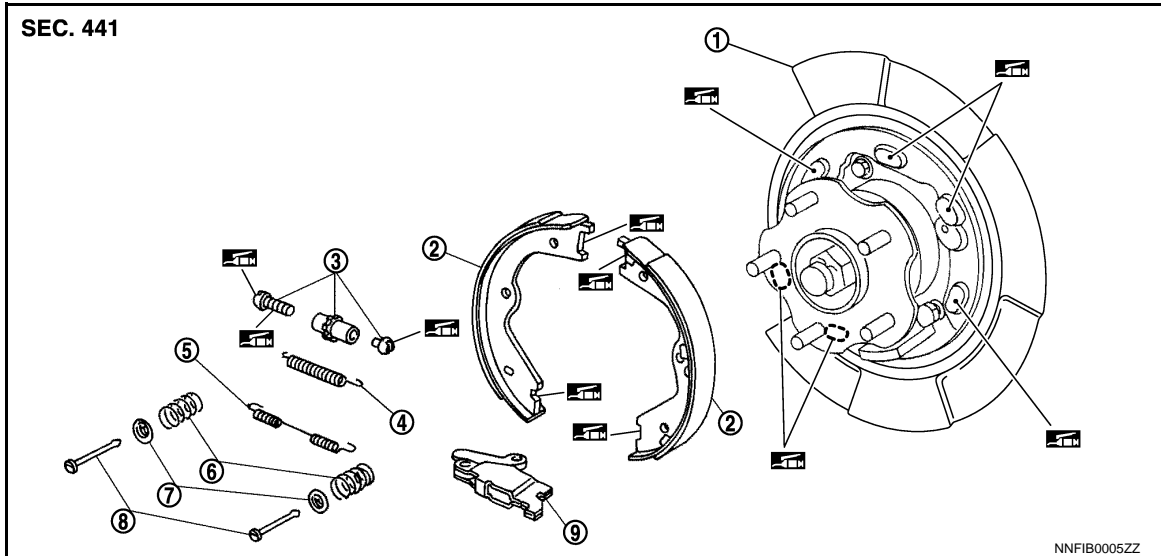
< REMOVAL AND INSTALLATION >

REMOVAL AND INSTALLATION

PARKING BRAKE SHOE

Exploded View

INFOID:000000009159895



- | | | |
|--------------------|-----------------------|-----------------------|
| 1. Back plate | 2. Parking brake shoe | 3. Adjuster |
| 4. Adjuster spring | 5. Return spring | 6. Anti-rattle spring |
| 7. Retainer | 8. Anti-rattle pin | 9. Toggle lever |

 Apply PBC (Poly Butyl Cuprysil) grease or silicone-based grease.

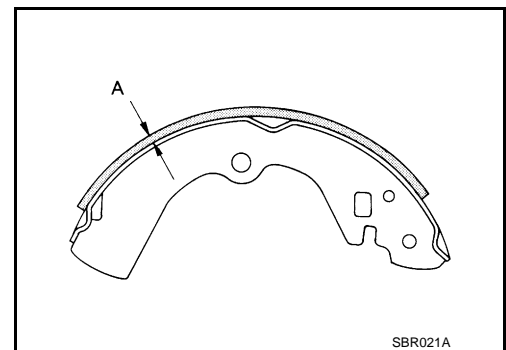
Inspection and Adjustment

INFOID:000000009159897

INSPECTION AFTER REMOVAL

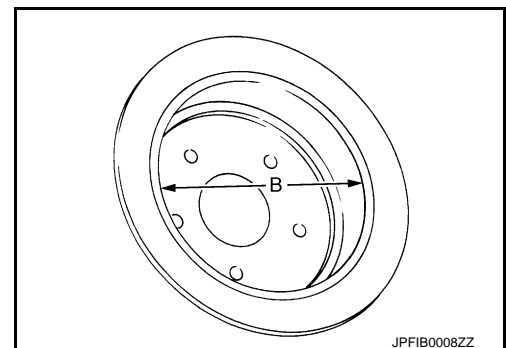
Lining Thickness Inspection
Check thickness (A) of lining.

A : Refer to [PB-8, "Parking Drum Brake"](#).



Drum Inner Diameter Inspection
Check inner diameter (B) of drum.

B : Refer to [PB-8, "Parking Drum Brake"](#).



PARKING BRAKE SHOE

< REMOVAL AND INSTALLATION >

Other Inspections

Check the following items, and replace the parts if necessary.

- Lining for excessive wear, damage or peeling. A
- Brake shoe sliding surface for excessive wear or damage.
- Anti-rattle pin and retainer for excessive wear, damage or rust. B
- Adjuster spring, return spring and anti-rattle spring for settling, excessive wear, damage or rust.
- Adjuster for smoothness.
- Toggle lever for excessive wear, damage or rust.
- Visually check inside of the drum for excessive wear, cracks or damage with a pair of vernier calipers. C

ADJUSTMENT AFTER INSTALLATION

Check the parking brake for drag. Perform the following procedure if necessary.

1. Adjust the parking brake lever stroke. Refer to [PB-4. "Inspection and Adjustment"](#). D
2. Check the parking brake for drag again. Check the rear disc brake for drag if necessary. (This work is recommended to be performed by GT-R certified NISSAN dealer.) E

PB

G

H

I

J

K

L

M

N

O

P

SERVICE DATA AND SPECIFICATIONS (SDS)

< SERVICE DATA AND SPECIFICATIONS (SDS)

SERVICE DATA AND SPECIFICATIONS (SDS)

SERVICE DATA AND SPECIFICATIONS (SDS)

Parking Drum Brake

INFOID:000000009159898

Unit: mm (in.)

Item	Limit
Brake lining	1.5 (0.059)
Drum (disc of inner diameter)	191 (7.52)

Parking Brake Control

INFOID:000000009159899

Item	Standard
Number of notches [under force of 196 N (20 kg, 44 lb)]	5 – 6 notches
Number of notches when brake warning lamp turns ON	1 notch