

SECTION **RAX**
REAR AXLE

A
B
C

RAX

CONTENTS

E

SYMPTOM DIAGNOSIS	2	General Precautions	3	F
NOISE, VIBRATION AND HARSHNESS (NVH) TROUBLESHOOTING	2	PERIODIC MAINTENANCE	4	
NVH Troubleshooting Chart	2	REAR WHEEL HUB AND HOUSING	4	G
PRECAUTION	3	Inspection	4	
PRECAUTIONS	3	REAR DRIVE SHAFT	5	H
Precaution for Working Range at a Regular Dealership	3	Inspection	5	
Precaution for Supplemental Restraint System (SRS) "AIR BAG" and "SEAT BELT PRE-TENSIONER"	3	REMOVAL AND INSTALLATION	6	I
		REAR WHEEL HUB AND HOUSING	6	
		Exploded View	6	J

J

K

L

M

N

O

P

NOISE, VIBRATION AND HARSHNESS (NVH) TROUBLESHOOTING

< SYMPTOM DIAGNOSIS >

SYMPTOM DIAGNOSIS

NOISE, VIBRATION AND HARSHNESS (NVH) TROUBLESHOOTING

NVH Troubleshooting Chart

INFOID:000000009163173

Use chart below to find the cause of the symptom. If necessary, repair or replace these parts.

Symptom			Possible cause and SUSPECTED PARTS													Reference						
			Excessive joint angle	Joint sliding resistance	Imbalance	Improper installation, looseness	Parts interference	PROPELLER SHAFT	DIFFERENTIAL	REAR AXLE AND REAR SUSPENSION	REAR AXLE	TIRE	ROAD WHEEL	DRIVE SHAFT	BRAKE		STEERING					
DRIVE SHAFT	Noise		x	x					x	x	x	x	x	x	x			—	This work is recommended to be performed by GT-R certified NISSAN dealer.			
	Shake		x		x				x	x	x	x	x		x	x				This work is recommended to be performed by GT-R certified NISSAN dealer.		
REAR AXLE	Noise				x	x	x	x	x		x	x	x	x	x	x			This work is recommended to be performed by GT-R certified NISSAN dealer.			
	Shake				x	x	x		x		x	x	x	x	x			N/VH in DLN section.				
	Vibration				x	x	x		x		x		x							N/VH in DLN section.		
	Shimmy				x	x			x		x	x		x	x						N/VH in RAX and RSU sections.	
	Judder				x				x		x	x		x	x							Refer to REAR AXLE in this chart.
	Poor quality ride or handling				x	x			x		x	x										

x: Applicable

PRECAUTIONS

< PRECAUTION >

PRECAUTION

PRECAUTIONS

Precaution for Working Range at a Regular Dealership

INFOID:000000009188290

CAUTION:

The service items unmentioned on this manual are recommended to be performed by a GT-R certified NISSAN dealer. Because those service items require special equipment and a GT-R certified technical staff who completed special training.

Precaution for Supplemental Restraint System (SRS) "AIR BAG" and "SEAT BELT PRE-TENSIONER"

INFOID:000000009163174

The Supplemental Restraint System such as "AIR BAG" and "SEAT BELT PRE-TENSIONER", used along with a front seat belt, helps to reduce the risk or severity of injury to the driver and front passenger for certain types of collision. This system includes seat belt switch inputs and dual stage front air bag modules. The SRS system uses the seat belt switches to determine the front air bag deployment, and may only deploy one front air bag, depending on the severity of a collision and whether the front occupants are belted or unbelted. Information necessary to service the system safely is included in the "SRS AIR BAG" and "SEAT BELT" of this Service Manual.

WARNING:

Always observe the following items for preventing accidental activation.

- To avoid rendering the SRS inoperative, which could increase the risk of personal injury or death in the event of a collision that would result in air bag inflation, all maintenance must be performed by an authorized NISSAN/INFINITI dealer.
- Improper maintenance, including incorrect removal and installation of the SRS, can lead to personal injury caused by unintentional activation of the system. For removal of Spiral Cable and Air Bag Module, see "SRS AIR BAG".
- Never use electrical test equipment on any circuit related to the SRS unless instructed to in this Service Manual. SRS wiring harnesses can be identified by yellow and/or orange harnesses or harness connectors.

PRECAUTIONS WHEN USING POWER TOOLS (AIR OR ELECTRIC) AND HAMMERS

WARNING:

Always observe the following items for preventing accidental activation.

- When working near the Air Bag Diagnosis Sensor Unit or other Air Bag System sensors with the ignition ON or engine running, never use air or electric power tools or strike near the sensor(s) with a hammer. Heavy vibration could activate the sensor(s) and deploy the air bag(s), possibly causing serious injury.
- When using air or electric power tools or hammers, always switch the ignition OFF, disconnect the battery, and wait at least 3 minutes before performing any service.

General Precautions

INFOID:000000009163175

CAUTION:

After finishing servicing, check that all the tools and waste are stored in a customary place.

A
B
C
RAX
E
F
G
H
I
J
K
L
M
N
O
P

REAR WHEEL HUB AND HOUSING

< PERIODIC MAINTENANCE >

PERIODIC MAINTENANCE

REAR WHEEL HUB AND HOUSING

Inspection

INFOID:000000009163180

MOUNTING INSPECTION

Check the mounting conditions (looseness, back lash) of each component and component conditions (wear, damage) are normal.

WHEEL BEARING INSPECTION

- Move wheel hub and bearing assembly in the axial direction by hand. Check there is no looseness of wheel bearing.

Axial end play : 0.05 mm (0.002 in) or less

- Rotate wheel hub, and check that is no unusual noise or other irregular conditions. If there is any of abnormal conditions, replace wheel hub and bearing assembly.

REAR DRIVE SHAFT

< PERIODIC MAINTENANCE >

REAR DRIVE SHAFT

Inspection

INFOID:000000009163181

- Check drive shaft mounting point and joint for looseness and other damage.
- Check boot for cracks and other damage.

CAUTION:

Replace entire drive shaft assembly when noise or vibration occurs from drive shaft.

A

B

C

RAX

E

F

G

H

I

J

K

L

M

N

O

P

REAR WHEEL HUB AND HOUSING

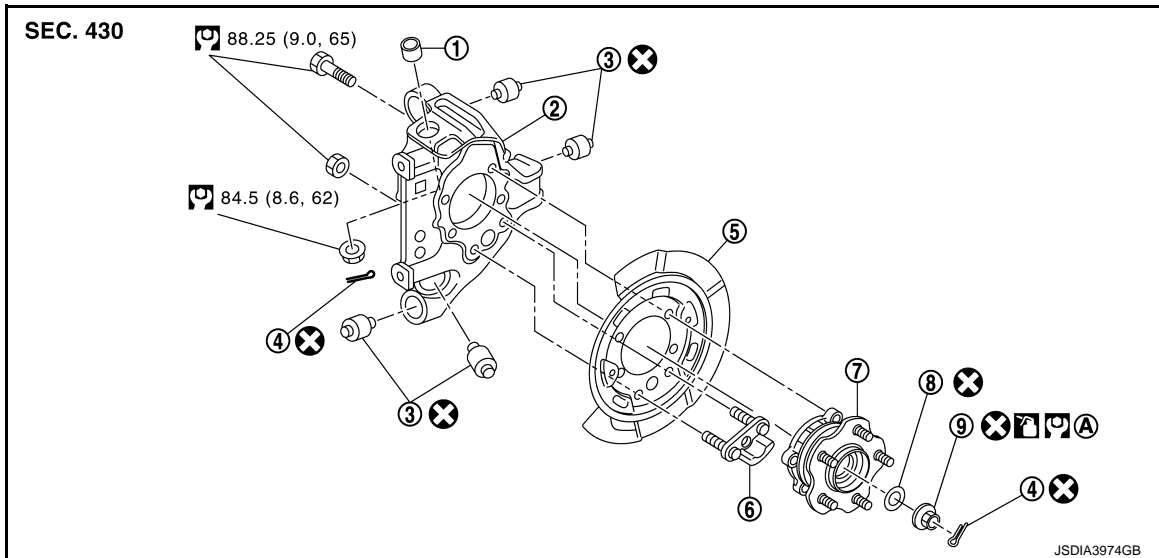
< REMOVAL AND INSTALLATION >

REMOVAL AND INSTALLATION


REAR WHEEL HUB AND HOUSING

Exploded View

INFOID:000000009163182



- | | | |
|-----------------------------------|------------------|-----------------------|
| 1. Ball seat | 2. Axle housing | 3. Bushing |
| 4. Cotter pin | 5. Back plate | 6. Anchor block |
| 7. Wheel hub and bearing assembly | 8. Spring washer | 9. Wheel hub lock nut |
- A. When tightening wheel hub lock nut, tighten the lock nut to 225 N·m (23 kg·m, 166 ft·lb), loosen it, and retighten it to 350 N·m (36 kg·m, 258 ft·lb) to break in spring washer and the contact surface of wheel hub assembly.

: Apply anti-corrosion oil.

Refer to [GI-4. "Components"](#) for the symbols in the figure.