

A
EX
C
D
E
F
G
H
I
J
K
L
M
N
O
P

SECTION EX

EXHAUST SYSTEM

CONTENTS

STAINLESS STEEL MUFFLER	
PRECAUTION	2
PRECAUTIONS	2
Aluminum Die-Casting Parts Handling	2
Precautions for Removing Battery Terminal	2
BASIC INSPECTION	4
EXHAUST PIPE AND MUFFLER	4
Inspection and Adjustment (GT-R certified NISSAN dealer)	4
PERIODIC MAINTENANCE	6
EXHAUST SYSTEM	6
Inspection (GT-R certified NISSAN dealer)	6
REMOVAL AND INSTALLATION	7
EXHAUST SYSTEM	7
Exploded View	7
Removal and Installation (GT-R certified NISSAN dealer)	7
Inspection (GT-R certified NISSAN dealer)	8
TITANIUM MUFFLER	
PRECAUTION	10
PRECAUTIONS	10
Precautions for Removing Battery Terminal	10
Aluminum Die-Casting Parts Handling	10
Titanium Muffler Handling	11
PERIODIC MAINTENANCE	12
EXHAUST SYSTEM	12
Inspection (GT-R certified NISSAN dealer)	12
SUB MUFFLER	13
Inspection (GT-R certified NISSAN dealer)	13
REMOVAL AND INSTALLATION	14
EXHAUST SYSTEM	14
Exploded View	14
Removal and Installation (GT-R certified NISSAN dealer)	14
Inspection (GT-R certified NISSAN dealer)	15

PRECAUTION

PRECAUTIONS

Aluminum Die-Casting Parts Handling

INFOID:000000011485568

PROHIBITION OF WELDING OR BEATING REPAIR

- Material made of aluminum die-casting parts is heat-treated and loses strength when being exposed to welding heat. Do not perform welding repair for cracks, damage or others.
- For aluminum die-casting parts deformation, do not perform repair by beating. Always repair by replacement as an assembly.

CRACK CHECK

When the vehicle is damaged, always perform a visual deformation check and a crack check.

Crack Check Procedures

For a crack check, use dye penetrant inspection fluid (pre-cleaning fluid, penetrant fluid and developer fluid).

CAUTION:

Always perform a crack check in accordance with the procedures specified by the manufacturer of the dye penetrant inspection fluid.

1. Spray pre-cleaning fluid on the checking surface for cleaning.
2. Spray penetrant fluid on the checking surface and wait until the penetrant fluid soaks into any cracks.
3. Wipe off excessive penetrant fluid, and then also lightly wipe off penetrant fluid using a wet cloth.
4. Spray developer fluid on the checking surface.
5. Cracks, if any, are dyed red in color.

STRAY CURRENT CORROSION

- Corrosion occurs to aluminum die-casting parts by the stray current corrosion phenomenon, when directly contacting other parts made of steel. Always apply anti-stray current corrosion paint (primer) on the mounting surface.
- Clean mounting surface to prevent any foreign matter, steel powder or others from being mixed in. Always apply the specified adhesive when installing.
- Corrosion by stray current corrosion may occur when installing with any other bolts than the specified bolt. Always use the specified bolt that is surface treated.
- When loosening the specified bolt that is tightened, the treated surface may peel. Never reuse the specified bolt that is tightened once.

TIGHTENING TORQUE CONTROL

Material made of aluminum die-casting parts is soft in term of hardness. Tightening torque must be controlled exactly as specified. Always use a torque wrench to install any part to the specified tightening torque.

WARNING:

Never use a power tool to remove or tighten bolts for aluminum die-casting part to prevent damage to aluminum die-casting parts.

Precautions for Removing Battery Terminal

INFOID:000000011485569

- When removing the 12V battery terminal, turn OFF the ignition switch and wait at least 30 seconds.

NOTE:

ECU may be active for several tens of seconds after the ignition switch is turned OFF. If the battery terminal is removed before ECU stops, then a DTC detection error or ECU data corruption may occur.

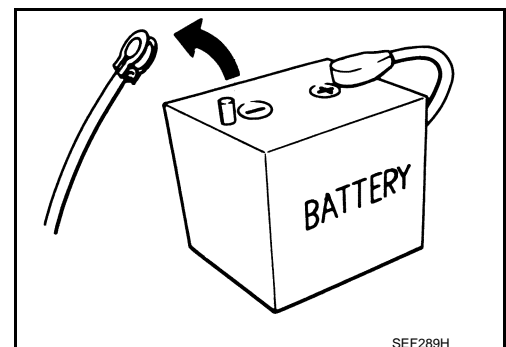
- For vehicles with the 2-batteries, be sure to connect the main battery and the sub battery before turning ON the ignition switch.

NOTE:

If the ignition switch is turned ON with any one of the terminals of main battery and sub battery disconnected, then DTC may be detected.

- After installing the 12V battery, always check "Self Diagnosis Result" of all ECUs and erase DTC.

NOTE:



PRECAUTIONS

< PRECAUTION >

[STAINLESS STEEL MUFFLER]

The removal of 12V battery may cause a DTC detection error.

A

EX

C

D

E

F

G

H

I

J

K

L

M

N

O

P

BASIC INSPECTION

EXHAUST PIPE AND MUFFLER

Inspection and Adjustment (GT-R certified NISSAN dealer)

INFOID:000000011485570

CAUTION:

- When performing a high performance driving, check the clearance of finisher and rear bumper, if necessary.
- Check rear bumper clearance before performing a clearance check / adjustment of finisher and the rear bumper. Refer to [EXT-22, "Removal and Installation"](#).

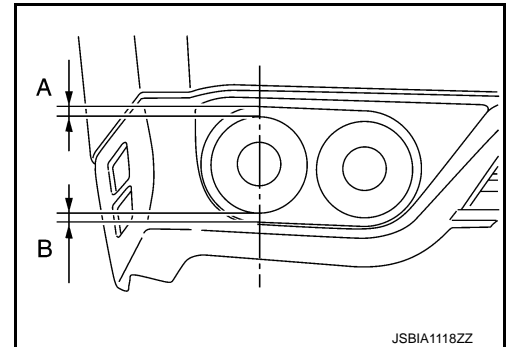
1. CLEARANCE CHECK OF FINISHER AND REAR BUMPER (VERTICAL DIRECTION)

Measure the clearance of finisher and the rear bumper as shown in the figure.

NOTE:

The figure shows an example of left side finisher. (Right side is symmetric.)

	Standard	Limit
A:	10.9 mm (0.429 inch)	6 mm (0.24 in) or more
B:	10.4 mm (0.409 inch)	6 mm (0.24 in) or more



Measurement result

- “Limit” or more>>GO TO 2.
- Less than “Limit”>>GO TO 3.

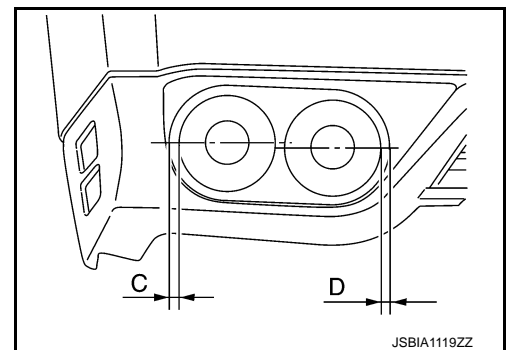
2. CLEARANCE CHECK OF FINISHER AND REAR BUMPER (LATERAL DIRECTION)

Measure the clearance of finisher and the rear bumper as shown in the figure.

NOTE:

The figure shows an example of left side finisher. (Right side is symmetric.)

	Standard	Limit
C:	10.4 mm (0.409 inch)	5 mm (0.20 in) or more
D:	10.3 mm (0.406 inch)	5 mm (0.20 in) or more



Measurement result

- “Limit” or more>>INSPECTION END
- Less than “Limit”>>GO TO 4.

3. MAIN MUFFLER ASSEMBLY INSTALLATION ADJUSTMENT (VERTICAL DIRECTION)

1. Apply protective tape to rear bumper guards to protect them from damage.
2. Remove rear diffuser (center). Refer to [EXT-44, "REAR DIFFUSER : Exploded View"](#).
3. Adjust the mounting bracket with the following procedure.

NOTE:

EXHAUST PIPE AND MUFFLER

[STAINLESS STEEL MUFFLER]

< BASIC INSPECTION >

When removing mounting bracket, support the main muffler assembly using a transmission jack.

Upward Adjustment (if clearance "B" is less than "Limit")

1. Loosen the mounting bracket No.4 installation bolts (A).
2. Move the mounting bracket No.4 (1) upward and adjust it to make the clearance above lower limit. Then temporarily tighten the bolts.
3. Confirm the clearance "B"

NOTE:

If clearance does not become within the range of the limit, perform step 2 again.

4. Tighten the mounting bracket No.4 installation bolts.



: 22.0 N·m (2.2 kg-m)

Downward Adjustment (if clearance "A" is less than "Limit")

1. Remove the mounting bracket No.4 installation nuts (A).
2. Add a piece of spacer (2). Then temporarily tighten the nuts.

CAUTION:

Add the spacer one by one, put same number of spacers to left and right sides. (two pieces maximum)

3. Confirm the clearance "A"

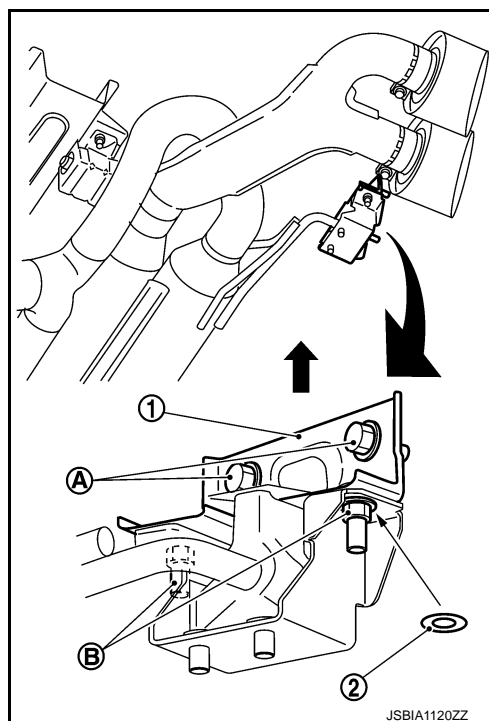
NOTE:

If clearance does not become within the range of the limit, perform step 2 again.

4. Tighten the mounting bracket No.4 installation nuts.



: 14.2 N·m (1.4 kg-m)



A

EX

C

D

E

F

G

H

I

J

K

L

M

N

O

P

Measure the clearance again.>>GO TO 1.

4.MAIN MUFFLER ASSEMBLY INSTALLATION ADJUSTMENT (LATERAL DIRECTION)

1. Apply protective tape to rear bumper guards to protect them from damage.
2. Remove rear diffuser (center). Refer to [EXT-44, "REAR DIFFUSER : Exploded View"](#).
3. Remove mounting bracket No.3 and mounting bracket No.4, and re-install them moving main muffler assembly to the direction where the clearance can be kept. Refer to [EX-7, "Removal and Installation \(GT-R certified NISSAN dealer\)"](#).

NOTE:

When removing mounting bracket, support the main muffler assembly using a transmission jack.

Measure the clearance again.>>GO TO 1.

PERIODIC MAINTENANCE

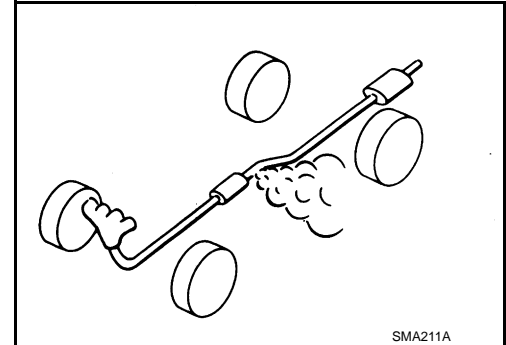
EXHAUST SYSTEM

Inspection (GT-R certified NISSAN dealer)

INFOID:00000001148571

Check exhaust pipes, muffler, and mounting for improper attachment, leakage, cracks, damage or deterioration.

- If anything is found, repair or replace damaged parts.



SMA211A

EXHAUST SYSTEM

< REMOVAL AND INSTALLATION >

[STAINLESS STEEL MUFFLER]

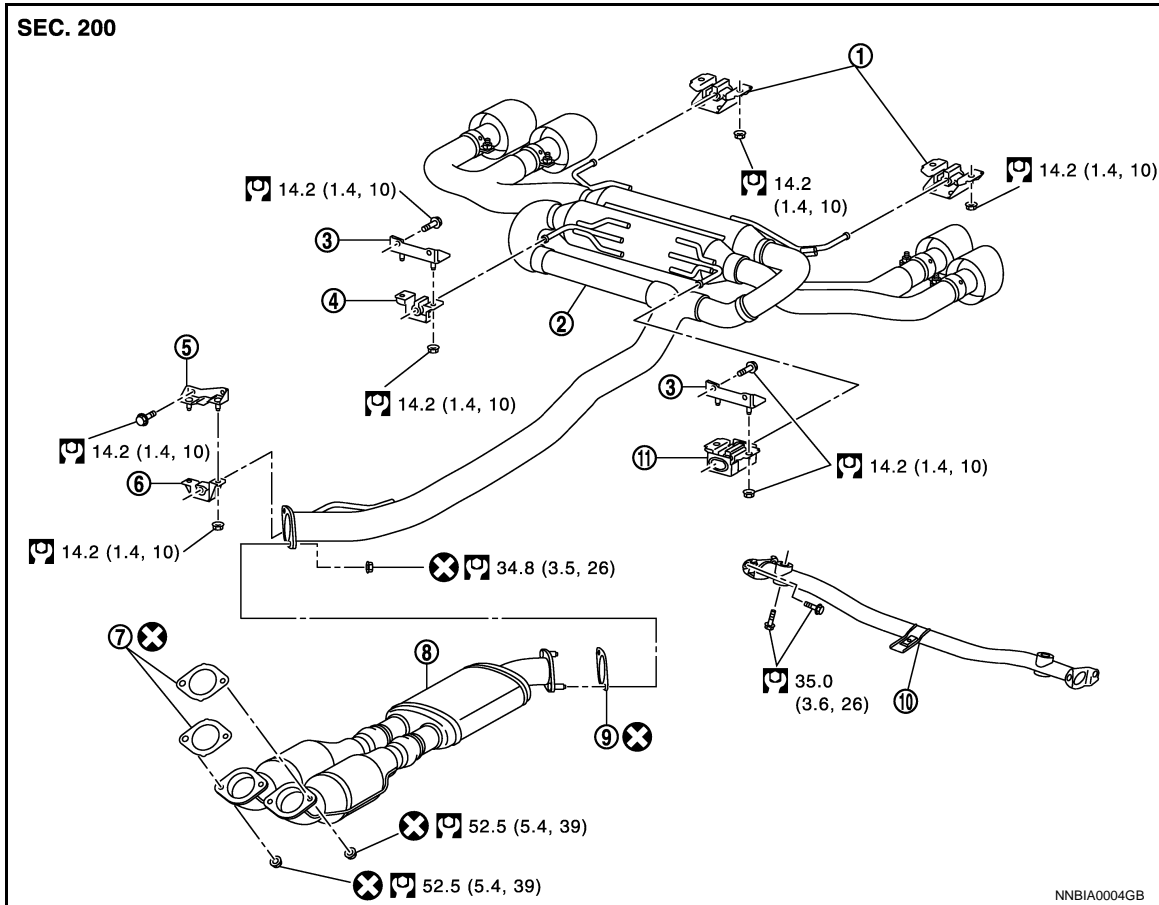
REMOVAL AND INSTALLATION

EXHAUST SYSTEM

Exploded View

INFOID:0000000011485572

A
EX



- | | | |
|----------------------------------|-----------------------------------|-----------------------------|
| 1. Mounting bracket (No. 4) | 2. Main muffler assembly | 3. Bracket |
| 4. Mounting bracket (No. 3) (RH) | 5. Bracket | 6. Mounting bracket (No. 2) |
| 7. Gasket | 8. Sub muffler | 9. Gasket |
| 10. Front cross bar assembly | 11. Mounting bracket (No. 3) (LH) | |

Refer to [GI-4, "Components"](#) for symbols in the figure.

Removal and Installation (GT-R certified NISSAN dealer)

INFOID:0000000011485573

CAUTION:

- Be sure to use genuine exhaust system parts or equivalents which are specially designed for heat resistance, corrosion resistance, and shape.
- Perform the operation with the exhaust system fully cooled down because the system is hot just after engine stops.
- Be careful not to cut hand on the heat insulator edge.
- Never disassemble main muffler assembly.

REMOVAL

1. Remove rear diffuser. Refer to [EXT-44, "REAR DIFFUSER : Exploded View"](#).
2. Remove front diffuser. Refer to [EXT-43, "FRONT DIFFUSER : Exploded View"](#).
3. Remove rear bumper. Refer to [EXT-21, "Exploded View"](#).
4. Remove front cross bar assembly.
5. Remove the nuts fixing main muffler assembly and sub muffler.

C
D
E
F
G
H
I
J
K
L
M
N
O
P

EXHAUST SYSTEM

< REMOVAL AND INSTALLATION >

[STAINLESS STEEL MUFFLER]

6. Remove the nuts fixing sub muffler and catalyst.
7. Remove sub muffler.
8. Remove the nuts from each mounting bracket.
9. Remove main muffler assembly.

CAUTION:

Be careful not to bump main muffler assembly against its surrounding parts.

INSTALLATION

CAUTION:

- Always replace exhaust tube gaskets with new ones when reassembling.
- If heat insulator is badly deformed, repair or replace it. If deposits such as mud pile up on the heat insulator, remove them.
- Remove deposits from the sealing surface of each connection. Connect them securely to avoid gases leakage.
- Temporarily tighten mounting bolts and nuts. Check each part for unusual interference, and then tighten them to the specified torque.
- When installing each mounting bracket, avoid twisting or unusual extension in up/down and right/left directions.

1. Install mounting brackets to main muffler assembly, checking the front mark of mounting brackets.
2. Install main muffler assembly.

CAUTION:

Be careful not to bump main muffler assembly against its surrounding parts (rear suspension member etc.).

3. Temporarily tighten the nuts of each mounting brackets.
4. Install sub muffler, and then temporarily tighten the nuts fixing main muffler assembly and sub muffler.
5. Temporarily tighten the nuts fixing sub muffler and catalyst.
6. Tighten the nuts mounting bracket (No. 4) to the specified torque.
7. Tighten the nuts mounting bracket (No. 3) to the specified torque.
8. Tighten the nuts mounting bracket (No. 2) to the specified torque.
9. Tighten the nuts fixing main muffler assembly and sub muffler to the specified torque.
10. Tighten the nuts fixing sub muffler and catalyst to the specified torque.
11. Install all the remaining parts in the reverse order of removal.

Inspection (GT-R certified NISSAN dealer)

INFOID:000000011485574

INSPECTION AFTER REMOVAL

EXHAUST SYSTEM

< REMOVAL AND INSTALLATION >

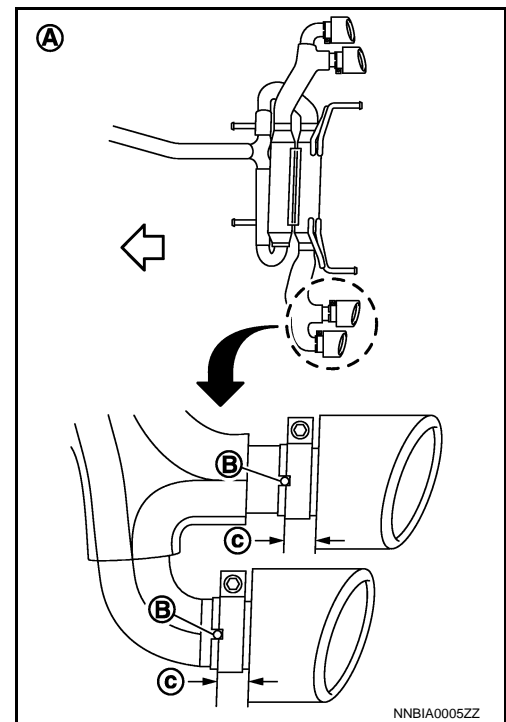
[STAINLESS STEEL MUFFLER]

- Check that the muffler finisher installation position, referring to the figure.

- A : Under view
- B : Protrusion (main muffler assembly side)
- c : 28 mm (1.10 in)
- ⇐ : Vehicle front

CAUTION:

Be sure to correct the installation position if it is different from the position shown in the figure.



INSPECTION AFTER INSTALLATION

- Check that clearance between muffler finisher and rear bumper is even. Refer to [EX-4. "Inspection and Adjustment \(GT-R certified NISSAN dealer\)"](#).
- With engine running, check exhaust tube joints for gas leakage and unusual noise.
- Check to ensure that mounting brackets are installed properly and free from undue stress. Improper installation may result in excessive noise and vibration.

< PRECAUTION >

PRECAUTION

PRECAUTIONS

Precautions for Removing Battery Terminal

INFOID:00000001148575

- When removing the 12V battery terminal, turn OFF the ignition switch and wait at least 30 seconds.

NOTE:

ECU may be active for several tens of seconds after the ignition switch is turned OFF. If the battery terminal is removed before ECU stops, then a DTC detection error or ECU data corruption may occur.

- For vehicles with the 2-batteries, be sure to connect the main battery and the sub battery before turning ON the ignition switch.

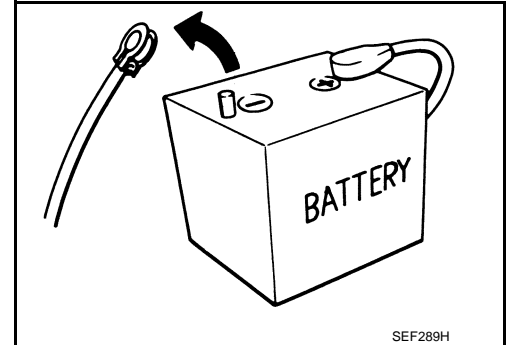
NOTE:

If the ignition switch is turned ON with any one of the terminals of main battery and sub battery disconnected, then DTC may be detected.

- After installing the 12V battery, always check "Self Diagnosis Result" of all ECUs and erase DTC.

NOTE:

The removal of 12V battery may cause a DTC detection error.



Aluminum Die-Casting Parts Handling

INFOID:00000001148576

PROHIBITION OF WELDING OR BEATING REPAIR

- Material made of aluminum die-casting parts is heat-treated and loses strength when being exposed to welding heat. Do not perform welding repair for cracks, damage or others.
- For aluminum die-casting parts deformation, do not perform repair by beating. Always repair by replacement as an assembly.

CRACK CHECK

When the vehicle is damaged, always perform a visual deformation check and a crack check.

Crack Check Procedures

For a crack check, use dye penetrant inspection fluid (pre-cleaning fluid, penetrant fluid and developer fluid).

CAUTION:

Always perform a crack check in accordance with the procedures specified by the manufacturer of the dye penetrant inspection fluid.

- Spray pre-cleaning fluid on the checking surface for cleaning.
- Spray penetrant fluid on the checking surface and wait until the penetrant fluid soaks into any cracks.
- Wipe off excessive penetrant fluid, and then also lightly wipe off penetrant fluid using a wet cloth.
- Spray developer fluid on the checking surface.
- Cracks, if any, are dyed red in color.

STRAY CURRENT CORROSION

- Corrosion occurs to aluminum die-casting parts by the stray current corrosion phenomenon, when directly contacting other parts made of steel. Always apply anti-stray current corrosion paint (primer) on the mounting surface.
- Clean mounting surface to prevent any foreign matter, steel powder or others from being mixed in. Always apply the specified adhesive when installing.
- Corrosion by stray current corrosion may occur when installing with any other bolts than the specified bolt. Always use the specified bolt that is surface treated.
- When loosening the specified bolt that is tightened, the treated surface may peel. Never reuse the specified bolt that is tightened once.

TIGHTENING TORQUE CONTROL

Material made of aluminum die-casting parts is soft in term of hardness. Tightening torque must be controlled exactly as specified. Always use a torque wrench to install any part to the specified tightening torque.

WARNING:

PRECAUTIONS

< PRECAUTION >

[TITANIUM MUFFLER]

Never use a power tool to remove or tighten bolts for aluminum die-casting part to prevent damage to aluminum die-casting parts.

A

Titanium Muffler Handling

INFOID:000000011485577

CAUTION:

- Never touch the titanium muffler directly with bare hands or allow oils to adhere to it during inspection, removal, and installation.
- Always wear new thick cotton gloves or working gloves. (Never use oil-adhered gloves.)
- After oil adhesion, wait until the titanium muffler cools and immediately remove oil with parts cleaner.
- Always use genuine parts cleaner (dry type) or the equivalent.
- When cleaning oil in on-board condition, apply parts cleaner to a waste to wipe out oil. By doing so, peripheral parts can be protected from parts cleaner adhesion.
- Be careful not to cut fingers with the insulator edge or the main muffler cooling fin.

EX

C

D

E

F

G

H

I

J

K

L

M

N

O

P

PERIODIC MAINTENANCE

EXHAUST SYSTEM

Inspection (GT-R certified NISSAN dealer)

INFOID:000000011485578

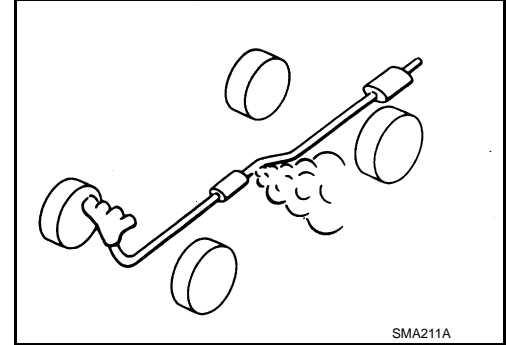
CHECKING EXHAUST SYSTEM

- Check exhaust pipes, muffler, and mounting for improper attachment, leakage, cracks, damage or deterioration.

CAUTION:

Carefully check each weld.

- If anything is found, repair or replace damaged parts.



ADDITIONAL INSPECTION

Perform this additional inspection after driving under conditions listed below:

- Higher-RPM (approaching redline) operation
- Frequent high pedal force braking from moderate and higher speeds
- Frequent throttle activation
- Fast revving throughout the RPM range
- After a high performance driving, check the rear lower link bush and pillow ball for backlash. Refer to [RSU-33. "TYPE 2 : Inspection \(GT-R certified NISSAN dealer\)"](#).

NOTE:

Perform this to check impact of muffler heat on rear lower link.

- After a high performance driving, check the main muffler assembly. Refer to [EX-15. "Inspection \(GT-R certified NISSAN dealer\)"](#).

SUB MUFFLER

Inspection (GT-R certified NISSAN dealer)

INFOID:000000011485579

NOTE:

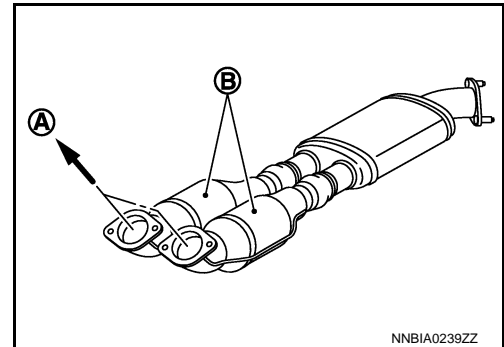
This inspection is for the following countries:

- Algeria
- Lebanon
- South Africa
- Russia

1. Remove the sub muffler from the vehicle. Refer to [EX-14. "Exploded View"](#).
2. View the sub muffler catalyst from the three way catalyst side to visually check the honeycomb structural body in the catalyst for clogging, crud, and elution. Replace the sub muffler if necessary.

- A. To three way catalyst
- B. Catalyst

3. After inspection is completed, install removed parts.



A

EX

C

D

E

F

G

H

I

J

K

L

M

N

O

P

EXHAUST SYSTEM

< REMOVAL AND INSTALLATION >

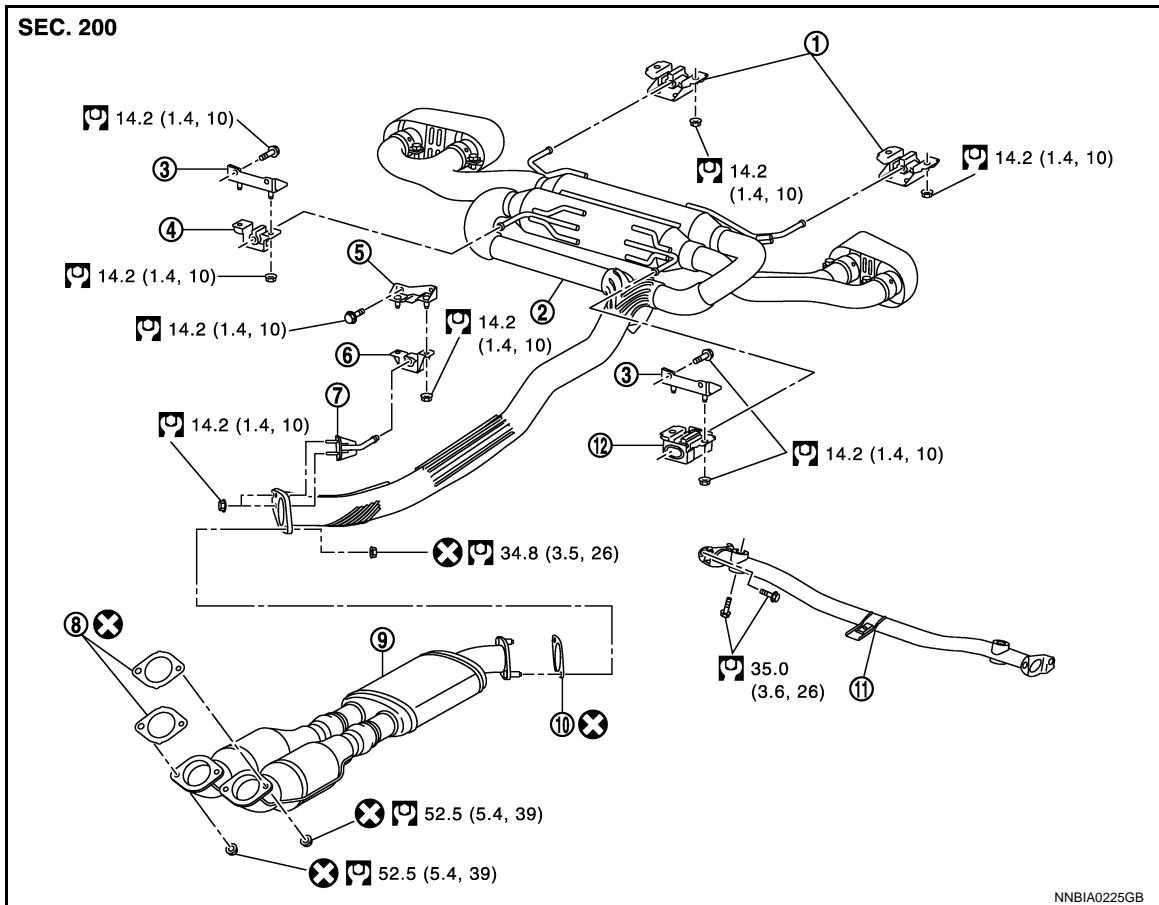
[TITANIUM MUFFLER]

REMOVAL AND INSTALLATION

EXHAUST SYSTEM

Exploded View

INFOID:000000011485580



- | | | |
|----------------------------------|------------------------------|-----------------------------------|
| 1. Mounting bracket (No. 4) | 2. Main muffler assembly | 3. Bracket |
| 4. Mounting bracket (No. 3) (RH) | 5. Bracket | 6. Mounting bracket (No. 2) |
| 7. Bracket | 8. Gasket | 9. Sub muffler |
| 10. Gasket | 11. Front cross bar assembly | 12. Mounting bracket (No. 3) (LH) |

Refer to [GI-4, "Components"](#) for symbols in the figure.

Removal and Installation (GT-R certified NISSAN dealer)

INFOID:000000011485581

CAUTION:

- Be sure to use genuine exhaust system parts or equivalents which are specially designed for heat resistance, corrosion resistance, and shape.
- Perform the operation with the exhaust system fully cooled down because the system is hot just after engine stops.
- Be careful not to cut hand on the heat insulator edge or the main muffler cooling fin.
- Never bend the cooling fin.
- Never remove finishers from a main muffler assembly.

REMOVAL

1. Remove rear diffuser. Refer to [EXT-44, "REAR DIFFUSER : Exploded View"](#).
2. Remove front diffuser. Refer to [EXT-43, "FRONT DIFFUSER : Exploded View"](#).
3. Remove rear bumper. Refer to [EXT-21, "Exploded View"](#).
4. Remove front cross bar assembly.

EXHAUST SYSTEM

[TITANIUM MUFFLER]

< REMOVAL AND INSTALLATION >

5. Remove the nuts fixing main muffler assembly and sub muffler.
6. Remove the nuts fixing sub muffler and catalyst.
7. Remove sub muffler.
8. Remove the nuts from each mounting bracket.
9. Remove main muffler assembly.

CAUTION:

- Be careful not to bump main muffler assembly against its surrounding parts.
- After removing the main muffler assembly, support the muffler with a piece of wood (avoiding the cooling fin area) to protect the cooling fin and finisher from being deformed due to direct contact with the ground.

INSTALLATION

CAUTION:

- Always replace exhaust tube gaskets with new ones when reassembling.
- If heat insulator is badly deformed, repair or replace it. If deposits such as mud pile up on the heat insulator, remove them.
- Remove deposits from the sealing surface of each connection. Connect them securely to avoid gases leakage.
- Temporarily tighten mounting bolts and nuts. Check each part for unusual interference, and then tighten them to the specified torque.
- When installing each mounting bracket, avoid twisting or unusual extension in up/down and right/left directions.

1. Install mounting brackets to main muffler assembly, checking the front mark of mounting brackets.
2. Install main muffler assembly.

CAUTION:

Be careful not to bump main muffler assembly against its surrounding parts (rear suspension member etc.).

3. Temporarily tighten the nuts of each mounting brackets.
4. Install sub muffler, and then temporarily tighten the nuts fixing main muffler assembly and sub muffler.
5. Temporarily tighten the nuts fixing sub muffler and catalyst.
6. Tighten the nuts mounting bracket (No. 4) to the specified torque.
7. Tighten the nuts mounting bracket (No. 3) to the specified torque.
8. Tighten the nuts mounting bracket (No. 2) to the specified torque.
9. Tighten the nuts fixing main muffler assembly and sub muffler to the specified torque.
10. Tighten the nuts fixing sub muffler and catalyst to the specified torque.
11. Install all the remaining parts in the reverse order of removal.

Inspection (GT-R certified NISSAN dealer)

INFOID:000000011485582

INSPECTION AFTER REMOVAL

Check each part for cracks and damage.

INSPECTION AFTER INSTALLATION

- Check the clearance between main muffler assembly and each part. Refer to "CHECKING MAIN MUFFLER ASSEMBLY".
- With engine running, check exhaust tube joints for gas leakage and unusual noise.

CHECKING MAIN MUFFLER ASSEMBLY

Refer to the following items to check each part.

Checking Pipe

Refer to the following items to check each part.

A

EX

C

D

E

F

G

H

I

J

K

L

M

N

O

P

EXHAUST SYSTEM

< REMOVAL AND INSTALLATION >

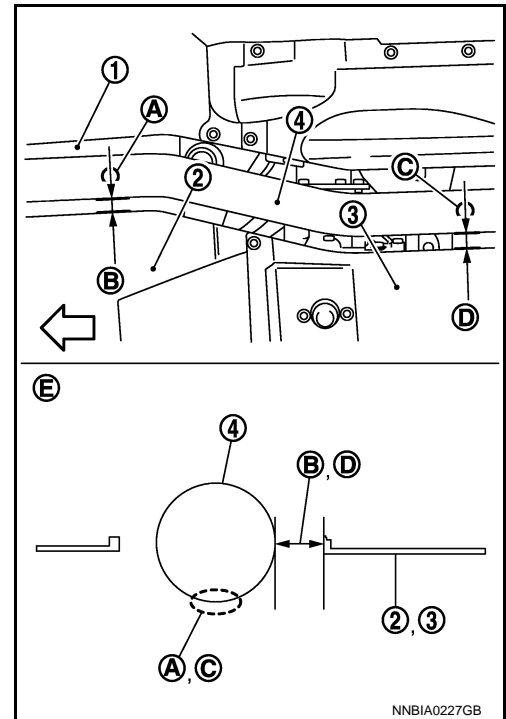
[TITANIUM MUFFLER]

- When judging the measuring point by a paint mark.

- 1 : Fuel tank protector
- 2 : Right front diffuser
- 3 : Rear diffuser (center)
- 4 : Main muffler assembly
- A : Point A (paint mark)
- B : Measuring point 1
- C : Point C (paint mark)
- D : Measuring point 2
- E : Sectional view
- ⇐ : Front of vehicle

NOTE:

- The upper side of the figure shows downward gaze, and the lower side, cross-section of the measuring point.
- If it is difficult to identify the paint marks for Point A and C, determine Measuring point 1 and 2 from the bolt position.



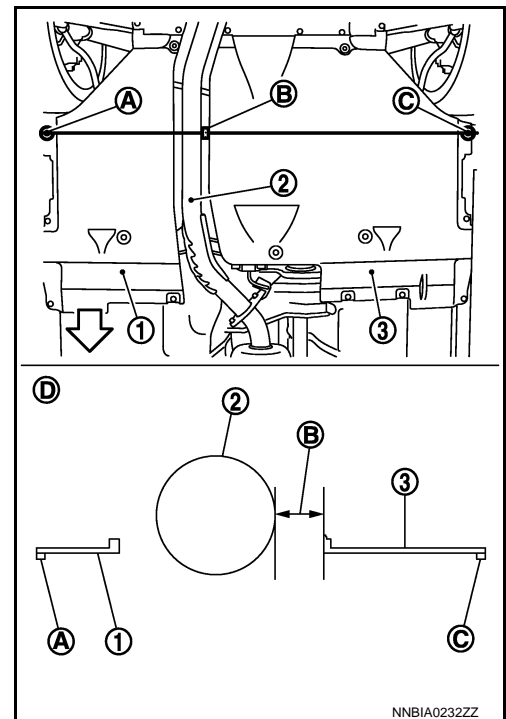
NNBIA0227GB

- When determining from the bolt position
- Measuring point 1 (B)

- 1 : Left front diffuser
- 2 : Main muffler assembly
- 3 : Right front diffuser
- A : Bolt A
- C : Bolt C
- D : Sectional view
- ⇐ : Front of vehicle

NOTE:

Measuring point 1 is the clearance between the right front diffuser on the straight line through Bolt A and Bolt C and the main muffler assembly.



NNBIA0232ZZ

EXHAUST SYSTEM

< REMOVAL AND INSTALLATION >

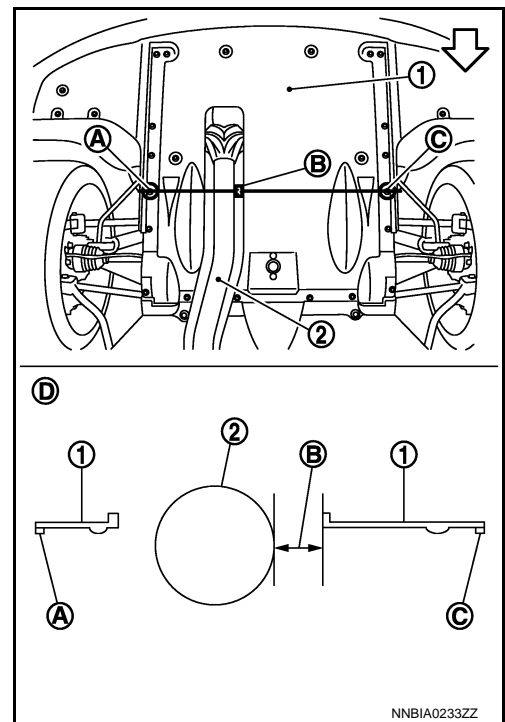
[TITANIUM MUFFLER]

- Measuring point 2 (B)

- 1 : Rear diffuser (center)
- 2 : Main muffler assembly
- A : Bolt A
- C : Bolt C
- D : Sectional view
- ⇐ : Front of vehicle

NOTE:

Measuring point 2 is the clearance between the vehicle right side of the rear diffuser (center) on the straight line through Bolt A and Bolt C and the main muffler assembly.



- Measuring point 1 (clearance between right front diffuser and main muffler assembly)

Limit : 10 mm (0.39 in)

When the clearance is less than the limit value, perform the following steps.

- Reinstall the right front diffuser and check again. Refer to [EXT-43, "FRONT DIFFUSER : Exploded View"](#).
- Check the main muffler assembly for installation condition and check again.
- If the clearance (limit value: 10 mm) cannot be obtained after performing the above steps, replace the main muffler assembly.

- Measuring point 2 [Clearance between rear diffuser (center) and main muffler assembly]

Limit : 20 mm (0.79 in)

When the clearance is less than the limit value, perform the following steps.

- Reinstall the rear diffuser (center) and check again. Refer to [EXT-44, "REAR DIFFUSER : Exploded View"](#).
- Check the main muffler assembly for installation condition and check again.
- If the clearance (limit value: 20 mm) cannot be obtained after performing the above steps, replace the main muffler assembly.

Checking Muffler

CAUTION:

- **Maintain the vehicle in a horizontal position on the flat area to perform the following inspection.**
- **Do not remove "Titanium muffler specifications" from center console lid (except when replacing center console lid).**

NOTE:

EXHAUST SYSTEM

[TITANIUM MUFFLER]

< REMOVAL AND INSTALLATION >

Factory default measurements are indicated on the back of center console lid. Write them down before inspection. (This helps the calculation for limit values.)

Titanium muffler specifications	
Date (MM/DD/YY): / /	
Vehicle Identification Number (VIN)	
Odometer reading at the time of circuit test completion	_____ km/miles
Measured Value (for model with the Titanium Muffler) *1	
1: Tube to Front Diffuser	_____ mm
2: Tube to Rear Diffuser	_____ mm
3: Point A (Body) to Ground	B: _____ mm
4: Point C (Muffler) to Ground	D: _____ mm
Standard Value (B-D= Standard Value)	_____ mm
Signature of Factory Test Personnel	

*1: Measured and filled in when applicable

NISSAN MOTOR CO., LTD.

JSBIA5651GB

1. Determine the measurement point, according to the following method.
- a. Connect Bolt A (A) and the pipe branch point (C) of the main muffler assembly by a straight line.

← : Front of vehicle

- b. Put a mark (B) on the lowermost part of muffler on the straight line. (Point C of Step 2)

CAUTION:

To eliminate measurement deviation due to muffler shape (cylindrical shape), carefully check that the mark (B) is on the lowermost part of muffler.

NOTE:

If the black paint can be identified, then the paint is determined as Point C. In this case, marking is not necessary.

- c. Check the position of the ground wire fixing bolt (D) on the body side of the rear diffuser (center).

NOTE:

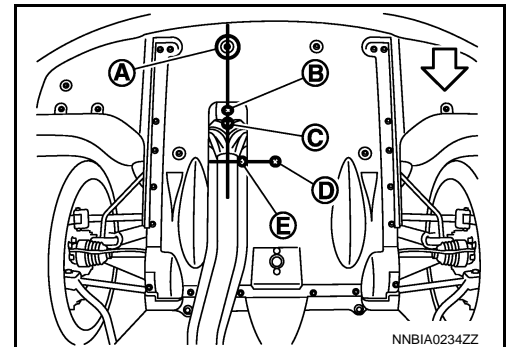
Although the position of the ground wire fixing bolt can be checked with the rear diffuser (center) installed, remove the rear diffuser (center), as necessary. Refer to [EXT-44. "REAR DIFFUSER : Exploded View"](#).

- d. Connect the straight line from Bolt A and the straight line from the ground fixing bolt to the main muffler assembly, crossing each other at right angles.

- e. Put a mark (E) on a point on the straight line from the ground fixing bolt, avoiding a position involving the pipe of the main muffler assembly. (Point A of Step 2)

NOTE:

Some displacement is permissible when marked on the same plane as the mounting surface of the ground wire fixing bolt. Therefore, directly measure where it is difficult to put Mark (E).



EXHAUST SYSTEM

< REMOVAL AND INSTALLATION >

[TITANIUM MUFFLER]

2. Measure the following points, referring to the figure.

- 1 : Rear diffuser (center)
- 2 : Main muffler assembly
- 3 : Rear stabilizer
- A : Point A
- B : Measuring point 3
- C : Point C
- D : Measuring point 4
- ⇐ : Front of vehicle

NOTE:

- Although the point can be checked with the rear diffuser (center) installed, remove the rear diffuser (center), if it is difficult to measure. Refer to [EXT-44, "REAR DIFFUSER : Exploded View"](#).
- The lower figure shows the measuring points with the rear diffuser (center) removed

3. Measure Measuring point 3 [distance between Point A (body) and the ground].
4. Measure Measuring point 4 [distance between Point C (main muffler) and the ground].

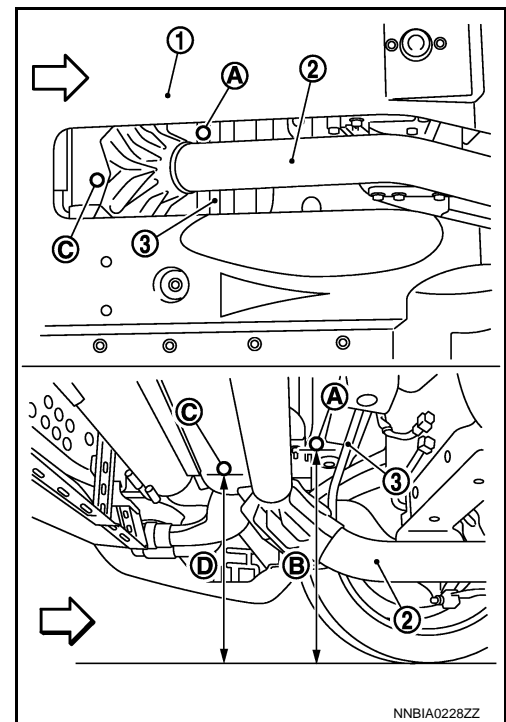
CAUTION:

Always measure from the lowermost part of the muffler.

5. Subtract the value of Measuring point 4 from that of Measuring point 3.

Limit : Within the factory-measured value (described in the back of center console lid) \pm 8 mm (0.31 in)

- a. If the measurement is less than the limit value, check the main muffler assembly for installation condition.
- b. Recheck and replace the main muffler assembly if the measurement is less than the limit value.



NNBIA0228ZZ

A
EX
C
D
E
F
G
H
I
J
K
L
M
N
O
P