

# ACCELERATOR CONTROL, FUEL & EXHAUST SYSTEMS

## SECTION FE

GI  
MA  
EM  
LC  
EF &  
EC  
FE  
CL  
MT  
AT  
TF  
PD  
FA  
RA  
BR  
ST  
BF  
HA  
EL  
IDX

### MODIFICATION NOTICE:

- For 2WD, M/T models for California equipped with KA24E engine, a new running-loss evaporative emission system has moved the canister near the fuel tank, causing fuel hoses to be re-routed.

## CONTENTS

<b>FUEL SYSTEM</b> .....	2	KA24E model (4WD) .....	5
<b>EXHAUST SYSTEM</b> .....	4	VG30E model (4WD) for Truck .....	6
		VG30E model (4WD) for Wagon .....	7
KA24E model (2WD) .....	4	VG30E model (2WD) for Wagon .....	8

# FUEL SYSTEM

## WARNING:

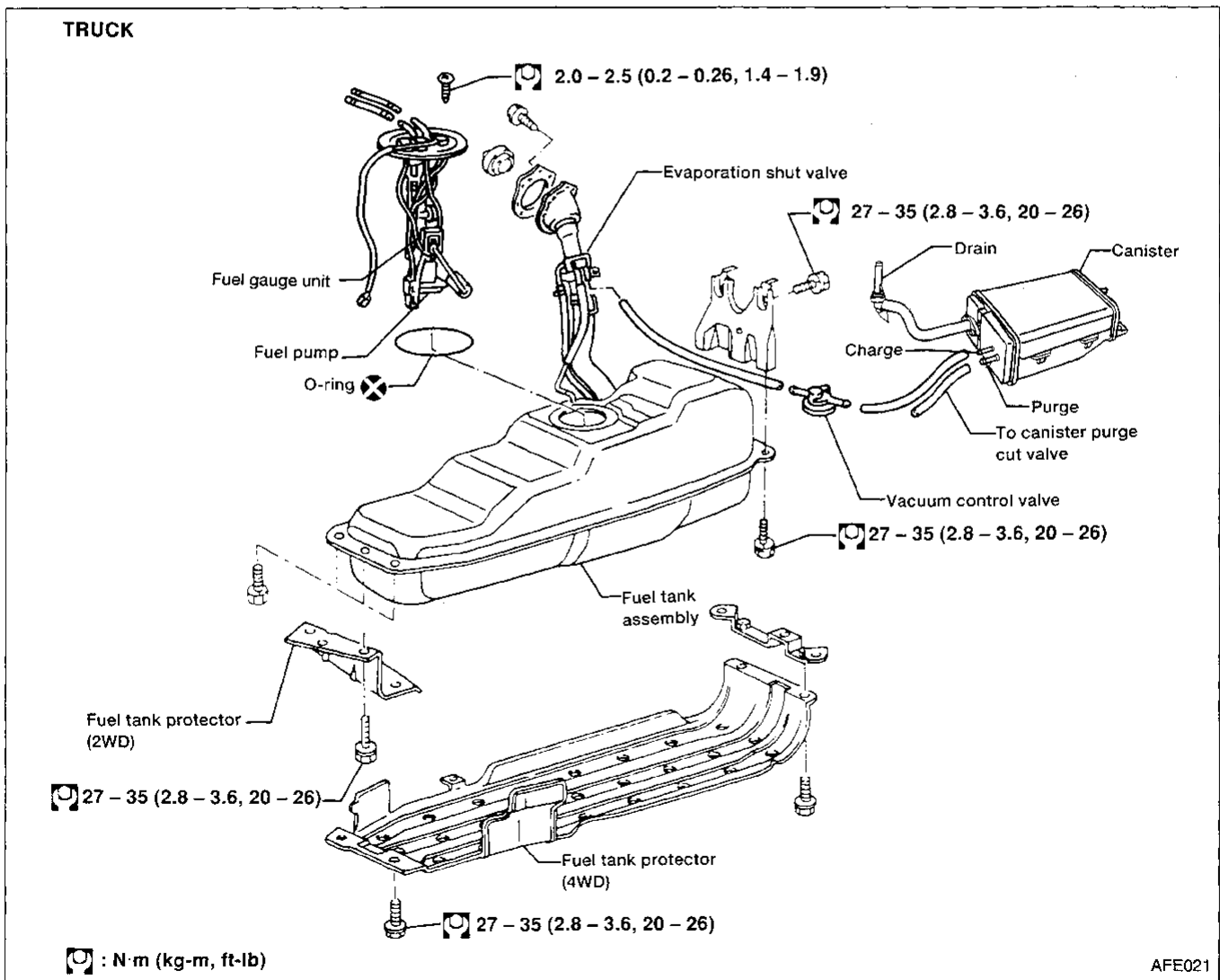
When replacing fuel line parts, be sure to observe the following:

- Put a "CAUTION: INFLAMMABLE" sign in workshop.
- Do not smoke while servicing fuel system. Keep open flames and sparks away from work area.
- Be sure to furnish the workshop with a CO<sub>2</sub> fire extinguisher.
- Be sure to disconnect battery ground cable before conducting operations.
- Drain fuel from Fuel Tank and put drained fuel in an explosion-proof container and attach lid securely.

## CAUTION:

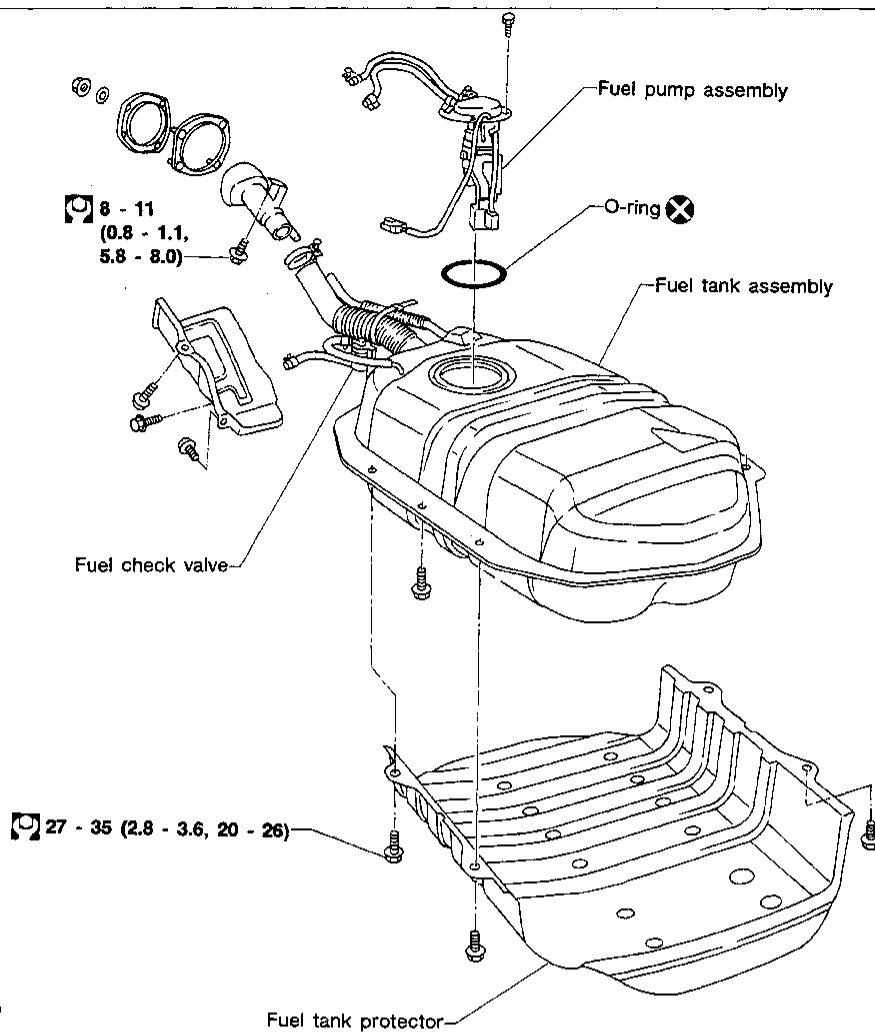
- Before disconnecting fuel hose, release fuel pressure from fuel line. Refer to the "Changing Fuel Filter" in MA section.
- Do not disconnect any fuel line unless absolutely necessary.
- Plug hose and pipe openings to prevent entry of dust or dirt.
- Always replace O-ring with new ones.
- Do not kink or twist hose and tube when they are installed.
- Do not tighten hose clamps excessively to avoid damaging hoses.
- When installing fuel check valve, be careful of its designated direction. (Refer to "EVAPORATIVE EMISSION SYSTEM" in EF & EC section.)
- After installation, run engine and check for fuel leaks at connections.

## KA24E ENGINE, 2WD, M/T models for California



# FUEL SYSTEM

## Van and Wagon



: N·m (kg·m, ft·lb)

AFE025

GI

MA

EM

LC

EF &  
EC

**FE**

CL

MT

AT

TF

PD

FA

RA

BR

ST

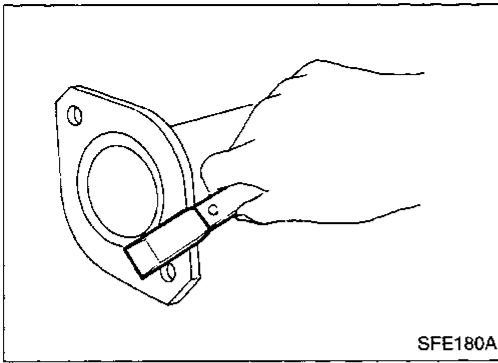
BF

HA

EL

IDX

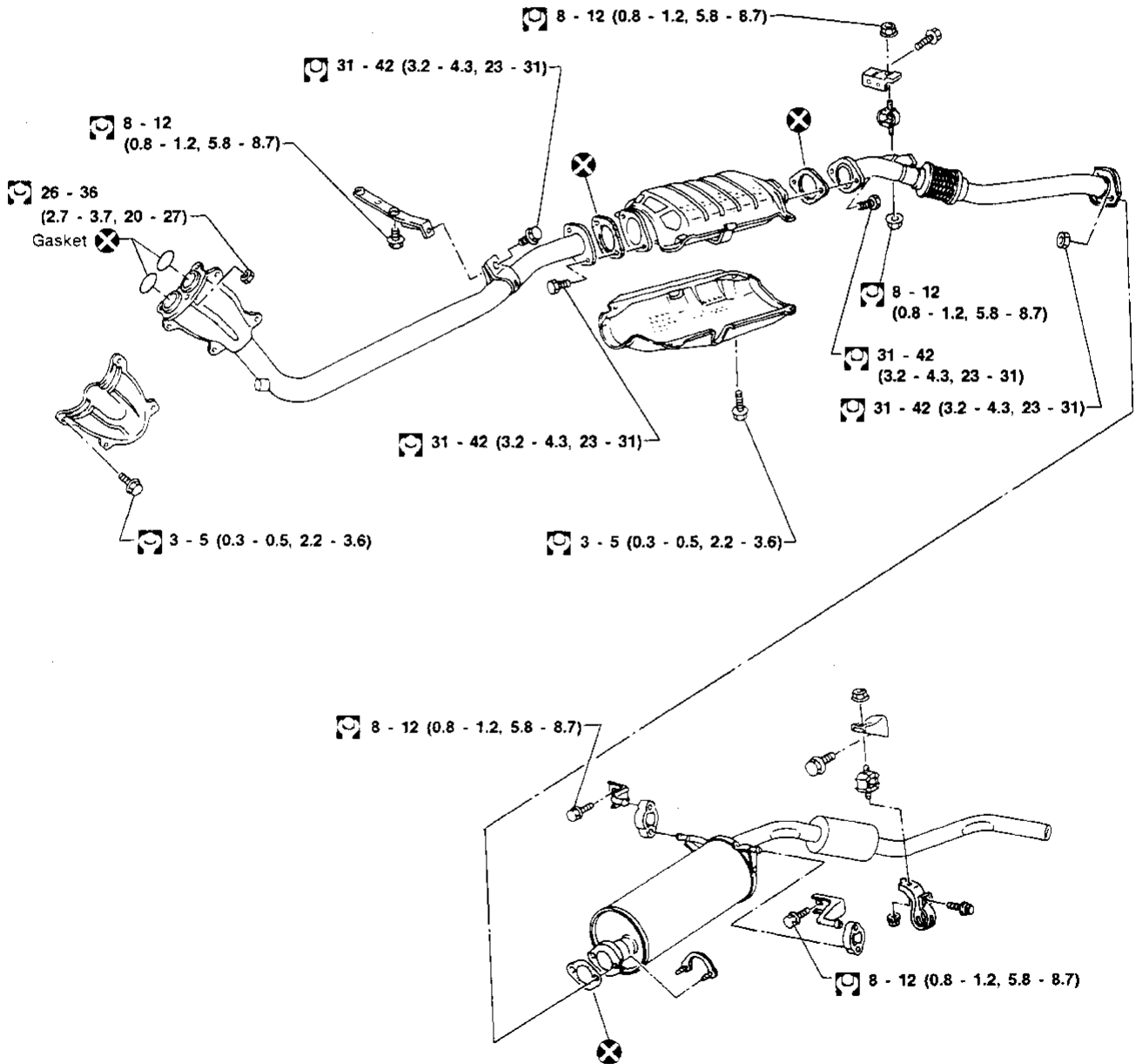
# EXHAUST SYSTEM



## CAUTION:

- Always replace exhaust gaskets with new ones when reassembling.  
If gasket is left on flange surface, scrape off completely as shown at left.
- With engine running, check all tube connections for exhaust gas leaks, and entire system for unusual noises.
- After installation, check to ensure that mounting brackets and mounting insulators are free from undue stress. If any of the above parts are not installed properly, excessive noise or vibration may be transmitted to the vehicle body.

## KA24E model (2WD)

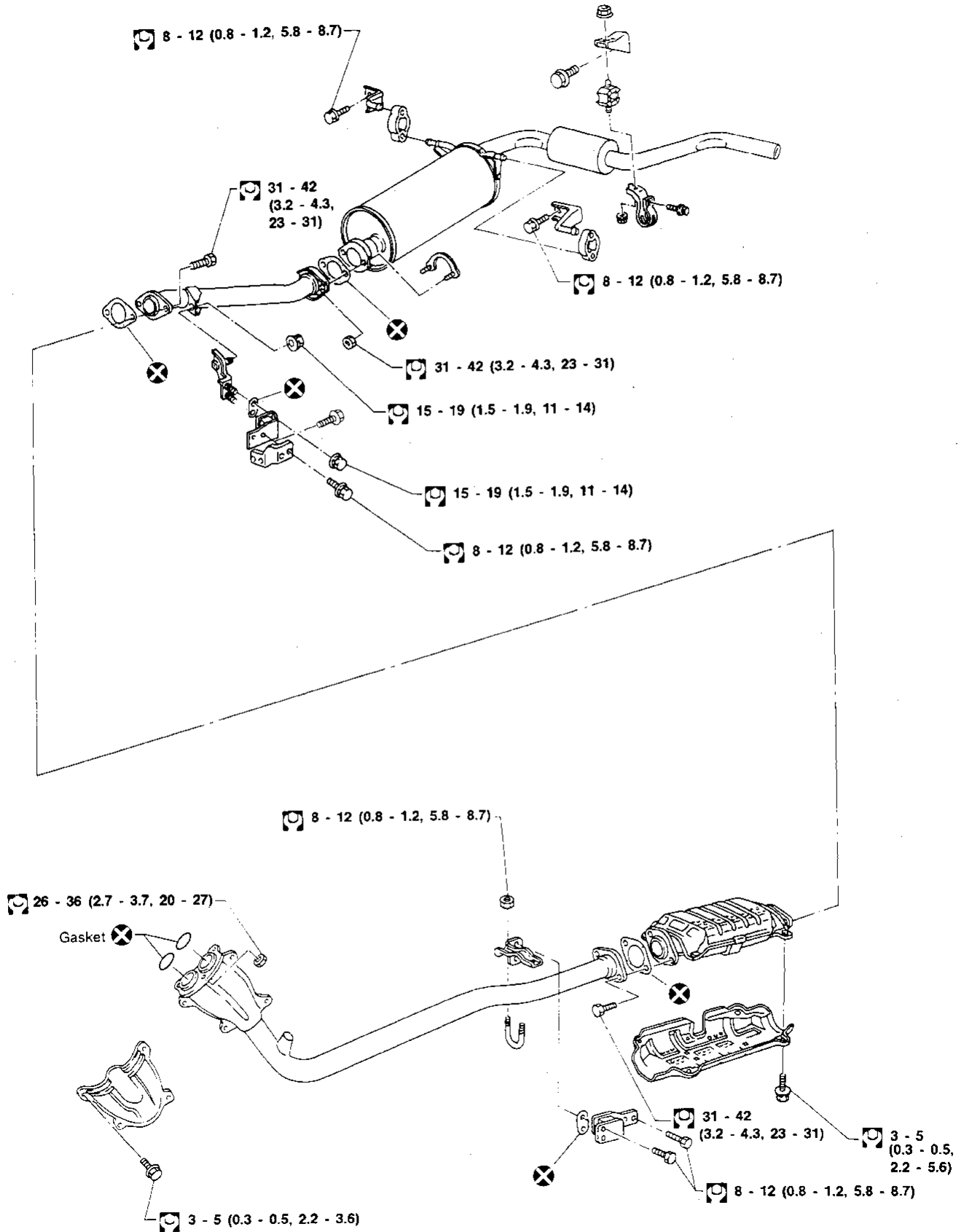


: N·m (kg-m, ft-lb)

AFE022

# EXHAUST SYSTEM

KA24E model (4WD)



: N·m (kg·m, ft·lb)

FE-5

AFE023

GI

MA

EM

LC

EF &  
EC

FE

CL

MT

AT

TF

PD

FA

RA

BR

ST

BF

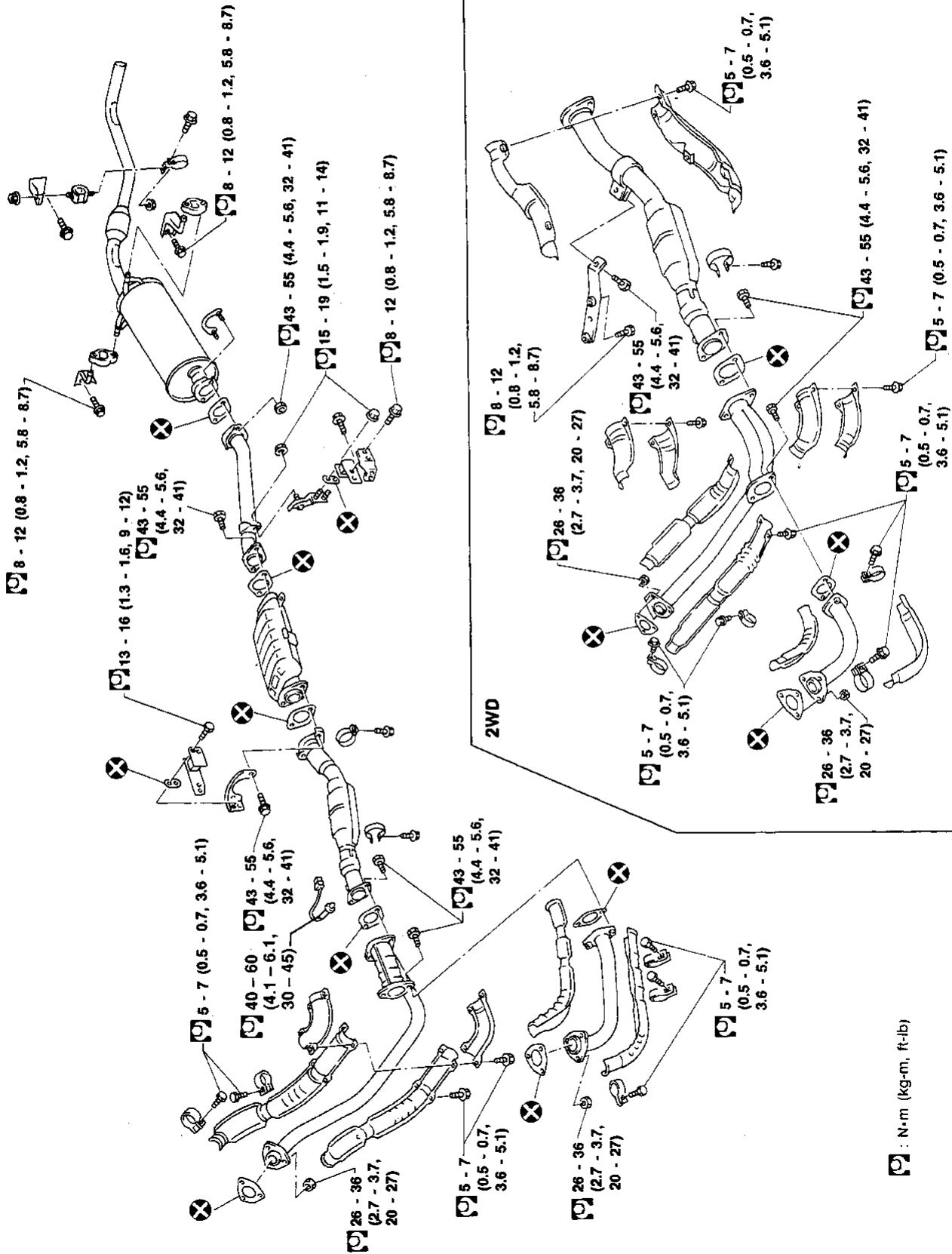
HA

EL

IDX

# EXHAUST SYSTEM

VG30E model (4WD) for Truck



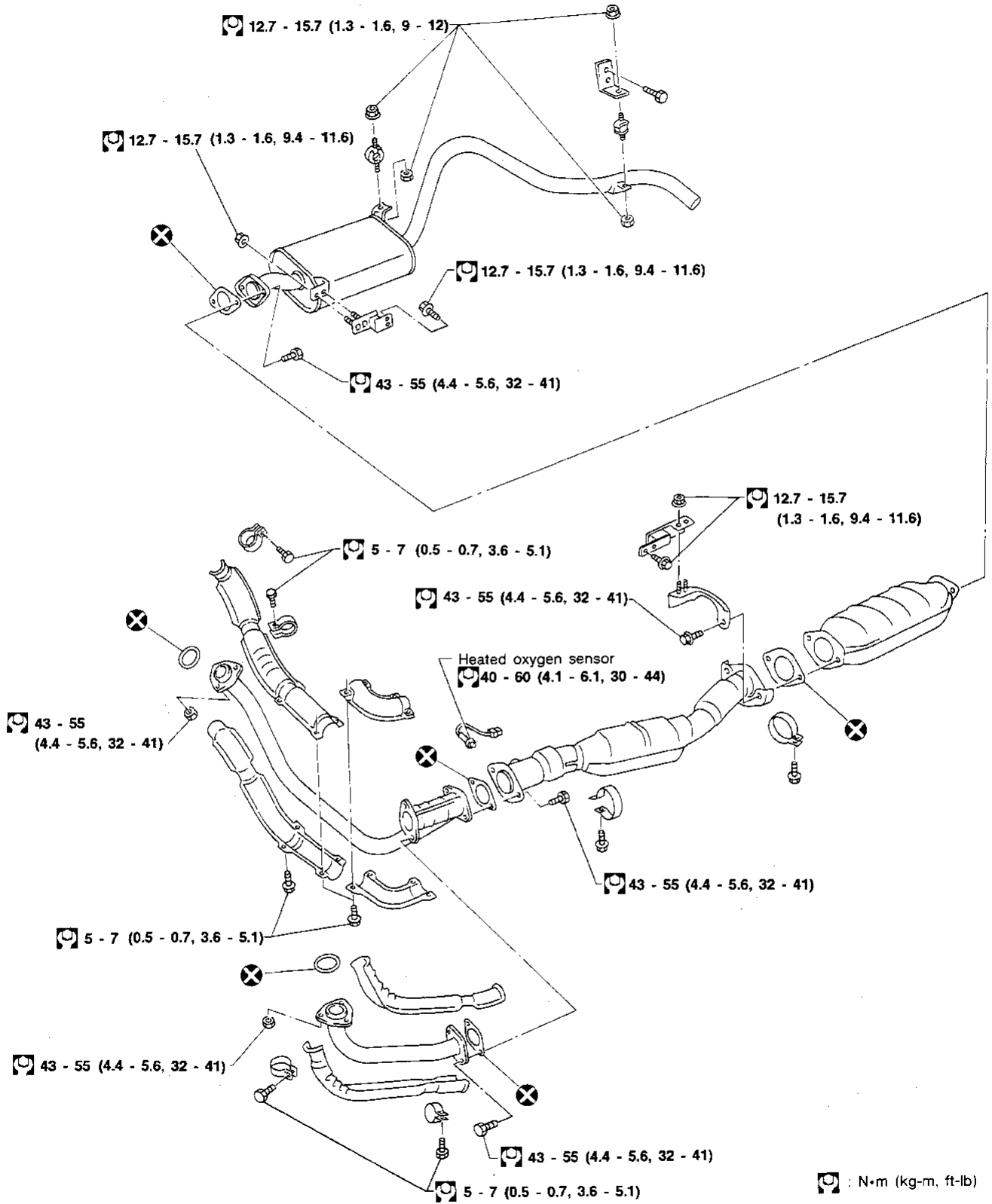
FE-6

☐ : N·m (kg-m, ft-lb)

AFE024

# EXHAUST SYSTEM

VG30E model (4WD) for Wagon



GI

MA

EM

LC

EF &  
EC

FE

CL

MT

AT

TF

PD

FA

RA

BR

ST

BF

HA

EL

IDX

# EXHAUST SYSTEM

VG30E model (2WD) for Wagon

