

STEERING SYSTEM

SECTION **ST**

CONTENTS

STEERING WHEEL AND STEERING COLUMN	2	POWER STEERING SYSTEM (Model: PB48S)	4
Removal and Installation	2	Description	4
Inspection	2	SERVICE DATA AND SPECIFICATIONS (SDS)	5
POWER STEERING SYSTEM (Model: PB59K)	3	Inspection and Adjustment.....	5
Description	3	Steering Column	5

GI

MA

EM

LC

EF &

EC

FE

CL

MT

AT

TF

PD

FA

RA

BR

ST

BF

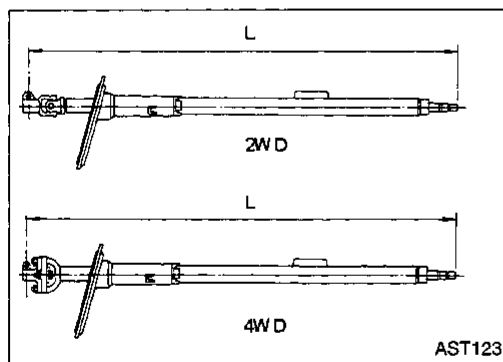
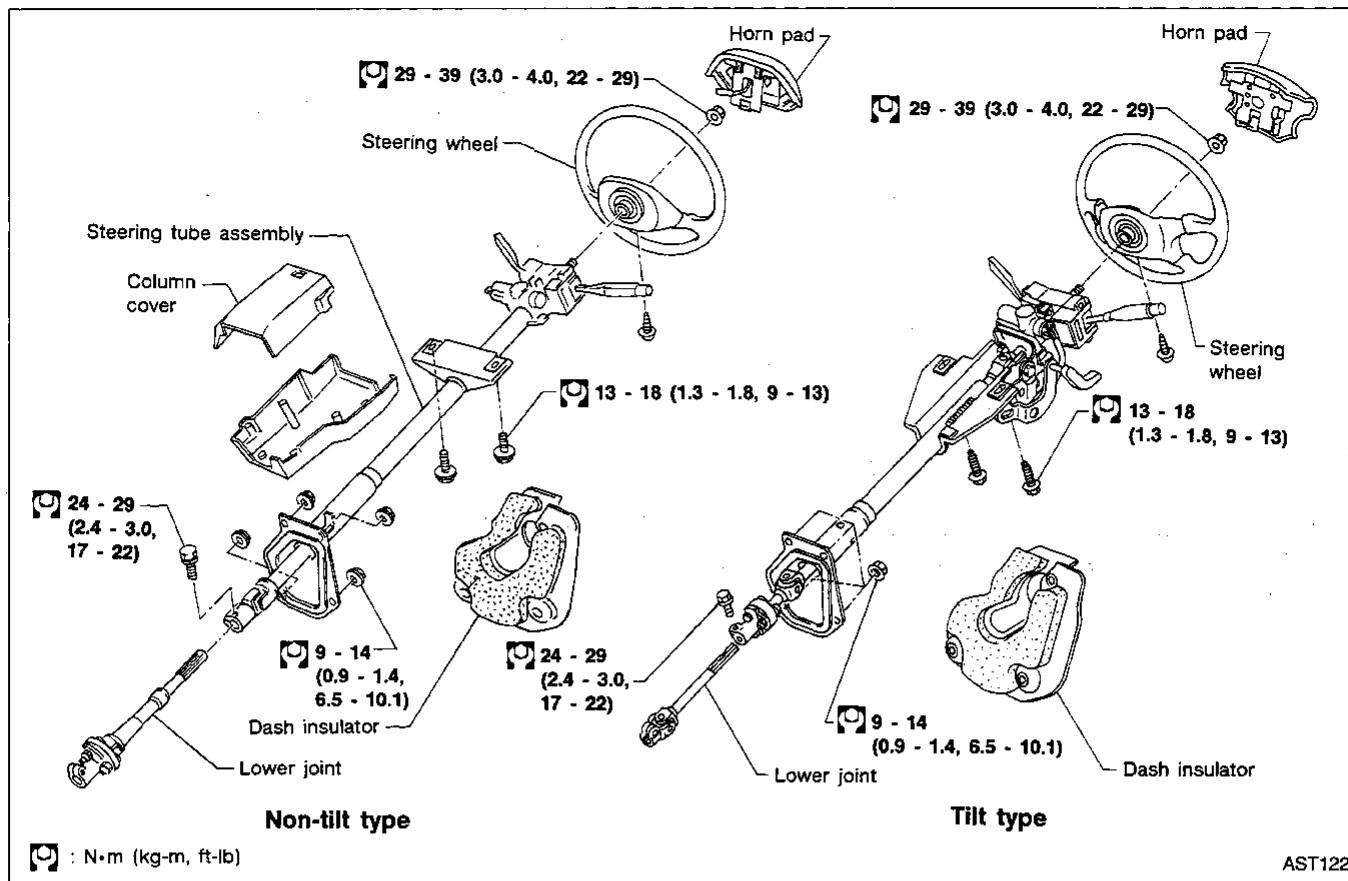
HA

EL

IDX

STEERING WHEEL AND STEERING COLUMN

Removal and Installation



Inspection

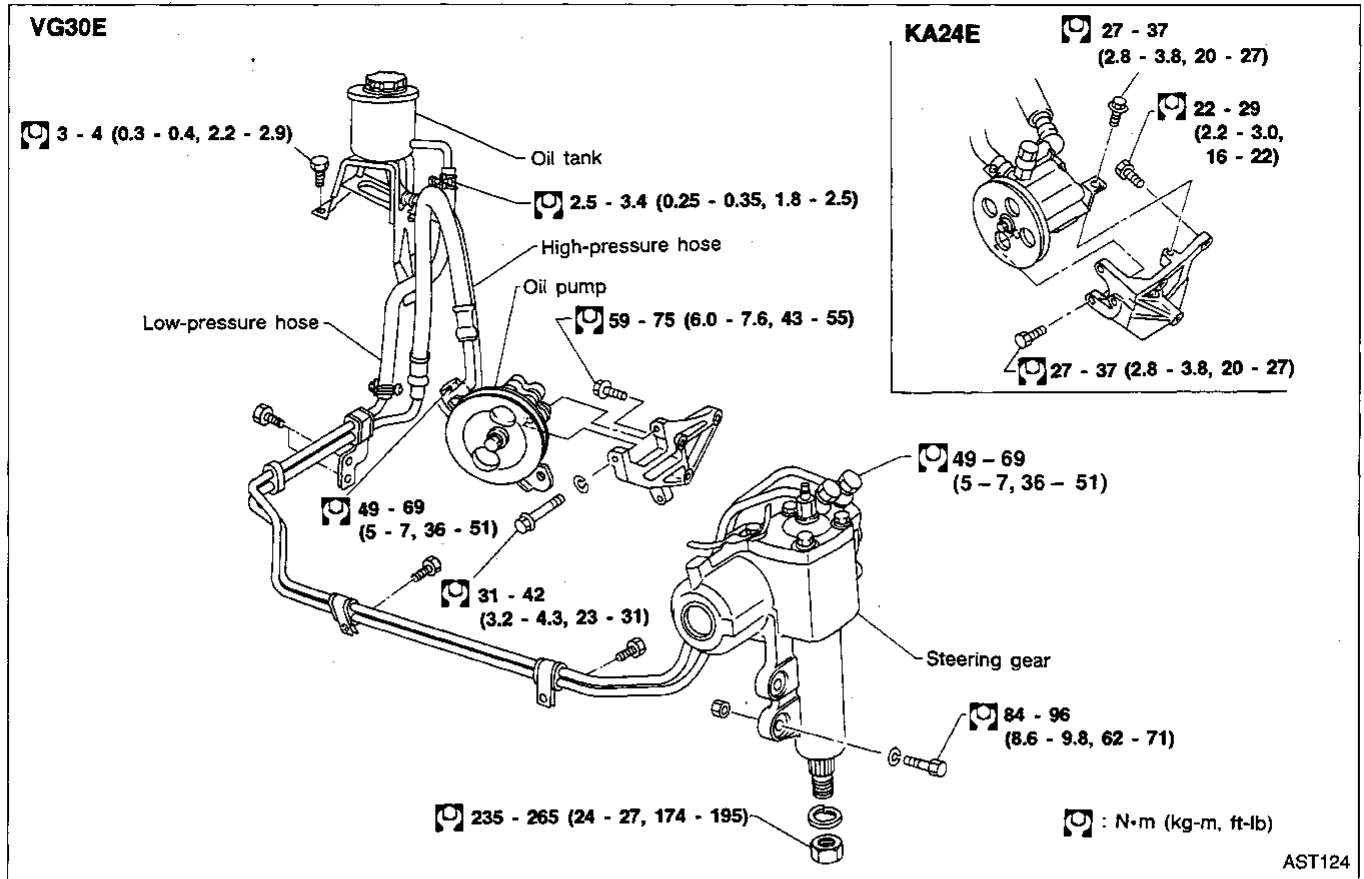
- When steering wheel can not be rotated smoothly, check the steering column for the following matters and replace damaged parts.
 - Check column bearings for damage or unevenness. Lubricate with recommended multi-purpose grease or replace steering column as an assembly, if necessary.
 - Check jacket tube for deformation or breakage. Replace if necessary.
- When the vehicle is involved in a light collision, check dimension "L". If it is not within specifications, replace steering column as an assembly.

Column length "L":

Refer to SDS, ST-5.

POWER STEERING SYSTEM (Model: PB59K)

Description



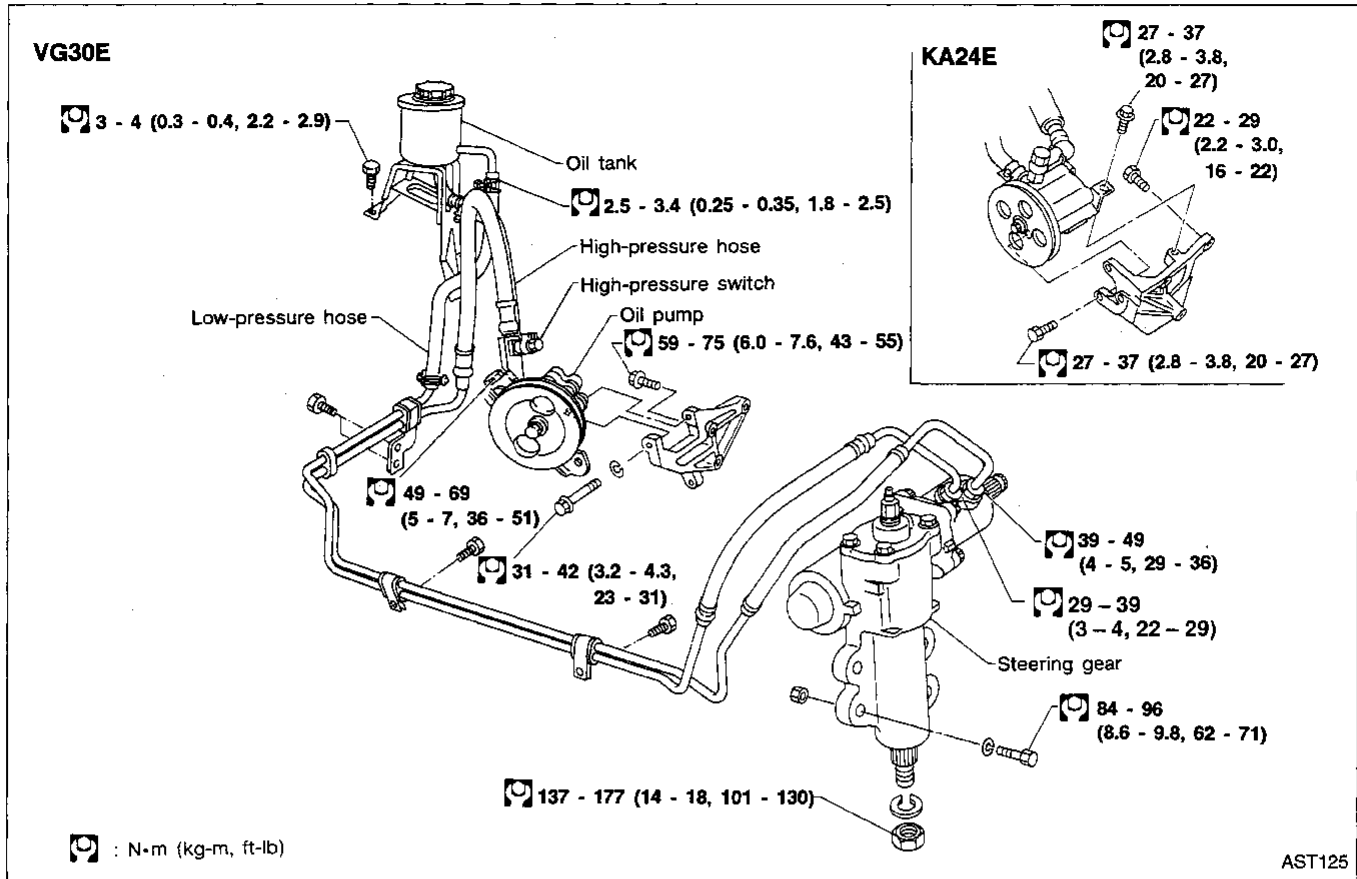
Only the sealing parts can be replaced. The remaining parts must be replaced as an assembly.

CAUTION:

- The parts which can be disassembled are strongly restricted, and never disassemble other parts than the specified ones.
- Disassembly should be performed in a place as clean as possible.
- Hands should be cleaned before disassembly.
- Do not use a rag. Be sure to use nylon or paper cloth.
- Be sure to follow procedures and cautions indicated in the Service Manual.

POWER STEERING SYSTEM (Model: PB48S)

Description



This power steering adopts spool valve control which was developed in a technical tie-up with the ZF Company.

Only the sealing parts can be replaced. The remaining parts must be replaced as an assembly.

CAUTION:

- The parts which can be disassembled are strongly restricted, and never disassemble other parts than the specified ones.
- Disassembly should be performed in a place as clean as possible.
- Hands should be cleaned before disassembly.
- Do not use a rag. Be sure to use nylon or paper cloth.
- Be sure to follow procedures and cautions indicated in the Service Manual.

SERVICE DATA AND SPECIFICATIONS (SDS)

Inspection and Adjustment

STEERING COLUMN

Unit: mm (in)

	Dimension "L"			
	TRUCK		TRUCK	WAGON
	Non-tilt type		Tilt type	
	M/T	A/T	—	
2WD model	TYPE I 918.0 - 919.6 (36.14 - 36.20)	TYPE I 886.1 - 887.7 (36.14 - 36.20)	TYPE I 918.0 - 919.6 (36.14 - 36.20)	TYPE II 886.1 - 887.7 (34.89 - 34.95)
4WD model	TYPE II 886.1 - 887.7 (34.89 - 34.95)		TYPE II 886.1 - 887.7 (34.89 - 34.95)	

