

SECTION IP
INSTRUMENT PANEL

A
B
C
D
E
F
G
H
IP
J
K
L
M

CONTENTS

<p>PRECAUTIONS 2 Precautions for Supplemental Restraint System (SRS) "AIR BAG" and "SEAT BELT PRE-TENSIONER" 2 PREPARATION 3 Special Service Tools 3 Commercial Service Tools 3 SQUEAK AND RATTLE TROUBLE DIAGNOSIS 4 Work Flow 4 CUSTOMER INTERVIEW 4 DUPLICATE THE NOISE AND TEST DRIVE 5 CHECK RELATED SERVICE BULLETINS 5 LOCATE THE NOISE AND IDENTIFY THE ROOT CAUSE 5 REPAIR THE CAUSE 5 CONFIRM THE REPAIR 6</p>	<p>Generic Squeak and Rattle Troubleshooting 6 INSTRUMENT PANEL 6 CENTER CONSOLE 6 DOORS 6 TRUNK 7 SUNROOF/HEADLINER 7 SEATS 7 UNDERHOOD 7 Diagnostic Worksheet 8 INSTRUMENT PANEL ASSEMBLY 10 Removal and Installation 10 REMOVAL AND INSTALLATION 12 Disassembly and Assembly 17 CENTER CONSOLE 17 Disassembly and Assembly 18 REAR CONSOLE 18</p>
---	--

PRECAUTIONS

PRECAUTIONS

PFP:00001

Precautions for Supplemental Restraint System (SRS) “AIR BAG” and “SEAT BELT PRE-TENSIONER”

EIS001KT

The Supplemental Restraint System such as “AIR BAG” and “SEAT BELT PRE-TENSIONER”, used along with a front seat belt, helps to reduce the risk or severity of injury to the driver and front passenger for certain types of collision. This system includes seat belt switch inputs and dual stage front air bag modules. The SRS system uses the seat belt switches to determine the front air bag deployment, and may only deploy one front air bag, depending on the severity of a collision and whether the front occupants are belted or unbelted. Information necessary to service the system safely is included in the SRS and SB section of this Service Manual.

WARNING:

- To avoid rendering the SRS inoperative, which could increase the risk of personal injury or death in the event of a collision which would result in air bag inflation, all maintenance must be performed by an authorized NISSAN/INFINITI dealer.
- Improper maintenance, including incorrect removal and installation of the SRS, can lead to personal injury caused by unintentional activation of the system. For removal of Spiral Cable and Air Bag Module, see the SRS section.
- Do not use electrical test equipment on any circuit related to the SRS unless instructed to in this Service Manual. SRS wiring harnesses can be identified by yellow and/or orange harness connectors.

PREPARATION

PREPARATION

PF0:0002

Special Service Tools

EIS001KU

The actual shapes of Kent-Moore tools may differ from those of special service tools illustrated here.

Tool number (Kent-Moore No.) Tool name	Description
(J-39570) Chassis ear <div data-bbox="589 420 849 716" data-label="Image"> </div> <div data-bbox="873 720 927 739" data-label="Caption"> <p>SBT839</p> </div>	Locating the noise
(J-43980) NISSAN Squeak and Rattle kit <div data-bbox="557 772 846 1087" data-label="Image"> </div> <div data-bbox="873 1083 927 1102" data-label="Caption"> <p>SBT840</p> </div>	Repairing the cause of noise

Commercial Service Tools

EIS001KV

Tool name	Description
Engine ear <div data-bbox="646 1249 889 1419" data-label="Image"> </div> <div data-bbox="849 1423 919 1442" data-label="Caption"> <p>SIIA0995E</p> </div>	Locating the noise
Power Tool <div data-bbox="630 1518 919 1633" data-label="Image"> </div> <div data-bbox="849 1656 919 1675" data-label="Caption"> <p>PBIC0191E</p> </div>	Loosening bolts and nuts

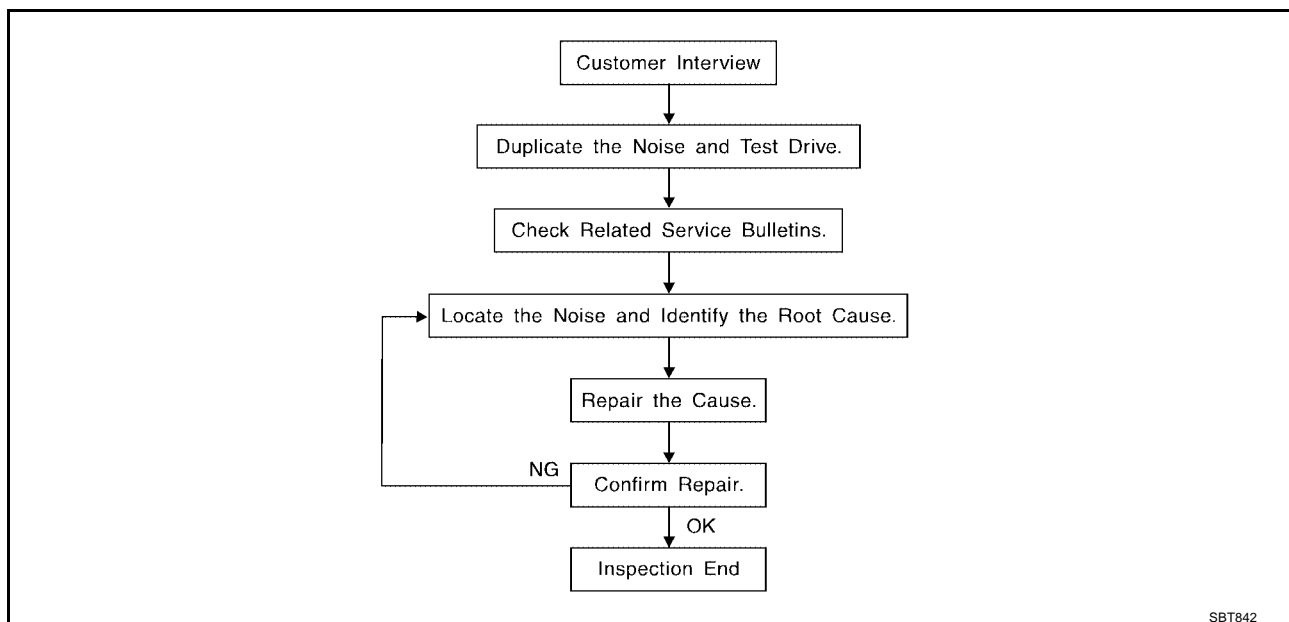
SQUEAK AND RATTLE TROUBLE DIAGNOSIS

SQUEAK AND RATTLE TROUBLE DIAGNOSIS

PF0:0000

Work Flow

EIS001KW



CUSTOMER INTERVIEW

Interview the customer, if possible, to determine the conditions that exist when the noise occurs. Use the Diagnostic Worksheet during the interview to document the facts and conditions when the noise occurs and any customer's comments; refer to [IP-8, "Diagnostic Worksheet"](#). This information is necessary to duplicate the conditions that exist when the noise occurs.

- The customer may not be able to provide a detailed description or the location of the noise. Attempt to obtain all the facts and conditions that exist when the noise occurs (or does not occur).
- If there is more than one noise in the vehicle, be sure to diagnose and repair the noise that the customer is concerned about. This can be accomplished by test driving the vehicle with the customer.
- After identifying the type of noise, isolate the noise in terms of its characteristics. The noise characteristics are provided so the customer, service adviser and technician are all speaking the same language when defining the noise.
- Squeak — (Like tennis shoes on a clean floor)
Squeak characteristics include the light contact/fast movement/brought on by road conditions/hard surfaces = higher pitch noise/softer surfaces = lower pitch noises/edge to surface = chirping.
- Creak — (Like walking on an old wooden floor)
Creak characteristics include firm contact/slow movement/twisting with a rotational movement/pitch dependent on materials/often brought on by activity.
- Rattle — (Like shaking a baby rattle)
Rattle characteristics include the fast repeated contact/vibration or similar movement/loose parts/missing clip or fastener/incorrect clearance.
- Knock — (Like a knock on a door)
Knock characteristics include hollow sounding/sometimes repeating/often brought on by driver action.
- Tick — (Like a clock second hand)
Tick characteristics include gentle contacting of light materials/loose components/can be caused by driver action or road conditions.
- Thump — (Heavy, muffled knock noise)
Thump characteristics include softer knock/dead sound often brought on by activity.
- Buzz — (Like a bumblebee)
Buzz characteristics include high frequency rattle/firm contact.
- Often the degree of acceptable noise level will vary depending upon the person. A noise that you may judge as acceptable may be very irritating to the customer.
- Weather conditions, especially humidity and temperature, may have a great effect on noise level.

SQUEAK AND RATTLE TROUBLE DIAGNOSIS

DUPLICATE THE NOISE AND TEST DRIVE

If possible, drive the vehicle with the customer until the noise is duplicated. Note any additional information on the Diagnostic Worksheet regarding the conditions or location of the noise. This information can be used to duplicate the same conditions when you confirm the repair.

If the noise can be duplicated easily during the test drive, to help identify the source of the noise, try to duplicate the noise with the vehicle stopped by doing one or all of the following:

1. Close a door.
 2. Tap or push/pull around the area where the noise appears to be coming from.
 3. Rev the engine.
 4. Use a floor jack to recreate vehicle "twist".
 5. At idle, apply engine load (electrical load, half-clutch on M/T model, drive position on A/T model).
 6. Raise the vehicle on a hoist and hit a tire with a rubber hammer.
- Drive the vehicle and attempt to duplicate the conditions the customer states exist when the noise occurs.
 - If it is difficult to duplicate the noise, drive the vehicle slowly on an undulating or rough road to stress the vehicle body.

CHECK RELATED SERVICE BULLETINS

After verifying the customer concern or symptom, check ASIST for Technical Service Bulletins (TSBs) related to that concern or symptom.

If a TSB relates to the symptom, follow the procedure to repair the noise.

LOCATE THE NOISE AND IDENTIFY THE ROOT CAUSE

1. Narrow down the noise to a general area. To help pinpoint the source of the noise, use a listening tool (Chassis Ear: J-39570, Engine Ear: J-39565 and mechanics stethoscope).
2. Narrow down the noise to a more specific area and identify the cause of the noise by:
 - Removing the components in the area that you suspect the noise is coming from.
Do not use too much force when removing clips and fasteners, otherwise clips and fasteners can be broken or lost during the repair, resulting in the creation of new noise.
 - Tapping or pushing/pulling the component that you suspect is causing the noise.
Do not tap or push/pull the component with excessive force, otherwise the noise will be eliminated only temporarily.
 - Feeling for a vibration with your hand by touching the component(s) that you suspect is (are) causing the noise.
 - Placing a piece of paper between components that you suspect are causing the noise.
 - Looking for loose components and contact marks.

Refer to [IP-6, "Generic Squeak and Rattle Troubleshooting"](#).

REPAIR THE CAUSE

- If the cause is a loose component, tighten the component securely.
- If the cause is insufficient clearance between components:
 - Separate components by repositioning or loosening and retightening the component, if possible.
 - Insulate components with a suitable insulator such as urethane pads, foam blocks, felt cloth tape or urethane tape. A NISSAN Squeak and Rattle Kit (J-43980) is available through your authorized NISSAN Parts Department.

CAUTION:

Do not use excessive force as many components are constructed of plastic and may be damaged.

Always check with the Parts Department for the latest parts information.

The following materials are contained in the NISSAN Squeak and Rattle Kit (J-43980). Each item can be ordered separately as needed.

URETHANE PADS [1.5 mm (0.059 in) thick]

Insulates connectors, harness, etc.

76268-9E005: 100 x 135 mm (3.94 x 5.31 in)/76884-71L01: 60 x 85 mm (2.36 x 3.35 in)/76884-71L02: 15 x 25 mm (0.59 x 0.98 in)

INSULATOR (Foam blocks)

Insulates components from contact. Can be used to fill space behind a panel.

SQUEAK AND RATTLE TROUBLE DIAGNOSIS

73982-9E000: 45 mm (1.77 in) thick, 50 x 50 mm (1.97 x 1.97 in)/73982-50Y00: 10 mm (0.39 in) thick, 50 x 50 mm (1.97 x 1.97 in)

INSULATOR (Light foam block)

80845-71L00: 30 mm (1.18 in) thick, 30 x 50 mm (1.18 x 1.97 in)

FELT CLOTH TAPE

Used to insulate where movement does not occur. Ideal for instrument panel applications.

68370-4B000: 15 x 25 mm (0.59 x 0.98 in) pad/68239-13E00: 5 mm (0.20 in) wide tape roll

The following materials, not found in the kit, can also be used to repair squeaks and rattles.

UHMW (TEFLON) TAPE

Insulates where slight movement is present. Ideal for instrument panel applications.

SILICONE GREASE

Used in place of UHMW tape that will be visible or not fit.

Note: Will only last a few months.

SILICONE SPRAY

Use when grease cannot be applied.

DUCT TAPE

Use to eliminate movement.

CONFIRM THE REPAIR

Confirm that the cause of a noise is repaired by test driving the vehicle. Operate the vehicle under the same conditions as when the noise originally occurred. Refer to the notes on the Diagnostic Worksheet.

Generic Squeak and Rattle Troubleshooting

EIS001KX

Refer to Table of Contents for specific component removal and installation information.

INSTRUMENT PANEL

Most incidents are caused by contact and movement between:

1. The cluster lid A and instrument panel
2. Acrylic lens and combination meter housing
3. Instrument panel to front pillar garnish
4. Instrument panel to windshield
5. Instrument panel mounting pins
6. Wiring harnesses behind the combination meter
7. A/C defroster duct and duct joint

These incidents can usually be located by tapping or moving the components to duplicate the noise or by pressing on the components while driving to stop the noise. Most of these incidents can be repaired by applying felt cloth tape or silicone spray (in hard to reach areas). Urethane pads can be used to insulate wiring harness.

CAUTION:

Do not use silicone spray to isolate a squeak or rattle. If you saturate the area with silicone, you will not be able to recheck the repair.

CENTER CONSOLE

Components to pay attention to include:

1. Shifter assembly cover to finisher
2. A/C control unit and upper/lower cluster lid C
3. Wiring harnesses behind audio and A/C control unit

The instrument panel repair and isolation procedures also apply to the center console.

DOORS

Pay attention to the:

1. Finisher and inner panel making a slapping noise
2. Inside handle escutcheon to door finisher
3. Wiring harnesses tapping
4. Door striker out of alignment causing a popping noise on starts and stops

SQUEAK AND RATTLE TROUBLE DIAGNOSIS

Tapping or moving the components or pressing on them while driving to duplicate the conditions can isolate many of these incidents. You can usually insulate the areas with felt cloth tape or insulator foam blocks from the NISSAN Squeak and Rattle Kit (J-43980) to repair the noise.

A

TRUNK

Trunk noises are often caused by a loose jack or loose items put into the trunk by the owner. In addition look for:

B

1. Trunk lid bumpers out of adjustment
2. Trunk lid striker out of adjustment
3. The trunk lid torsion bars knocking together
4. A loose license plate or bracket

C

Most of these incidents can be repaired by adjusting, securing or insulating the item(s) or component(s) causing the noise.

D

SUNROOF/HEADLINER

Noises in the sunroof/headliner area can often be traced to one of the following:

E

1. Sunroof lid, rail, linkage or seals making a rattle or light knocking noise
2. Sunvisor shaft shaking in the holder
3. Front or rear windshield touching headliner and squeaking

F

Again, pressing on the components to stop the noise while duplicating the conditions can isolate most of these incidents. Repairs usually consist of insulating with felt cloth tape.

G

SEATS

When isolating seat noises it is important to note the position the seat is in and the load placed on the seat when the noise is present. These conditions should be duplicated when verifying and isolating the cause of the noise.

H

Cause of seat noise include:

1. Headrest rods and holders
2. A squeak between the seat pad cushion and frame
3. The rear seat back lock and bracket

IP

These noises can be isolated by moving or pressing on the suspected components while duplicating the conditions under which the noise occurs. Most of these incidents can be repaired by repositioning the component or applying urethane tape to the contact area.

J

K

UNDERHOOD

Some interior noises may be caused by components under the hood or on the engine wall. The noise is then transmitted into the passenger compartment.

L

Causes of transmitted underhood noises include:

1. Any component mounted to the engine wall
2. Components that pass through the engine wall
3. Engine wall mounts and connectors
4. Loose radiator mounting pins
5. Hood bumpers out of adjustment
6. Hood striker out of adjustment

M

These noises can be difficult to isolate since they cannot be reached from the interior of the vehicle. The best method is to secure, move or insulate one component at a time and test drive the vehicle. Also, engine RPM or load can be changed to isolate the noise. Repairs can usually be made by moving, adjusting, securing, or insulating the component causing the noise.

SQUEAK AND RATTLE TROUBLE DIAGNOSIS

Diagnostic Worksheet

EIS001KY



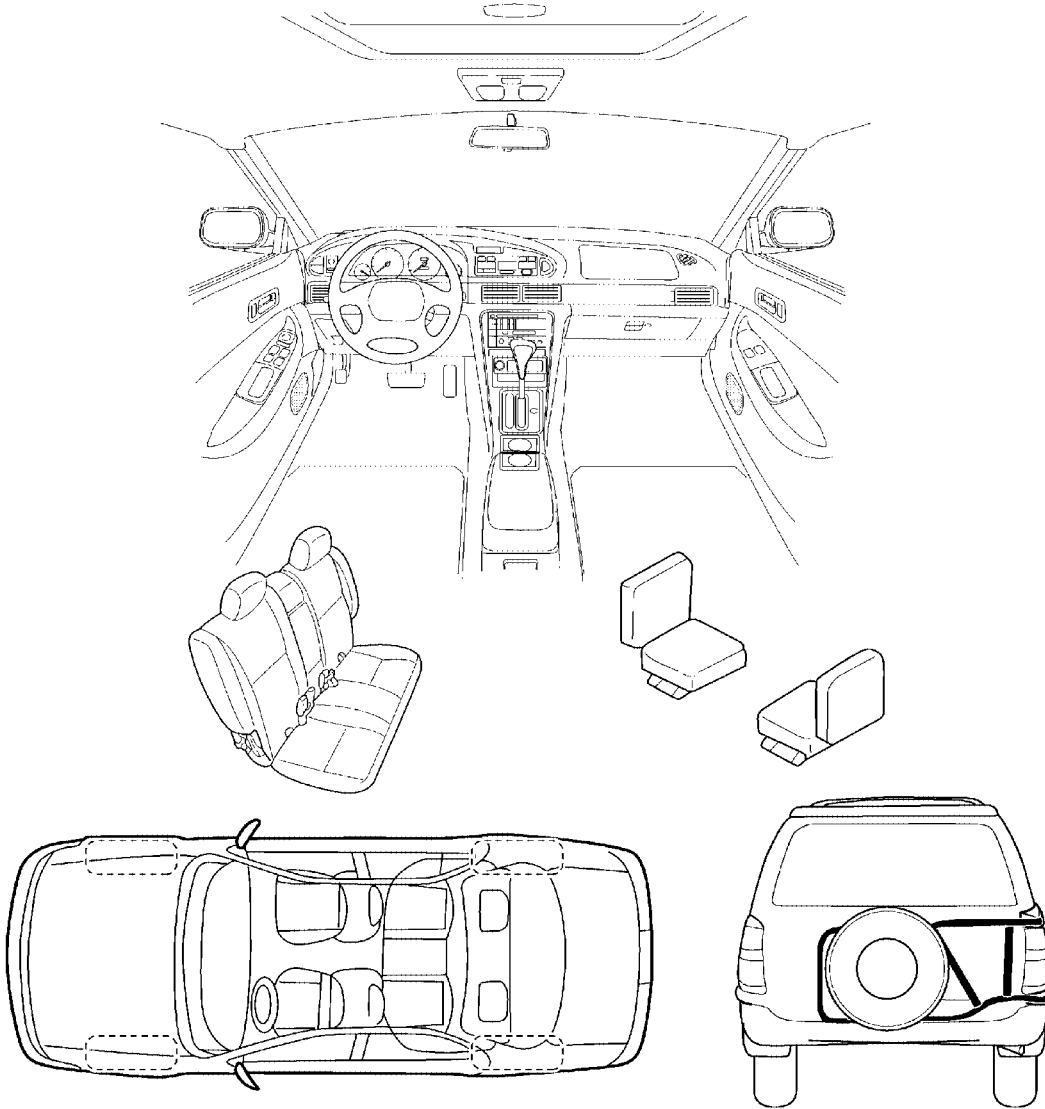
SQUEAK & RATTLE DIAGNOSTIC WORKSHEET

Dear Nissan Customer:

We are concerned about your satisfaction with your Nissan vehicle. Repairing a squeak or rattle sometimes can be very difficult. To help us fix your Nissan right the first time, please take a moment to note the area of the vehicle where the squeak or rattle occurs and under what conditions. You may be asked to take a test drive with a service advisor or technician to ensure we confirm the noise you are hearing.

I. WHERE DOES THE NOISE COME FROM? (circle the area of the vehicle)

The illustrations are for reference only, and may not reflect the actual configuration of your vehicle.



Continue to the back of the worksheet and briefly describe the location of the noise or rattle. In addition, please indicate the conditions which are present when the noise occurs.

SBT843

SQUEAK AND RATTLE TROUBLE DIAGNOSIS

SQUEAK & RATTLE DIAGNOSTIC WORKSHEET- page 2

Briefly describe the location where the noise occurs:

II. WHEN DOES IT OCCUR? (check the boxes that apply)

- | | |
|--|---|
| <input type="checkbox"/> anytime | <input type="checkbox"/> after sitting out in the sun |
| <input type="checkbox"/> 1 st time in the morning | <input type="checkbox"/> when it is raining or wet |
| <input type="checkbox"/> only when it is cold outside | <input type="checkbox"/> dry or dusty conditions |
| <input type="checkbox"/> only when it is hot outside | <input type="checkbox"/> other: _____ |

III. WHEN DRIVING:

- through driveways
- over rough roads
- over speed bumps
- only at about ____ mph
- on acceleration
- coming to a stop
- on turns : left, right or either (circle)
- with passengers or cargo
- other: _____
- after driving ____ miles or ____ minutes

IV. WHAT TYPE OF NOISE?

- squeak (like tennis shoes on a clean floor)
- creak (like walking on an old wooden floor)
- rattle (like shaking a baby rattle)
- knock (like a knock on a door)
- tick (like a clock second hand)
- thump (heavy, muffled knock noise)
- buzz (like a bumble bee)

TO BE COMPLETED BY DEALERSHIP PERSONNEL

Test Drive Notes:

	YES	NO	Initials of person performing
Vehicle test driven with customer	<input type="checkbox"/>	<input type="checkbox"/>	_____
- Noise verified on test drive	<input type="checkbox"/>	<input type="checkbox"/>	_____
- Noise source located and repaired	<input type="checkbox"/>	<input type="checkbox"/>	_____
- Follow up test drive performed to confirm repair	<input type="checkbox"/>	<input type="checkbox"/>	_____

VIN: _____ Customer Name: _____

W.O. #: _____ Date: _____

This form must be attached to Work Order

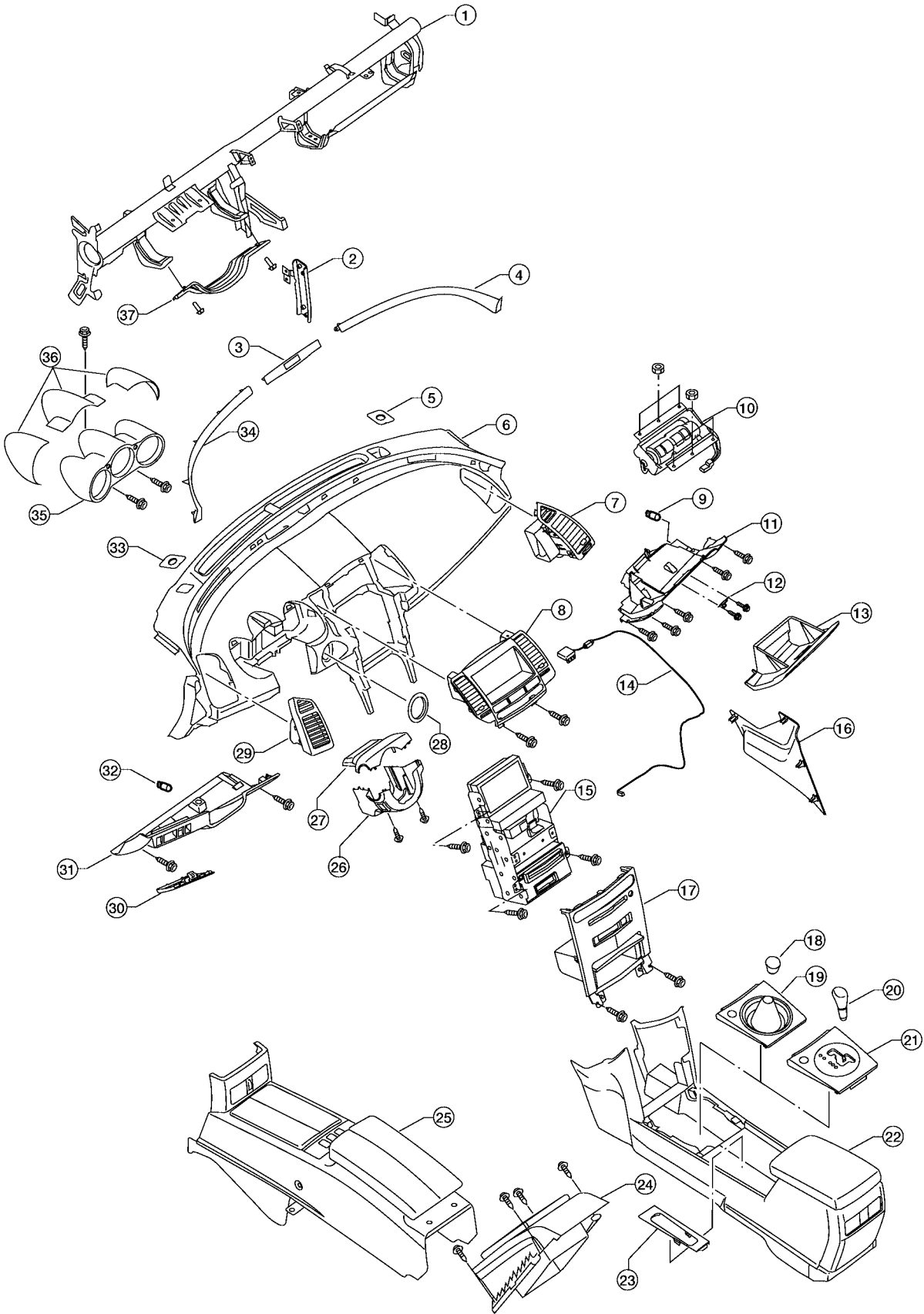
INSTRUMENT PANEL ASSEMBLY

PFP:68200

INSTRUMENT PANEL ASSEMBLY

Removal and Installation

EIS001KZ



WIIA0181E

INSTRUMENT PANEL ASSEMBLY

- | | | | |
|-----------------------------------|--|--|---|
| 1. Steering member assembly | 2. Instrument stay, driver | 3. Security light finisher | A |
| 4. Instrument panel finisher, RH | 5. Instrument mask RH, sun sensor | 6. Instrument panel | |
| 7. Side ventilator assembly, RH | 8. Cluster lid D | 9. Glove box bulb | |
| 10. Passenger front air bag | 11. Instrument passenger lower panel | 12. Glove box striker | B |
| 13. Glove box assembly | 14. GPS antenna assembly | 15. Center stack | |
| 16. Instrument lower cover, RH | 17. Cluster lid C | 18. M/T shift knob | |
| 19. M/T console finisher | 20. A/T shift knob | 21. A/T console finisher | C |
| 22. Center console assembly | 23. Parking brake lever finisher | 24. Rear upper console assembly | |
| 25. Rear console assembly | 26. Steering column cover, lower | 27. Steering column cover, upper | |
| 28. Steering lock escutcheon | 29. Side ventilator assembly, LH | 30. Fuse block cover | D |
| 31. Lower driver instrument panel | 32. Lower driver instrument panel bulb | 33. Instrument mask LH, optical sensor | |
| 34. Instrument panel finisher, LH | 35. Combination meter assembly | 36. Combination meter covers | E |
| 37. Lower knee protector, LH | | | |

1. Remove the fuse block cover.
2. Remove screws and remove lower driver instrument panel.
 - Disconnect aspirator tube and in vehicle temperature sensor.
 - Disconnect harnesses from back of lower driver instrument panel.
3. Remove footwell lamp.
4. Remove RH instrument lower cover.
5. Remove glove box assembly.
6. Remove instrument passenger lower panel.
 - Disconnect trunk switch and remove glove box lamp.

NOTE:

Steps 7, 8, 9,10, and 11 apply to 4 seater models with rear console.

7. Remove rear seat cushions and seat backs and disconnect harnesses.
8. Remove rear upper console assembly.
9. Disconnect rear console harness.
10. Remove rear console side covers.
11. Remove rear console.
12. Remove shift knob and remove A/T console finisher or M/T console finisher with boot.
 - Disconnect harnesses from bottom of console finisher.
13. Remove parking brake lever finisher.
14. Remove cluster lid C and disconnect harness for HVAC control.
15. Disconnect harnesses and remove center console assembly.
16. Remove screws and remove NAVI control unit. Disconnect harnesses from NAVI control unit.
17. Remove cluster lid D and disconnect harnesses.
18. Remove center stack assembly, disconnect harnesses and unplug antenna lead.
19. Remove escutcheon from around ignition switch.
20. Remove LH lower knee protector.
21. Pull out tilt switch on the bottom of the steering column and disconnect the harness.
22. Remove the upper and lower steering column covers.
23. Remove the combination meter covers.
24. Remove screws and remove the combination meter assembly and disconnect the harnesses.
25. Remove and disconnect the harnesses on the security lamp, sunload sensor and optical sensor.
26. Disconnect the GPS antenna.
27. Partially remove the front door welts.
28. Remove the front pillar garnishes, kicking plates and lower dash side trim.
29. Disconnect passenger front air bag and remove front air bag bolt and remove air bag. Refer to [SRS-44. "FRONT PASSENGER AIR BAG MODULE"](#) .

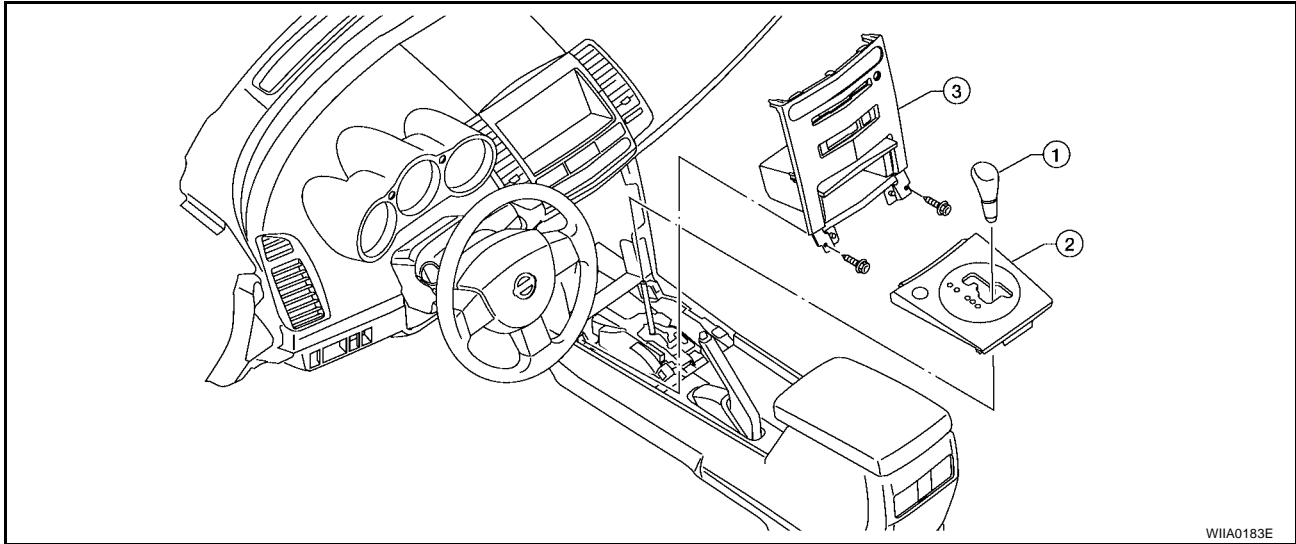
INSTRUMENT PANEL ASSEMBLY

30. Disconnect steering column harness and place aside.
31. Remove steering column cover, pinch bolt and lower steering column.
32. Remove screws and remove instrument panel. Disconnect harnesses from instrument panel prior to removing from vehicle.

Installation is in the reverse order of removal.

REMOVAL AND INSTALLATION

Cluster Lid C



WIHA0183E

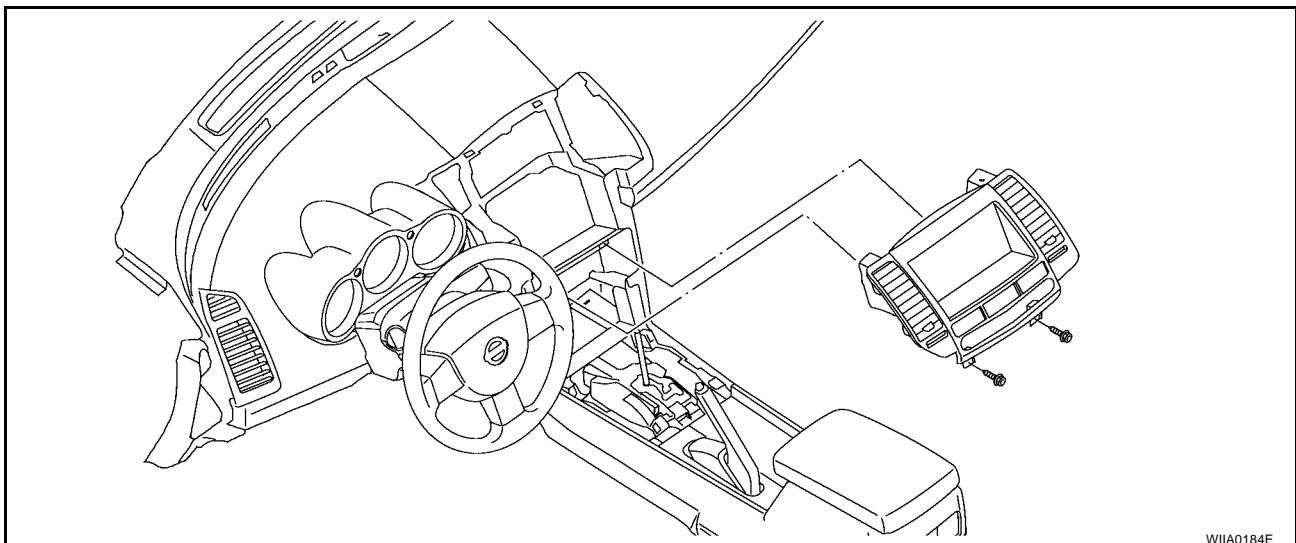
1. Remove shift knob.
2. Remove A/T console finisher.
 - Disconnect harnesses from bottom of finisher.
3. Remove screws from bottom of cluster lid C with power tool.
4. Pull lid towards rear of vehicle to release clips.
 - Disconnect electrical connector.

Installation is in the reverse order of removal.

CAUTION:

When removing and installing, place shop cloths onto surrounding parts to protect A/T or M/T finisher and center console from damage.

Cluster Lid D



WIHA0184E

1. Remove cluster lid C. Refer to [IP-12, "Cluster Lid C"](#).
2. Remove cluster lid D.
 - Remove screws using power tool.

INSTRUMENT PANEL ASSEMBLY

- Pull lid toward rear of vehicle to release clips.
- Disconnect electrical connector.

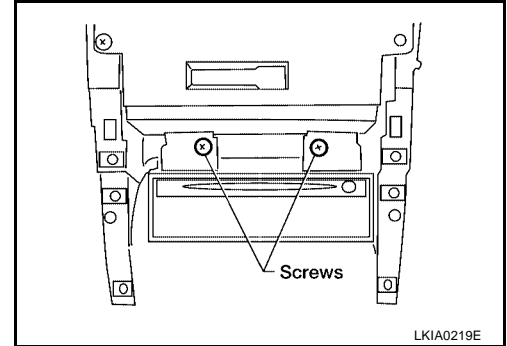
Installation is in the reverse order of removal.

CAUTION:

When removing and installing, place shop cloths onto surrounding parts to protect A/T or M/T finisher and center console from damage.

Center Stack Assembly

1. Remove DVD-map disk to avoid damage.
2. Remove center console. Refer to [IP-17, "Center Console"](#).
3. Remove cluster lid C. Refer to [IP-12, "Cluster Lid C"](#).
4. Remove cluster lid D. Refer to [IP-12, "Cluster Lid D"](#).
5. Remove screws from front of NAVI control unit.

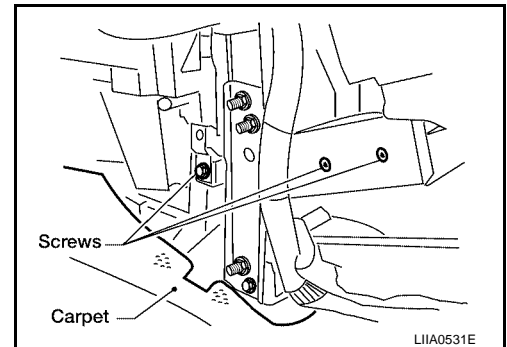


6. Pull carpet left of console aside and remove screws.
7. Disconnect NAVI control unit connectors.
8. Remove NAVI control unit.

Installation is in the reverse order of removal

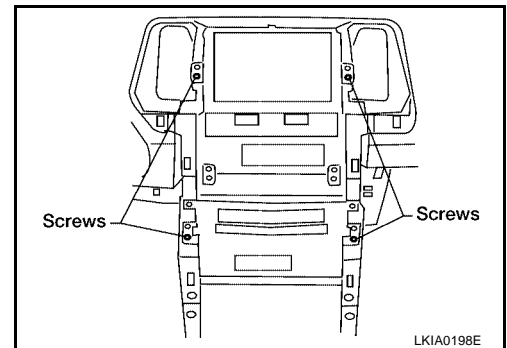
CAUTION:

Cover NAVI control unit with a cloth and avoid contact with console box bracket that may cause scratches or damage to control unit.



9. Remove screws and remove center stack.
 - Disconnect electrical harnesses.
 - Unplug GPS antenna.

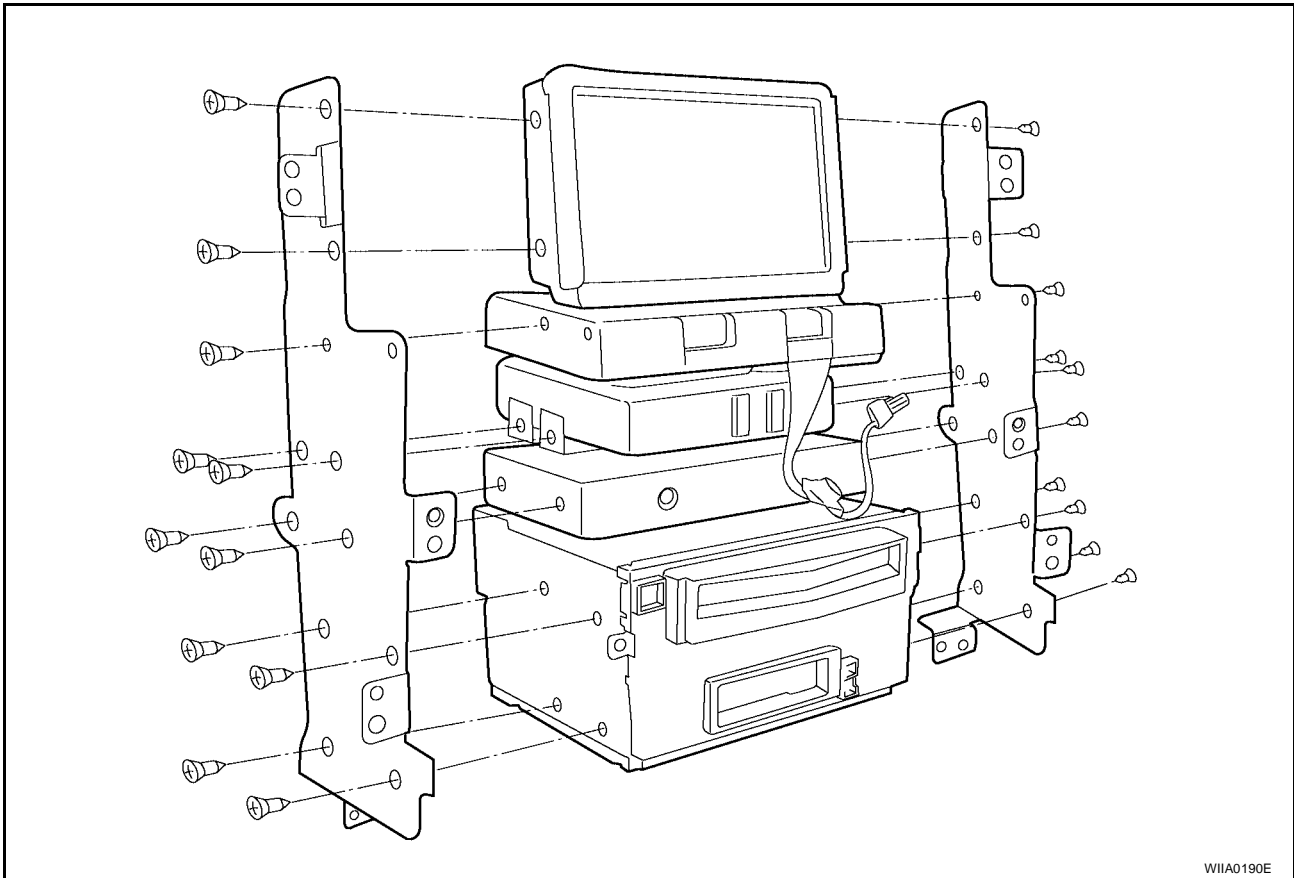
Installation is in the reverse order of removal.



A
B
C
D
E
F
G
H
IP
J
K
L
M

INSTRUMENT PANEL ASSEMBLY

Disassembly and Assembly



1. Remove screws from display unit and remove display unit from brackets.

CAUTION:

Handle the display unit carefully to avoid damage.

2. Remove screws and remove unified meter and A/C amp.
3. Remove screws and remove automatic drive positioner control unit from brackets.
4. Remove screws and remove the display control unit from brackets.

NOTE:

The display control unit is supplied only on vehicles with the navigation system.

5. Remove screws and remove audio unit from brackets.

CAUTION:

● When carrying audio unit body, do not touch internal mechanism access from cassette tape slot.

● Be careful not to allow foreign material to enter from cassette tape slot.

Assembly is in the reverse order of disassembly

CAUTION:

Use appropriate screws for each component, the screws for the audio unit are different from those the unified meter and A/C amp.

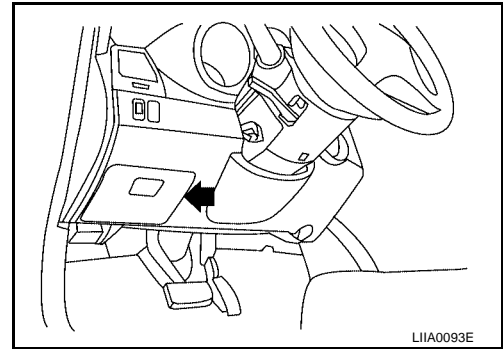
Removal and Installation

Lower Driver Instrument Panel

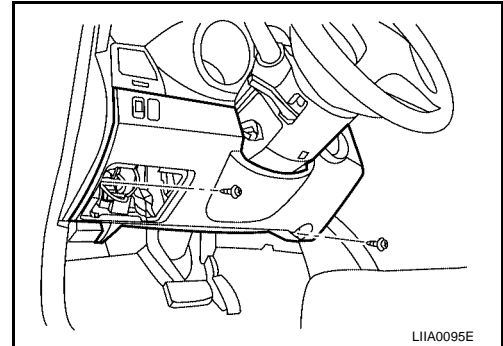
1. Remove cluster lid C. Refer to [IP-12, "Cluster Lid C"](#) .

INSTRUMENT PANEL ASSEMBLY

2. Remove fuse box cover.

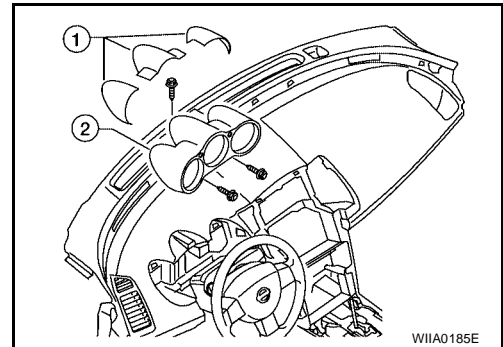


3. Remove screws using power tool, and remove lower driver instrument panel.
 - Pull to disconnect clips.
 - Disconnect aspirator tube and in vehicle temperature sensor.
 - Disconnect harnesses from back of lower driver instrument panel.



Combination Meter

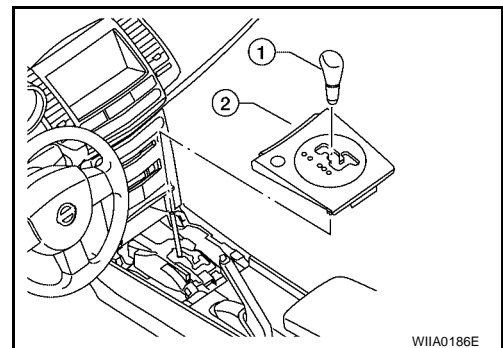
1. Remove the combination meter covers.
2. Remove screws using power tool and remove the combination meter assembly.
 - Disconnect electrical connectors.



A/T Finisher

1. Remove shift knob
2. Pull up to release clips and remove A/T finisher.
 - Disconnect harnesses.

Installation is in the reverse order of removal.



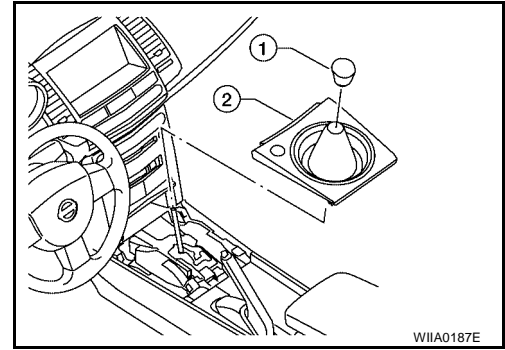
A
B
C
D
E
F
G
H
IP
J
K
L
M

INSTRUMENT PANEL ASSEMBLY

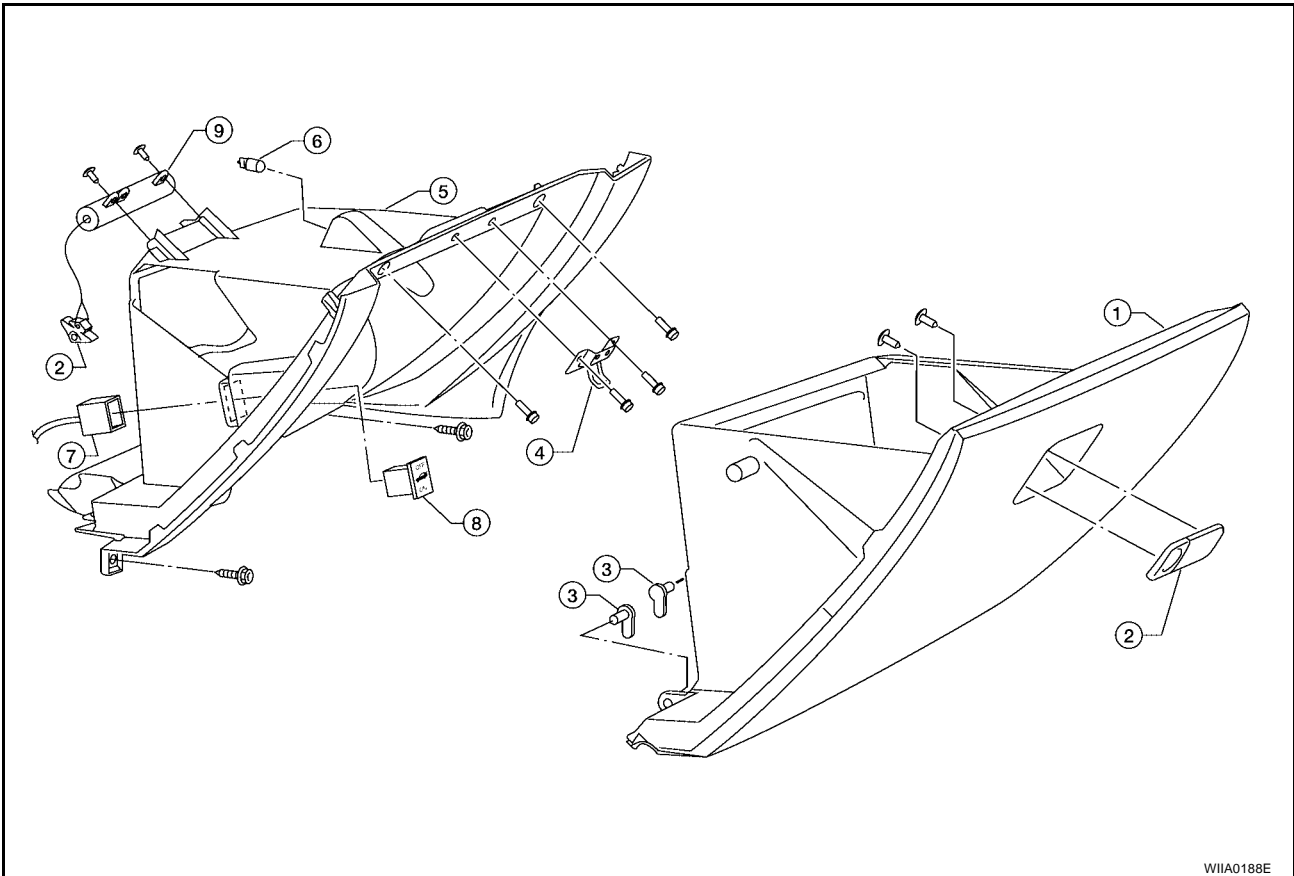
M/T Finisher

1. Remove shift knob.
2. Pull up to release clips and remove M/T finisher.
 - Disconnect harnesses.

Installation is in the reverse order of removal.



Instrument Passenger Lower Panel and Glove Box

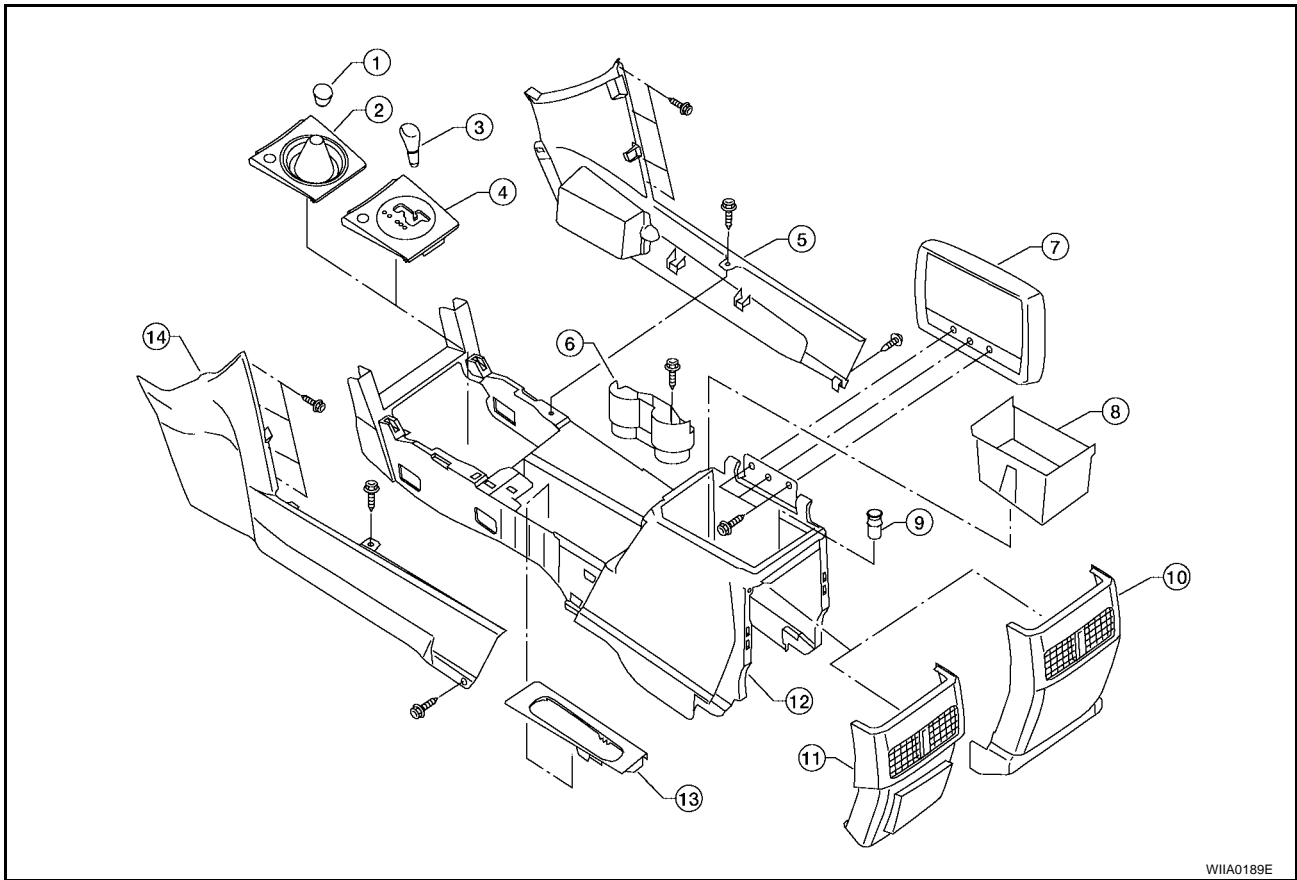


1. Remove glove box door.
 - Remove damper clip from glove box door.
2. Remove screws and remove glove box knob.
3. Remove glove box hinges.
4. Remove screws from glove box striker and glove box using power tool.
5. Remove screws and remove instrument passenger lower panel.
6. Disconnect glove box lamp harness.
7. Disconnect harness from trunk switch.
8. Remove trunk switch.
9. Remove screws and remove damper from back of instrument passenger lower panel.

INSTRUMENT PANEL ASSEMBLY

Disassembly and Assembly CENTER CONSOLE

EIS001L0



WI1A0189E

- | | | |
|--|--|-------------------------|
| 1. M/T shift knob | 2. M/t console finisher | 3. A/T shift knob |
| 4. A/T console finisher | 5. Console cover, RH | 6. Cup holder insert |
| 7. Console lid assembly | 8. Console rear pocket | 9. Power point assembly |
| 10. Rear finisher assembly, 5 seat model | 11. Rear finisher assembly, 4 seat model | 12. Center console |
| 13. Parking brake lever finisher | 14. Console cover, LH | |

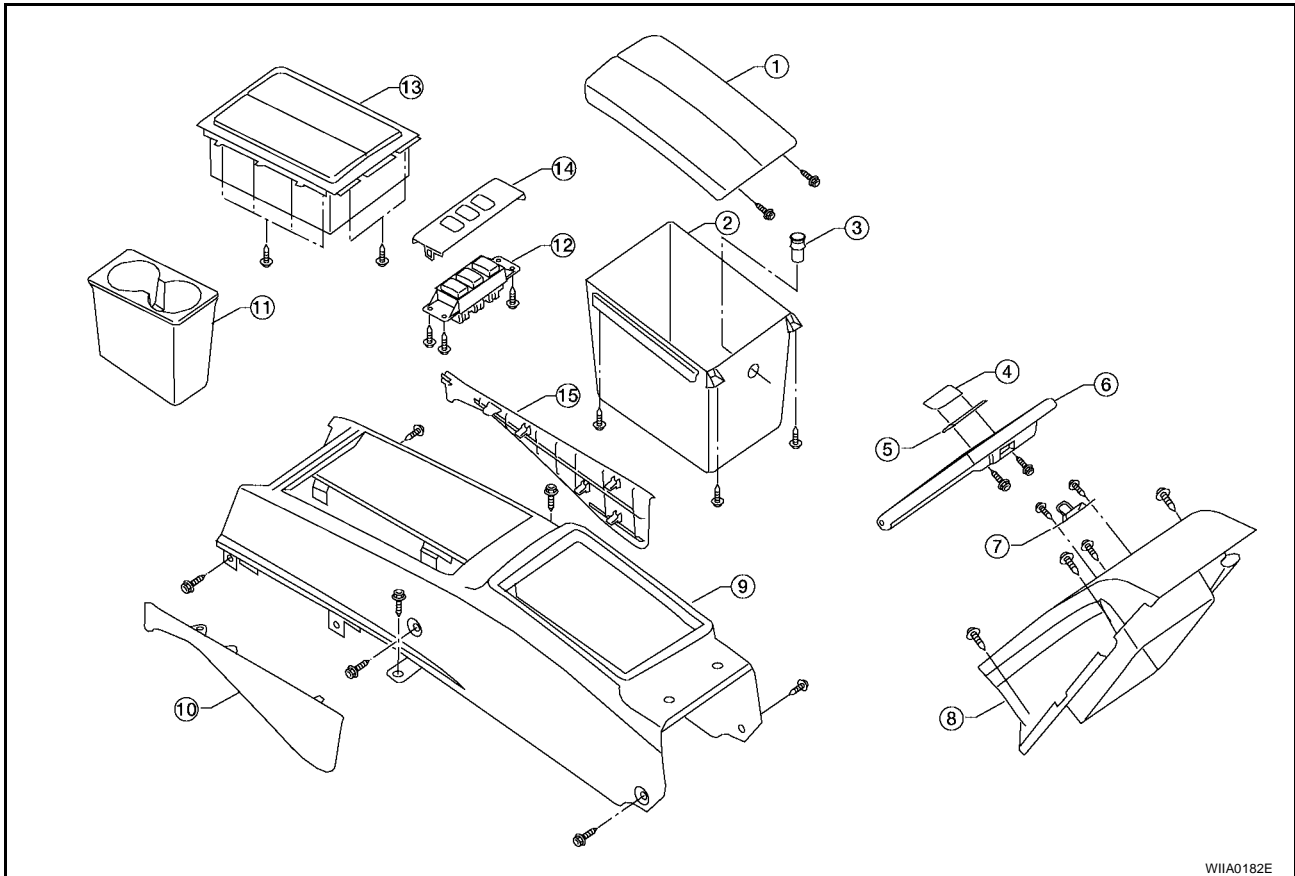
1. On 4 seat models, rear console assembly must be removed prior to removing center console. Refer to [IP-18, "Rear Console"](#).
2. Remove RH instrument lower cover. Refer to [IP-10, "INSTRUMENT PANEL ASSEMBLY"](#).
3. Remove instrument passenger lower panel and glove box assembly. Refer to [IP-10, "INSTRUMENT PANEL ASSEMBLY"](#).
4. Remove lower driver instrument panel. Refer to [IP-10, "INSTRUMENT PANEL ASSEMBLY"](#).
5. Remove shift knob and M/T or A/T console finisher.
 - Disconnect illumination bulb and hazard switch harnesses.
6. Remove cluster lid C. Refer to [IP-12, "Cluster Lid C"](#).
7. Pull up parking brake lever and remove parking brake finisher from center console.
8. Remove screws from center console.
 - Disconnect electrical harnesses.
9. Move front seats forward and remove center console assembly.
10. Remove cup holder insert from cup holder assembly
11. Disconnect clips, remove screw on each side and remove RH and LH console covers.
12. Remove console rear pocket.
13. Remove power point assembly.
14. Remove screws from hinge plate and remove lid assembly from console box.
15. Release clips and remove rear finisher assembly.

INSTRUMENT PANEL ASSEMBLY

Assembly is in the reverse order of disassembly.

Disassembly and Assembly REAR CONSOLE

EIS00104



- | | | |
|------------------------------|--------------------------|-----------------------------------|
| 1. Rear console lid assembly | 2. Rear console tray | 3. Power point assembly |
| 4. Lock assembly | 5. Key cylinder | 6. Rear pass through lid assembly |
| 7. Striker | 8. Pass through assembly | 9. Rear console |
| 10. Lower side cover, LH | 11. Cup holder assembly | 12. Switch assembly |
| 13. Front lid assembly | 14. Switch finisher | 15. Lower side cover, RH |

1. Remove rear seat cushions and disconnect harnesses. Refer to [SE-108, "REAR SEAT"](#) .
 2. Remove rear seat backs and disconnect harnesses. Refer to [SE-108, "REAR SEAT"](#) .
 3. Remove screws and remove pass through assembly.
 4. Release clips and remove RH and LH lower side covers.
 5. Remove screws, disconnect harness and remove rear console assembly.
 6. Remove cup holder assembly.
 7. Remove screws and remove rear console lid assembly.
 8. Disconnect harnesses and remove switch finisher and switch assembly.
 - Remove screws to separate switch finisher and switch assembly.
 9. Remove screws and remove rear console tray.
 - Remove power point assembly.
 10. Remove screws and remove front lid assembly.
 11. Remove screws and remove striker from rear pass through assembly panel.
 12. Remove rear pass through lid assembly.
 13. Remove screws and remove lock assembly and key cylinder.
- Assembly is in the reverse order of disassembly.