

SECTION **EX**
EXHAUST SYSTEM

A
EX
C
D
E
F
G
H
I
J
K
L
M
N
O
P

CONTENTS

PRECAUTION	2	EXHAUST SYSTEM	4
PRECAUTIONS	2	Inspection	4
Removal and Installation	2	REMOVAL AND INSTALLATION	5
PREPARATION	3	EXHAUST SYSTEM	5
PREPARATION	3	Exploded View	5
Commercial Service Tool	3	Removal and Installation	6
PERIODIC MAINTENANCE	4	Inspection	6

PRECAUTIONS

< PRECAUTION >

PRECAUTION

PRECAUTIONS

Removal and Installation

INFOID:000000007493650

CAUTION:

- Be sure to use genuine exhaust system parts or equivalents which are specially designed for heat resistance, corrosion resistance, and shape.
- Perform the operation with the exhaust system fully cooled down because the system will be hot just after engine stops.
- Be careful not to cut your hand on the heat insulator edge.

PREPARATION

< PREPARATION >

PREPARATION

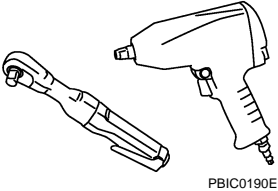
PREPARATION

Commercial Service Tool

INFOID:000000007493651

A

EX

Tool name	Description
<p data-bbox="162 411 272 436">Power tool</p>  <p data-bbox="828 630 901 646">PBIC0190E</p>	<p data-bbox="1015 411 1263 436">Loosening nuts and bolts</p>

C

D

E

F

G

H

I

J

K

L

M

N

O

P

EXHAUST SYSTEM

< PERIODIC MAINTENANCE >

PERIODIC MAINTENANCE

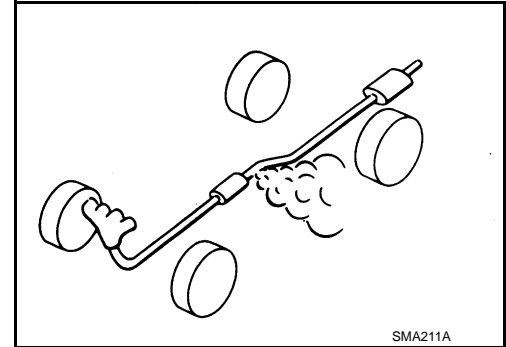
EXHAUST SYSTEM

Inspection

INFOID:000000007493652

Check exhaust pipes, muffler, and mounting for improper attachment, leakage, cracks, damage or deterioration.

- If anything is found, repair or replace damaged parts.



EXHAUST SYSTEM

< REMOVAL AND INSTALLATION >

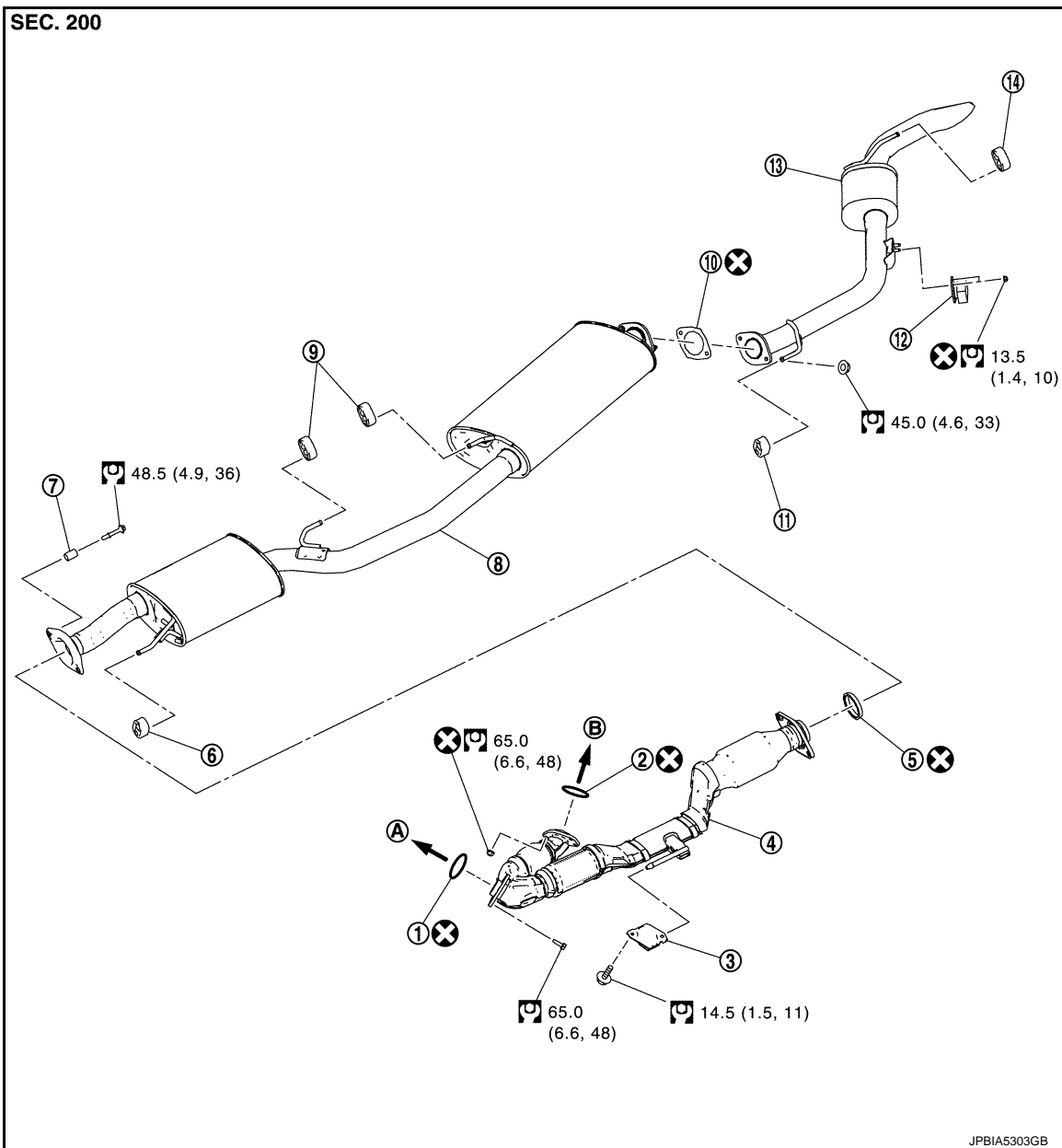
REMOVAL AND INSTALLATION

EXHAUST SYSTEM

Exploded View

INFOID:000000007493653

EX



- | | | |
|-----------------------|---------------------|--------------------|
| 1. Gasket | 2. Gasket | 3. Mounting rubber |
| 4. Exhaust front tube | 5. Seal bearing | 6. Mounting rubber |
| 7. Spring | 8. Center muffler | 9. Mounting rubber |
| 10. Gasket | 11. Mounting rubber | 12. Dynamic damper |
| 13. Rear muffler | 14. Mounting rubber | |
- A. To exhaust manifold (bank2) B. To exhaust manifold (bank1)

⊗ : Always replace after every disassembly.

⊞ : N·m (kg-m, ft-lb)

EXHAUST SYSTEM

< REMOVAL AND INSTALLATION >

Removal and Installation

INFOID:000000007493654

REMOVAL

Disconnect each joint and mounting using power tool.

INSTALLATION

Note the following, and install in the reverse order of removal.

CAUTION:

- Always replace exhaust tube gaskets with new ones when reassembling.
- If heat insulator is badly deformed, repair or replace it. If deposits such as mud pile up on the heat insulator, remove them.
- When installing heat insulator avoid large gaps or interference between heat insulator and each exhaust pipe.
- Remove deposits from the sealing surface of each connection. Connect them securely to avoid gases leakage.
- Temporarily tighten mounting nuts and bolts. Check each part for unusual interference, and then tighten them to the specified torque.
- When installing each mounting rubber, avoid twisting or unusual extension in up/down and right/left directions.

Exhaust Front Tube to Center Muffler

1. Securely insert seal bearing (2) into exhaust front tube (1) side in the direction shown in the figure.

- 3 : Spring
- 4 : Bolt
- 5 : Center muffler

CAUTION:

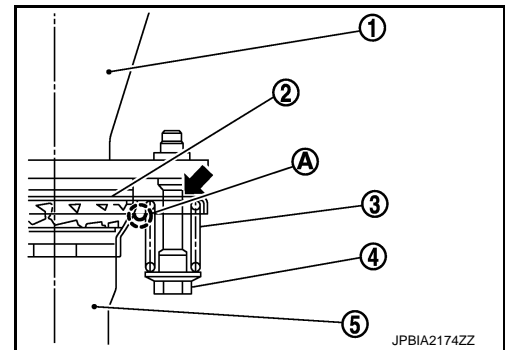
Be careful not to damage seal bearing surface when installing.

2. With spring, tighten bolt.

CAUTION:

- Ensure springs are seated correctly on the flange and not sitting on (A).
- Be careful that bolt does not interfere with mounting hole of center muffler (←).

3. After installing, check that bolt does not interfere with mounting hole of center muffler.



Inspection

INFOID:000000007493655

INSPECTION AFTER INSTALLATION

- Check clearance between tail tube and rear bumper is even.
- With engine running, check exhaust tube joints for gas leakage and unusual noises.
- Check to ensure that mounting brackets and mounting rubbers are installed properly and free from undue stress. Improper installation could result in excessive noise and vibration.