

SECTION VTL
VENTILATION SYSTEM

A
B
C

CONTENTS

SYSTEM DESCRIPTION	3	Exploded View	10	F
SWITCHES AND THEIR CONTROL FUNCTION	3	CENTER VENTILATOR GRILLE	11	G
System Description	3	CENTER VENTILATOR GRILLE : Removal and Installation	11	
AIR DISTRIBUTION	4	CENTER VENTILATOR DUCT	11	H
System Description	4	CENTER VENTILATOR DUCT : Removal and Installation	12	
PRECAUTION	5	SIDE VENTILATOR GRILLE	12	VTL
PRECAUTIONS	5	SIDE VENTILATOR GRILLE : Removal and Installation	12	
FOR USA AND CANADA	5	SIDE VENTILATOR DUCT	12	J
FOR USA AND CANADA : Precaution for Supplemental Restraint System (SRS) "AIR BAG" and "SEAT BELT PRE-TENSIONER"	5	SIDE VENTILATOR DUCT : Removal and Installation	12	
FOR USA AND CANADA : Precaution Necessary for Steering Wheel Rotation After Battery Disconnect	5	SIDE DEFROSTER GRILLE	13	K
FOR MEXICO	6	SIDE DEFROSTER GRILLE : Removal and Installation	13	
FOR MEXICO : Precaution for Supplemental Restraint System (SRS) "AIR BAG" and "SEAT BELT PRE-TENSIONER"	6	SIDE DEFROSTER DUCT	13	L
FOR MEXICO : Precaution Necessary for Steering Wheel Rotation After Battery Disconnect	6	SIDE DEFROSTER DUCT : Removal and Installation	13	
PREPARATION	8	FRONT DEFROSTER GRILLE	14	M
PREPARATION	8	FRONT DEFROSTER GRILLE : Removal and Installation	14	
Commercial Service Tool	8	FRONT FOOT DUCT	14	N
PERIODIC MAINTENANCE	9	FRONT FOOT DUCT : Removal and Installation	14	
IN-CABIN MICROFILTER	9	REAR FOOT DUCT 1	15	O
Exploded View	9	REAR FOOT DUCT 1 : Removal and Installation	15	
Removal and Installation	9	REAR FOOT DUCT 2	15	P
Replacement	9	REAR FOOT DUCT 2 : Removal and Installation	15	
REMOVAL AND INSTALLATION	10	REAR FOOT DUCT 3	15	
DUCT AND GRILLE	10	REAR FOOT DUCT 3 : Removal and Installation	15	
		BLOWER MOTOR	16	
		Exploded View	16	

Removal and Installation	16	Exploded View	17
FAN CONTROL AMPLIFIER	17	Removal and Installation	17

SWITCHES AND THEIR CONTROL FUNCTION

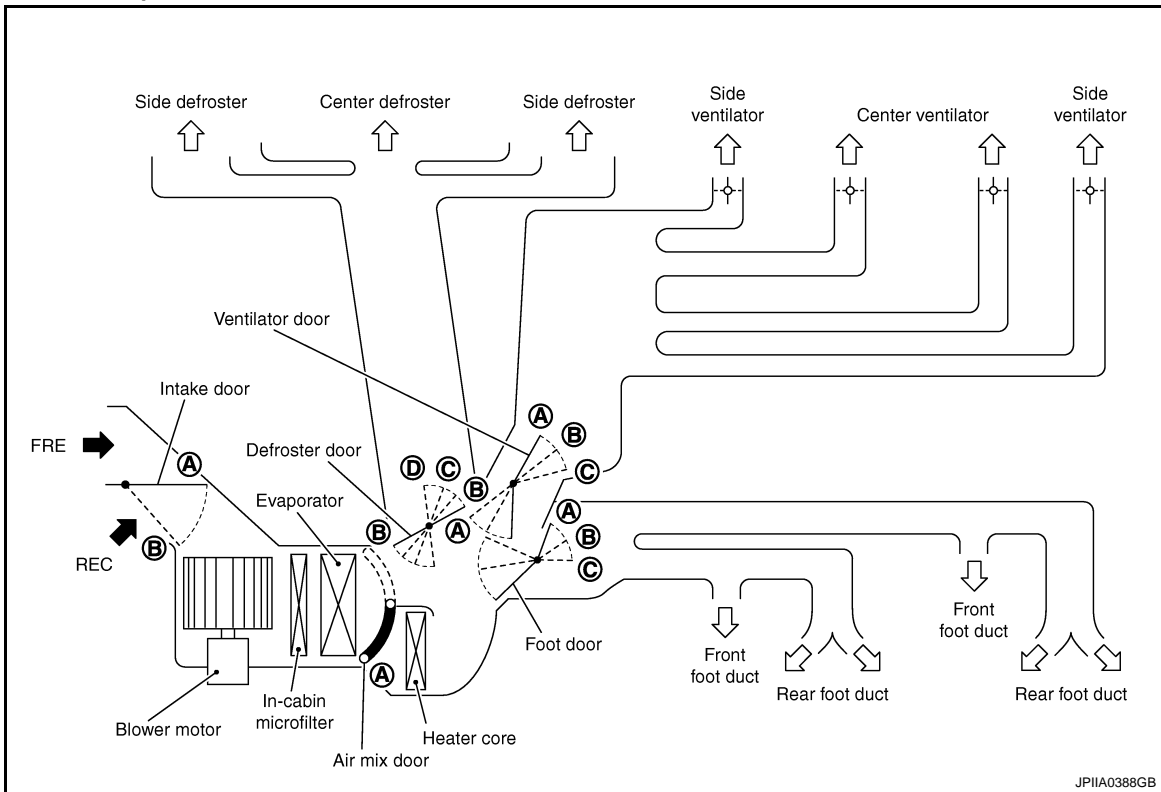
< SYSTEM DESCRIPTION >

SYSTEM DESCRIPTION

SWITCHES AND THEIR CONTROL FUNCTION

System Description

INFOID:000000005254136



JP11A0388GB

NOTE:

Ventilator door has center ventilator openings and side ventilator openings, side ventilator opening cannot be completely closed.

Door	Position or switch	Mode control dial							Intake switch		Temperature control dial			
		MAX A/C	VENT	B/L	FOOT	FOOT2	D/F	D/F2	DEF	ON	OFF	Full cold ↔ Full hot		
		MAX A/C				—		—						
Ventilator door	(A)	(A)	(B)	(C)	(C)	(C)	(C)	(C)	—	—	—			
Foot door	(A)	(A)	(B)	(C)	(C)	(B)	(B)	(A)	—	—	—			
Defroster door	(A)	(A)	(A)	(B)	(B-C)	(C)	(C-D)	(D)	—	—	—			
Intake door	(A)	—							(B)	(A)	(B)	—		
Air mix door	—							—		—		(A)	—	(B)

JP11A0390GB

AIR DISTRIBUTION

< SYSTEM DESCRIPTION >

AIR DISTRIBUTION

System Description

INFOID:000000005254137

WITHOUT REAR FOOT DUCT

Discharge air flow			
Mode door position	Air outlet/distribution		
	VENT	FOOT	DEF
	100%	—	—
	63%	37%	—
	13%	63%	24%
	12%	41%	47%
	18%	—	82%

JPIIA0387GB

WITH REAR FOOT DUCT

Discharge air flow				
Mode door position	Air outlet/distribution			
	VENT	FOOT		DEF
		Front	Rear	
	100%	—	—	—
	60%	26%	14%	—
	13%	42%	24%	21%
	12%	28%	16%	44%
	18%	—	—	82%

JPIIA0386GB

PRECAUTIONS

< PRECAUTION >

PRECAUTION

PRECAUTIONS

FOR USA AND CANADA

FOR USA AND CANADA : Precaution for Supplemental Restraint System (SRS) "AIR BAG" and "SEAT BELT PRE-TENSIONER"

INFOID:000000005254138

The Supplemental Restraint System such as "AIR BAG" and "SEAT BELT PRE-TENSIONER", used along with a front seat belt, helps to reduce the risk or severity of injury to the driver and front passenger for certain types of collision. This system includes seat belt switch inputs and dual stage front air bag modules. The SRS system uses the seat belt switches to determine the front air bag deployment, and may only deploy one front air bag, depending on the severity of a collision and whether the front occupants are belted or unbelted. Information necessary to service the system safely is included in the "SRS AIR BAG" and "SEAT BELT" of this Service Manual.

WARNING:

- To avoid rendering the SRS inoperative, which could increase the risk of personal injury or death in the event of a collision which would result in air bag inflation, all maintenance must be performed by an authorized NISSAN/INFINITI dealer.
- Improper maintenance, including incorrect removal and installation of the SRS, can lead to personal injury caused by unintentional activation of the system. For removal of Spiral Cable and Air Bag Module, see the "SRS AIR BAG".
- Do not use electrical test equipment on any circuit related to the SRS unless instructed to in this Service Manual. SRS wiring harnesses can be identified by yellow and/or orange harnesses or harness connectors.

PRECAUTIONS WHEN USING POWER TOOLS (AIR OR ELECTRIC) AND HAMMERS

WARNING:

- When working near the Air Bag Diagnosis Sensor Unit or other Air Bag System sensors with the ignition ON or engine running, DO NOT use air or electric power tools or strike near the sensor(s) with a hammer. Heavy vibration could activate the sensor(s) and deploy the air bag(s), possibly causing serious injury.
- When using air or electric power tools or hammers, always switch the ignition OFF, disconnect the battery, and wait at least 3 minutes before performing any service.

FOR USA AND CANADA : Precaution Necessary for Steering Wheel Rotation After Battery Disconnect

INFOID:000000005254139

NOTE:

- This Procedure is applied only to models with Intelligent Key system and NVIS/IVIS (NISSAN/INFINITI VEHICLE IMMOBILIZER SYSTEM - NATS).
- Remove and install all control units after disconnecting both battery cables with the ignition knob in the "LOCK" position.
- Always use CONSULT-III to perform self-diagnosis as a part of each function inspection after finishing work. If DTC is detected, perform trouble diagnosis according to self-diagnostic results.

For models equipped with the Intelligent Key system and NVIS/IVIS, an electrically controlled steering lock mechanism is adopted on the key cylinder.

For this reason, if the battery is disconnected or if the battery is discharged, the steering wheel will lock and steering wheel rotation will become impossible.

If steering wheel rotation is required when battery power is interrupted, follow the procedure below before starting the repair operation.

OPERATION PROCEDURE

1. Connect both battery cables.

NOTE:

Supply power using jumper cables if battery is discharged.

2. Use the Intelligent Key or mechanical key to turn the ignition switch to the "ACC" position. At this time, the steering lock will be released.

A
B
C
D
E
F
G
H
VTL
J
K
L
M
N
O
P

PRECAUTIONS

< PRECAUTION >

3. Disconnect both battery cables. The steering lock will remain released and the steering wheel can be rotated.
4. Perform the necessary repair operation.
5. When the repair work is completed, return the ignition switch to the "LOCK" position before connecting the battery cables. (At this time, the steering lock mechanism will engage.)
6. Perform a self-diagnosis check of all control units using CONSULT-III.

FOR MEXICO

FOR MEXICO : Precaution for Supplemental Restraint System (SRS) "AIR BAG" and "SEAT BELT PRE-TENSIONER"

INFOID:000000005254140

The Supplemental Restraint System such as "AIR BAG" and "SEAT BELT PRE-TENSIONER", used along with a front seat belt, helps to reduce the risk or severity of injury to the driver and front passenger for certain types of collision. Information necessary to service the system safely is included in the "SRS AIR BAG" and "SEAT BELT" of this Service Manual.

WARNING:

- To avoid rendering the SRS inoperative, which could increase the risk of personal injury or death in the event of a collision which would result in air bag inflation, all maintenance must be performed by an authorized NISSAN/INFINITI dealer.
- Improper maintenance, including incorrect removal and installation of the SRS, can lead to personal injury caused by unintentional activation of the system. For removal of Spiral Cable and Air Bag Module, see the "SRS AIR BAG".
- Do not use electrical test equipment on any circuit related to the SRS unless instructed to in this Service Manual. SRS wiring harnesses can be identified by yellow and/or orange harnesses or harness connectors.

PRECAUTIONS WHEN USING POWER TOOLS (AIR OR ELECTRIC) AND HAMMERS

WARNING:

- When working near the Air Bag Diagnosis Sensor Unit or other Air Bag System sensors with the ignition ON or engine running, DO NOT use air or electric power tools or strike near the sensor(s) with a hammer. Heavy vibration could activate the sensor(s) and deploy the air bag(s), possibly causing serious injury.
- When using air or electric power tools or hammers, always switch the ignition OFF, disconnect the battery, and wait at least 3 minutes before performing any service.

FOR MEXICO : Precaution Necessary for Steering Wheel Rotation After Battery Disconnect

INFOID:000000005254141

NOTE:

- This Procedure is applied only to models with Intelligent Key system and NVIS/IVIS (NISSAN/INFINITI VEHICLE IMMOBILIZER SYSTEM - NATS).
- Remove and install all control units after disconnecting both battery cables with the ignition knob in the "LOCK" position.
- Always use CONSULT-III to perform self-diagnosis as a part of each function inspection after finishing work. If DTC is detected, perform trouble diagnosis according to self-diagnostic results.

For models equipped with the Intelligent Key system and NVIS/IVIS, an electrically controlled steering lock mechanism is adopted on the key cylinder.

For this reason, if the battery is disconnected or if the battery is discharged, the steering wheel will lock and steering wheel rotation will become impossible.

If steering wheel rotation is required when battery power is interrupted, follow the procedure below before starting the repair operation.

OPERATION PROCEDURE

1. Connect both battery cables.

NOTE:

Supply power using jumper cables if battery is discharged.

2. Use the Intelligent Key or mechanical key to turn the ignition switch to the "ACC" position. At this time, the steering lock will be released.

PRECAUTIONS

< PRECAUTION >

3. Disconnect both battery cables. The steering lock will remain released and the steering wheel can be rotated.
4. Perform the necessary repair operation.
5. When the repair work is completed, return the ignition switch to the "LOCK" position before connecting the battery cables. (At this time, the steering lock mechanism will engage.)
6. Perform a self-diagnosis check of all control units using CONSULT-III.

A

B

C

D

E

F

G

H

VTL

J

K

L

M

N

O

P

PREPARATION

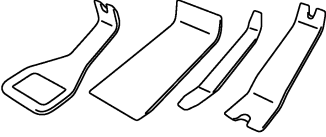
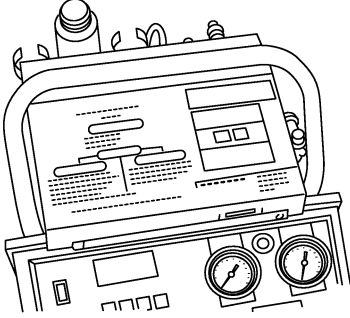
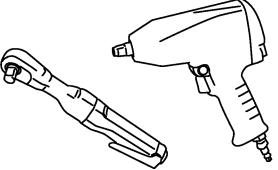
< PREPARATION >

PREPARATION

PREPARATION

Commercial Service Tool

INFOID:000000005254142

Tool name	Description
<p>Remover tool</p>  <p>PIIB7923J</p>	<p>Remove clips, pawls, metal clips</p>
<p>Refrigerant identifier equipment</p>  <p>RJIA0197E</p>	<p>Checking for refrigerant purity and system contamination</p>
<p>Power tool</p>  <p>PBIC0190E</p>	<p>For loosening bolts and nuts</p>

IN-CABIN MICROFILTER

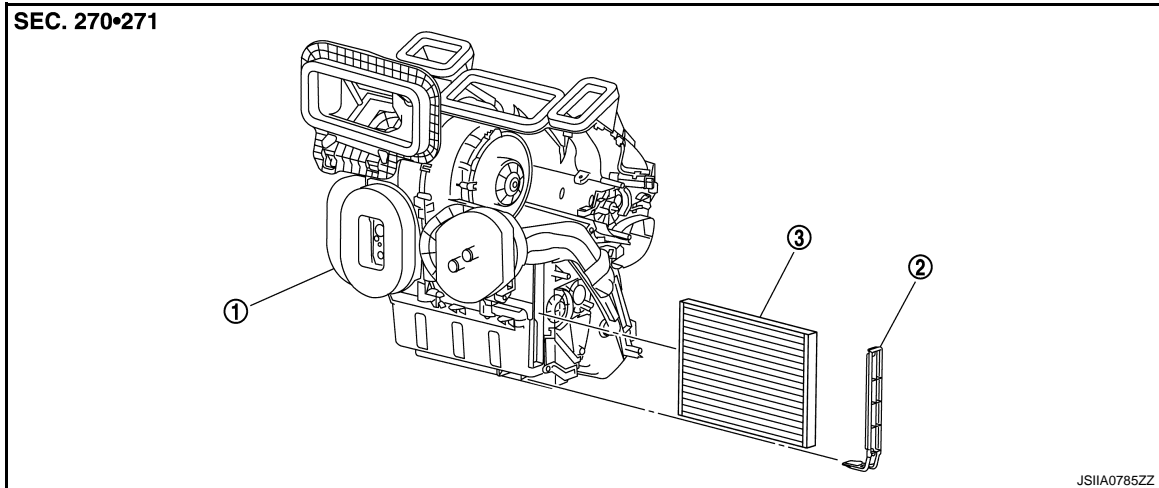
< PERIODIC MAINTENANCE >

PERIODIC MAINTENANCE

IN-CABIN MICROFILTER

Exploded View

INFOID:000000005254143



1. A/C unit assembly

2. Filter cover

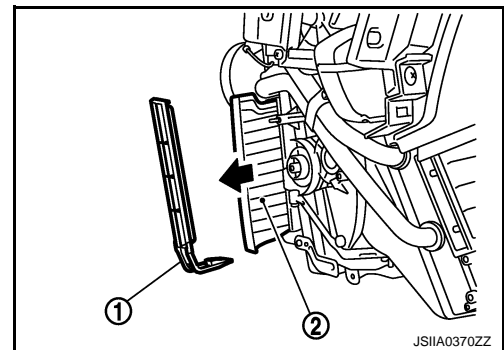
3. In-cabin microfilter

Removal and Installation

INFOID:000000005254144

REMOVAL

1. Remove instrument driver lower cover. Refer to [IP-12, "Exploded View"](#).
2. Remove accelerator pedal assembly. Refer to [ACC-4, "Exploded View"](#).
3. Remove filter cover (1), and then remove in-cabin microfilter (2).



INSTALLATION

Installation is basically the reverse order of removal.

CAUTION:

- If the filter is deformed/damaged when removing, replace it with a new one. Deformed/damaged filter may deteriorate the duct collecting performance.
- When installing, handle the filter with extreme care to avoid deforming/damaging.

Replacement

INFOID:000000005254145

Replace in-cabin microfilter.

Refer to [MA-8, "FOR NORTH AMERICA : Schedule 1"](#) (FOR NORTH AMERICA), [MA-10, "FOR NORTH AMERICA : Schedule 2"](#) (FOR NORTH AMERICA) or [MA-11, "FOR MEXICO : Periodic Maintenance"](#) (FOR MEXICO).

Affix a caution label inside the glove box when replacing filter.

A
B
C
D
E
F
G
H
J
K
L
M
N
O
P

VTL

DUCT AND GRILLE

< REMOVAL AND INSTALLATION >

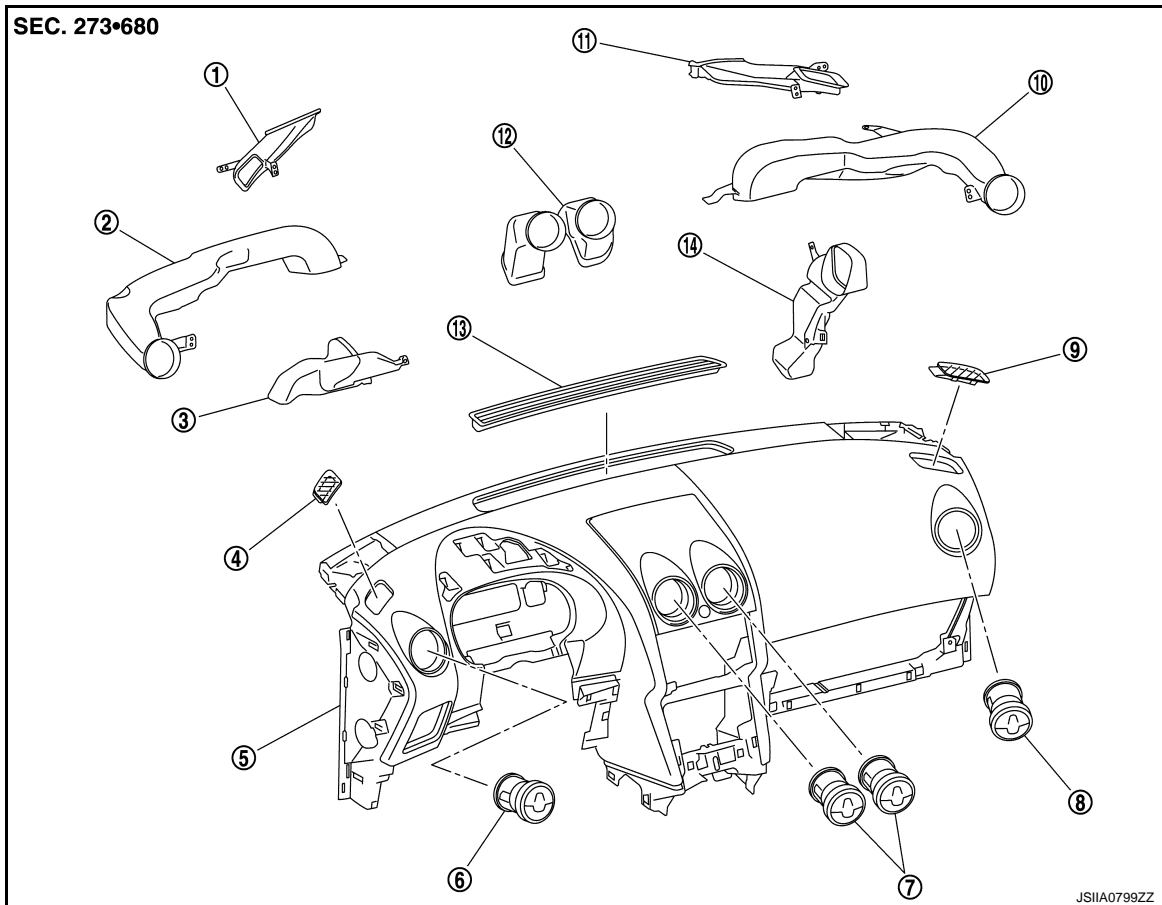
REMOVAL AND INSTALLATION

DUCT AND GRILLE

Exploded View

INFOID:000000005254146

FRONT

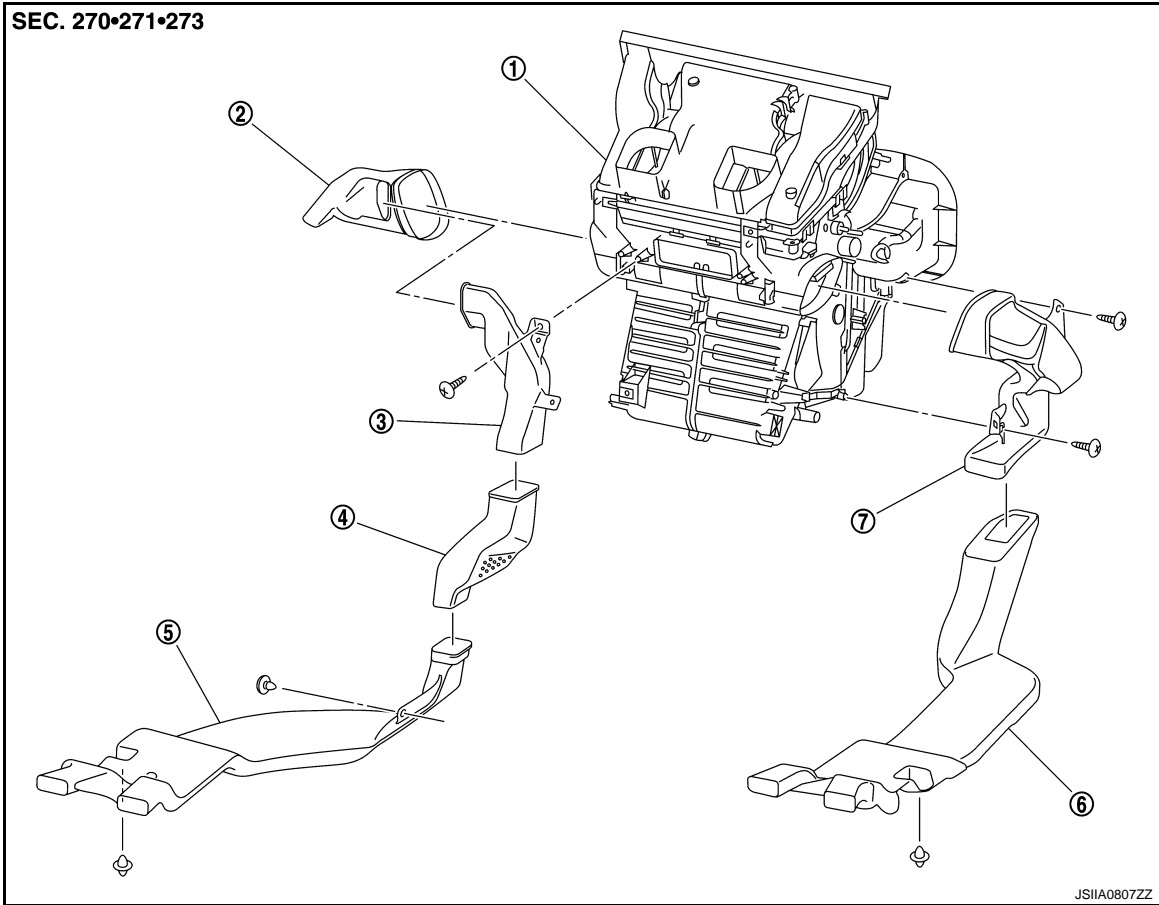


- | | | |
|-----------------------------|------------------------------|------------------------------|
| 1. Side defroster duct LH | 2. Side ventilator duct LH | 3. Front foot duct LH |
| 4. Side defroster grille LH | 5. Instrument panel | 6. Side ventilator grille LH |
| 7. Center ventilator grille | 8. Side ventilator grille RH | 9. Side defroster grille RH |
| 10. Side ventilator duct RH | 11. Side defroster duct RH | 12. Center ventilator duct |
| 13. Front defroster grille | 14. Front foot duct RH | |

REAR

DUCT AND GRILLE

< REMOVAL AND INSTALLATION >



- | | | |
|-----------------------|------------------------|------------------------|
| 1. A/C unit assembly | 2. Front foot duct LH | 3. Rear foot duct 1 |
| 4. Rear foot duct 2 | 5. Rear foot duct 3 LH | 6. Rear foot duct 3 RH |
| 7. Front foot duct RH | | |

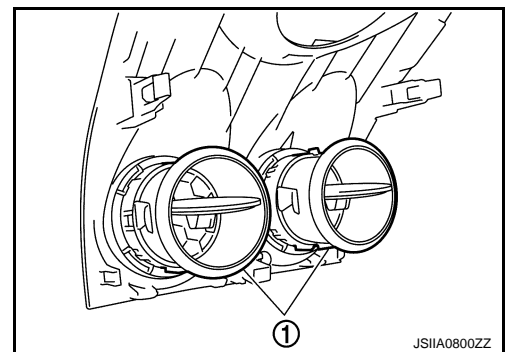
CENTER VENTILATOR GRILLE

CENTER VENTILATOR GRILLE : Removal and Installation

INFOID:000000005254147

REMOVAL

1. Remove cluster lid C. Refer to [IP-12. "Exploded View"](#).
2. Remove center ventilator grilles (1).
 - Using flat screwdriver to push the pawls.
 - Pull to remove center ventilator grilles from cluster lid C.



INSTALLATION

Installation is basically the reverse order of removal.

CENTER VENTILATOR DUCT

A
B
C
D
E
F
G
H
VTL
J
K
L
M
N
O
P

DUCT AND GRILLE

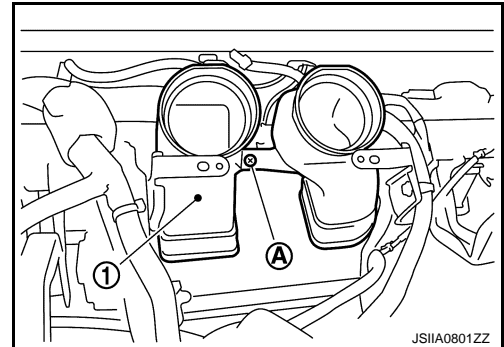
< REMOVAL AND INSTALLATION >

CENTER VENTILATOR DUCT : Removal and Installation

INFOID:000000005254148

REMOVAL

1. Remove instrument panel. Refer to [IP-12. "Exploded View"](#).
2. Remove screw (A), and then remove center ventilator duct (1).



INSTALLATION

Installation is basically the reverse order of removal.

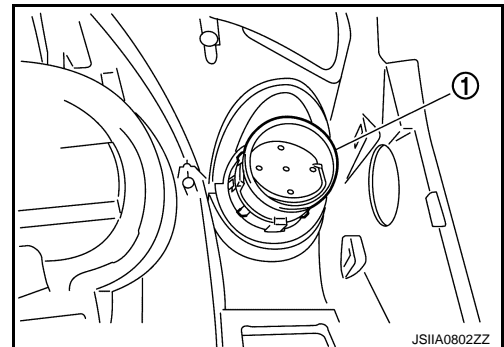
SIDE VENTILATOR GRILLE

SIDE VENTILATOR GRILLE : Removal and Installation

INFOID:000000005254149

REMOVAL

1. Remove side ventilator duct. Refer to [VTL-10. "Exploded View"](#).
2. Remove side ventilator grilles (1).
 - Using flat screwdriver to push the pawls.
 - Pull to remove center ventilator grilles from instrument panel.



INSTALLATION

Installation is basically the reverse order of removal.

SIDE VENTILATOR DUCT

SIDE VENTILATOR DUCT : Removal and Installation

INFOID:000000005254150

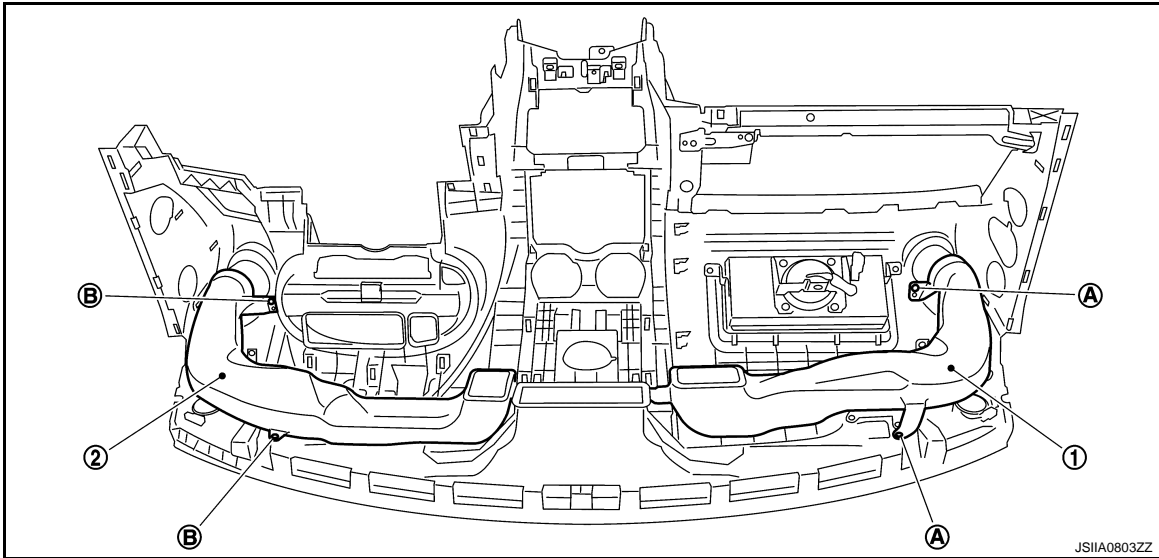
REMOVAL

1. Remove instrument panel. Refer to [IP-12. "Exploded View"](#).

DUCT AND GRILLE

< REMOVAL AND INSTALLATION >

2. Remove screws (A), and then remove side ventilator duct RH (1).



3. Remove screws (B), and then remove side ventilator duct LH (2).

INSTALLATION

Installation is basically the reverse order of removal.

SIDE DEFROSTER GRILLE

SIDE DEFROSTER GRILLE : Removal and Installation

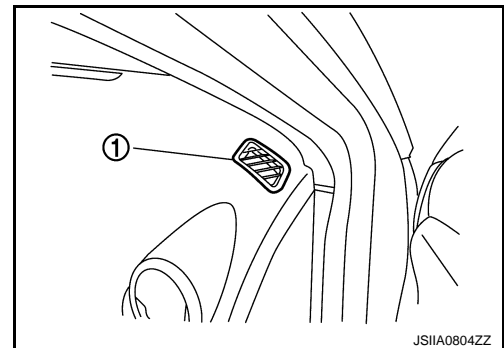
INFOID:000000005254151

REMOVAL

Using remover tool, remove side defroster grilles (1).

CAUTION:

Use shop cloth and all other protection necessities to avoid damage.



INSTALLATION

Installation is basically the reverse order of removal.

SIDE DEFROSTER DUCT

SIDE DEFROSTER DUCT : Removal and Installation

INFOID:000000005254152

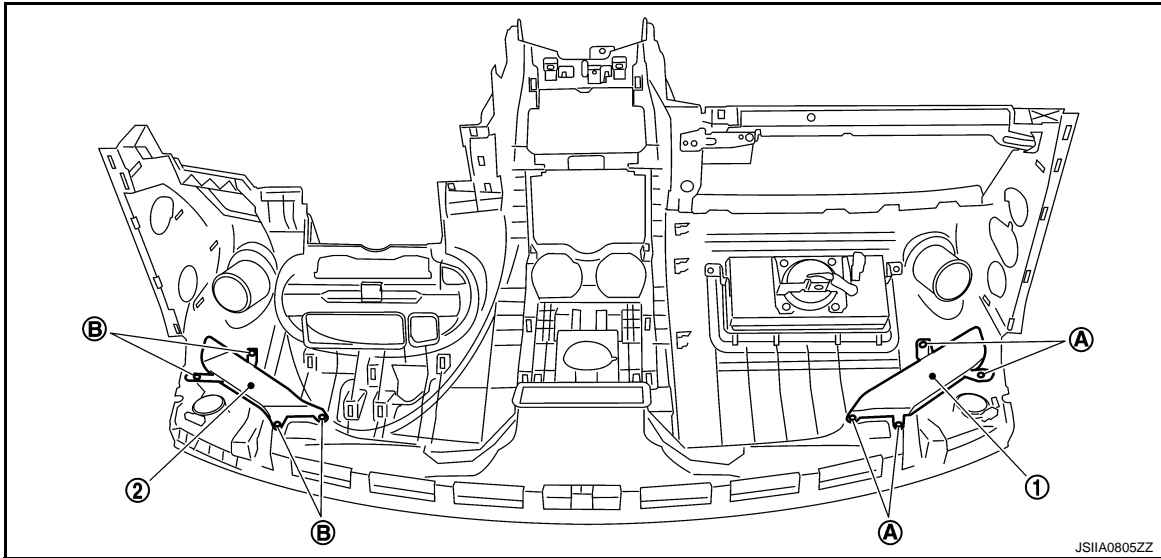
REMOVAL

1. Remove side ventilator duct. Refer to [VTL-10, "Exploded View"](#).

DUCT AND GRILLE

< REMOVAL AND INSTALLATION >

2. Remove screws (A), and then remove side defroster duct RH (1).



3. Remove screws (B), and then remove side defroster duct LH (2).

INSTALLATION

Installation is basically the reverse order of removal.

FRONT DEFROSTER GRILLE

FRONT DEFROSTER GRILLE : Removal and Installation

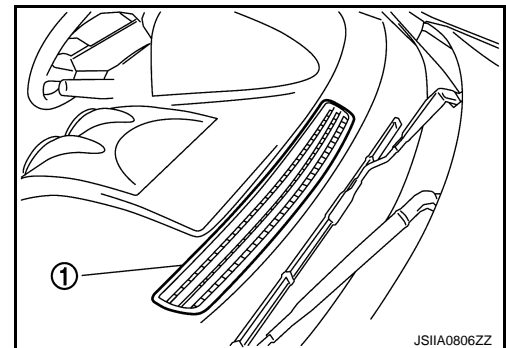
INFOID:000000005254153

REMOVAL

Using remover tool, remove front defroster grille (1).

CAUTION:

Use shop cloth and all other protection necessities to avoid damage.



INSTALLATION

Installation is basically the reverse order of removal.

FRONT FOOT DUCT

FRONT FOOT DUCT : Removal and Installation

INFOID:000000005254154

REMOVAL

Driver side

1. Remove instrument driver lower cover. Refer to [IP-12, "Exploded View"](#).
2. Remove knee protector. Refer to [IP-12, "Exploded View"](#).
3. Remove rear foot duct 1 (with rear foot duct). Refer to [VTL-10, "Exploded View"](#).
4. Remove front foot duct LH.

Passenger side

1. Remove glove box assembly. Refer to [IP-12, "Exploded View"](#).
2. Remove mounting screws, and then remove front foot duct RH.

INSTALLATION

DUCT AND GRILLE

< REMOVAL AND INSTALLATION >

Installation is basically the reverse order of removal.

REAR FOOT DUCT 1

A

REAR FOOT DUCT 1 : Removal and Installation

INFOID:000000005254155

REMOVAL

B

1. Remove cluster lid C. Refer to [IP-12, "Exploded View"](#).
2. Remove screw, and then remove rear foot duct 1.

C

INSTALLATION

Installation is basically the reverse order of removal.

REAR FOOT DUCT 2

D

REAR FOOT DUCT 2 : Removal and Installation

INFOID:000000005254156

REMOVAL

E

1. Remove instrument lower cover LH. Refer to [IP-12, "Exploded View"](#).
2. Remove rear foot duct 2. Refer to [VTL-10, "Exploded View"](#).

F

INSTALLATION

Installation is basically the reverse of removal.

REAR FOOT DUCT 3

G

REAR FOOT DUCT 3 : Removal and Installation

INFOID:000000005254157

REMOVAL

Driver side

1. Peel back floor carpet to a point where rear foot duct 3 LH is visible. Refer to [INT-22, "Exploded View"](#).
2. Remove clips, and then remove rear foot duct 3 LH.

VTL

Passenger side

1. Peel back floor carpet to a point where rear foot duct 3 RH is visible. Refer to [INT-22, "Exploded View"](#).
2. Remove clip, and then remove rear foot duct 3 RH.

J

K

INSTALLATION

Installation is basically the reverse of removal.

L

M

N

O

P

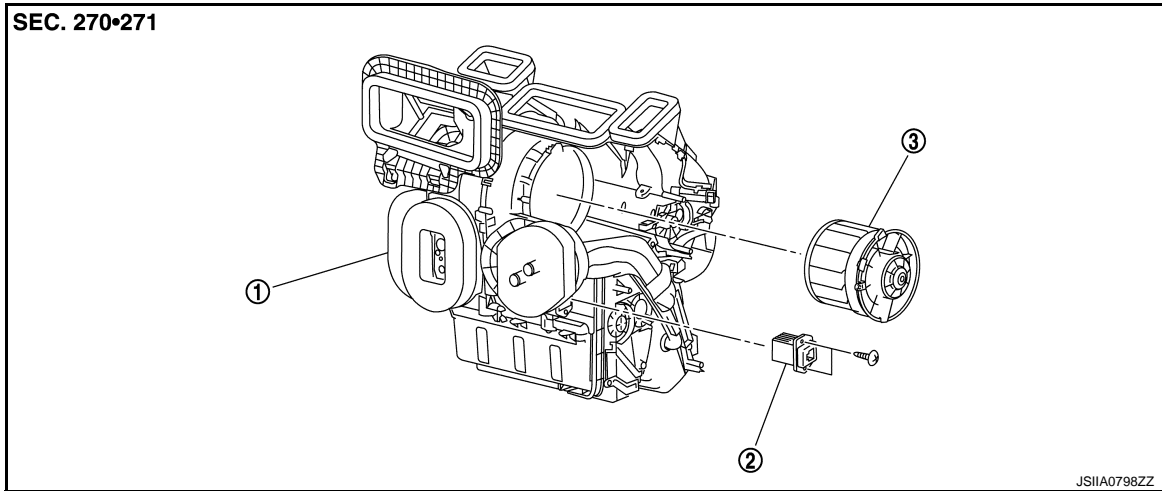
BLOWER MOTOR

< REMOVAL AND INSTALLATION >

BLOWER MOTOR

Exploded View

INFOID:000000005254158



1. A/C unit assembly

2. Fan control amp.

3. Blower motor

Removal and Installation

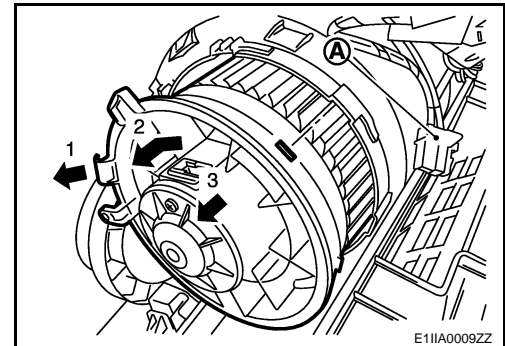
INFOID:000000005254159

REMOVAL

1. Remove instrument driver lower cover. Refer to [IP-12, "Exploded View"](#).
2. Remove combination meter. Refer to [MWI-87, "Exploded View"](#).
3. Remove knee protector. Refer to [IP-12, "Exploded View"](#).
4. Remove foot duct LH. Refer to [VTL-10, "Exploded View"](#).
5. Remove mode door motor. Refer to [HAC-91, "Exploded View"](#).
6. Remove brake pedal assembly and accelerator pedal. Refer to [BR-20, "Exploded View"](#).
7. Disconnect blower motor connector (A).
8. Press flange holding hook (1). Then turn blower motor counter-clockwise (2).
9. Pull outside (3) and remove blower motor.

CAUTION:

The balance is adjusted when blower fan and blower motor are assembled, so do not replace the individual parts.



INSTALLATION

Installation is basically the reverse order of removal.

CAUTION:

Install correctly blower motor flange holding hook in A/C unit assembly.

FAN CONTROL AMPLIFIER

< REMOVAL AND INSTALLATION >

FAN CONTROL AMPLIFIER

Exploded View

INFOID:000000005254160

Refer to [VTL-16, "Exploded View"](#).

Removal and Installation

INFOID:000000005254161

REMOVAL

1. Remove instrument driver lower cover. Refer to [IP-12, "Exploded View"](#).
2. Remove accelerator pedal assembly. Refer to [ACC-4, "Exploded View"](#).
3. Disconnect fan control amp. connector.
4. Remove mounting screws, and then remove fan control amp.

INSTALLATION

Installation is basically the reverse order of removal.

A

B

C

D

E

F

G

H

VTL

J

K

L

M

N

O

P