

SECTION **EX**
EXHAUST SYSTEM



CONTENTS

PRECAUTION	2	Inspection	3	F
PRECAUTIONS	2	REMOVAL AND INSTALLATION	4	
Removal and Installation	2	EXHAUST SYSTEM	4	G
PERIODIC MAINTENANCE	3	Exploded View	4	
EXHAUST SYSTEM	3	Removal and Installation	4	H
		Inspection	5	

A
C
D
E
F
G
H
I
J
K
L
M
N
O
P

PRECAUTIONS

< PRECAUTION >

PRECAUTION

PRECAUTIONS

Removal and Installation

INFOID:000000007350272

CAUTION:

- Be sure to use genuine exhaust system parts or equivalents which are specially designed for heat resistance, corrosion resistance, and shape.
- Perform the operation with the exhaust system fully cooled down because the system will be hot just after engine stops.
- Be careful not to cut your hand on the heat insulator edge.

EXHAUST SYSTEM

< PERIODIC MAINTENANCE >

PERIODIC MAINTENANCE

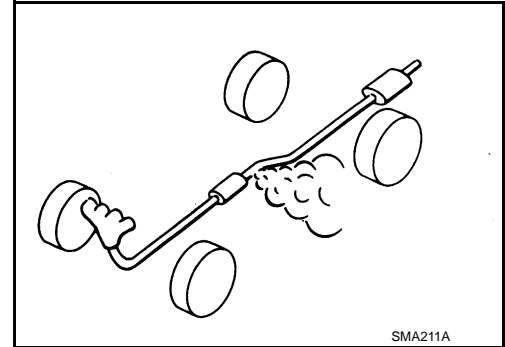
EXHAUST SYSTEM

Inspection

Check exhaust pipes, muffler, and mounting for improper attachment, leakage, cracks, damage or deterioration.

- If anything is found, repair or replace damaged parts.

INFOID:000000007350275



A

EX

C

D

E

F

G

H

I

J

K

L

M

N

O

P

EXHAUST SYSTEM

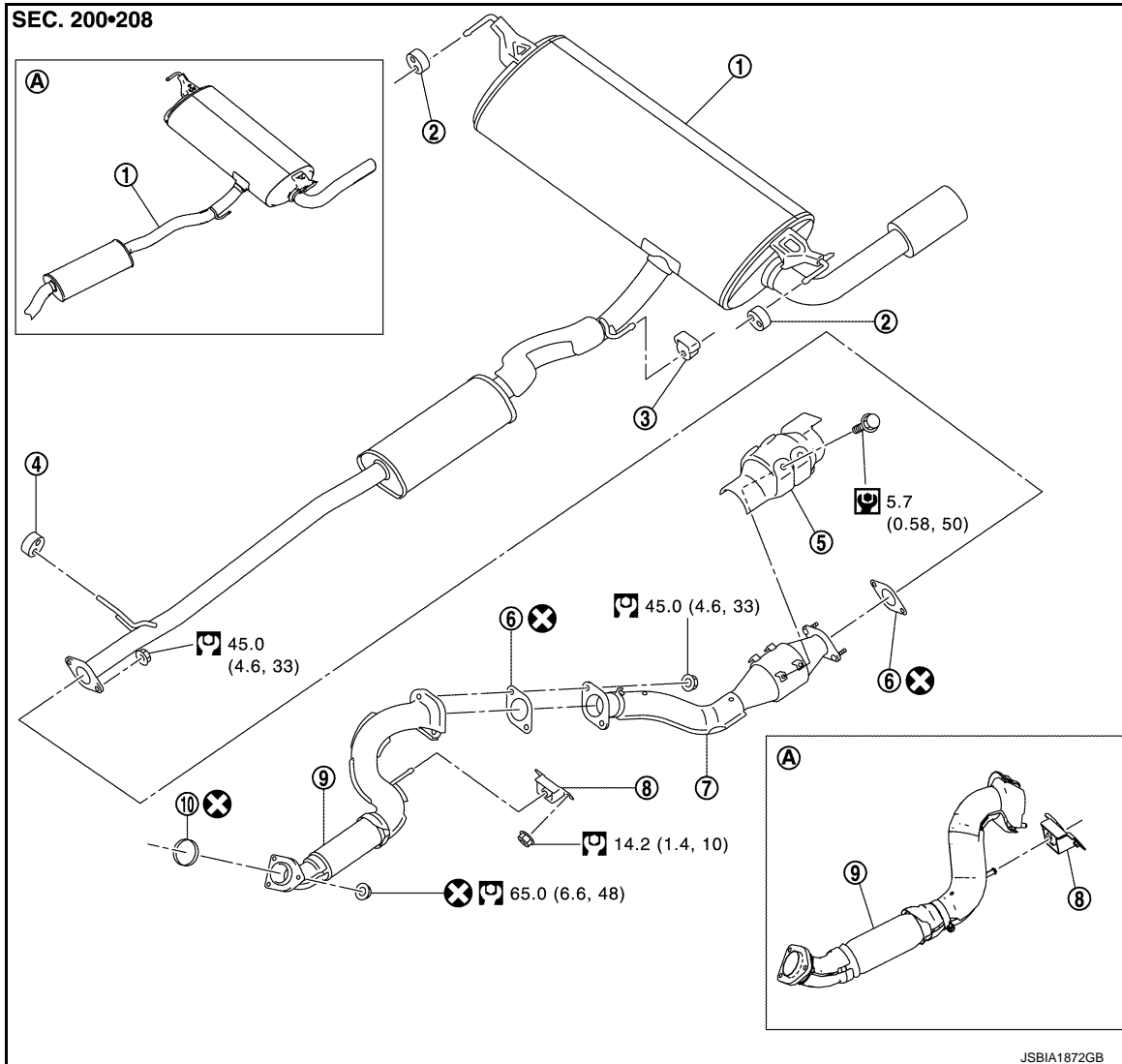
< REMOVAL AND INSTALLATION >

REMOVAL AND INSTALLATION

EXHAUST SYSTEM

Exploded View

INFOID:000000007350276



- | | | |
|------------------------|--------------------|-----------------------|
| 1. Muffer assembly | 2. Mounting rubber | 3. Mounting rubber |
| 4. Mounting rubber | 5. Insulator | 6. Gasket |
| 7. Exhaust center tube | 8. Mounting rubber | 9. Exhaust front tube |
| 10. Gasket | | |

A. 2WD

⊗ : Always replace after every disassembly.

☐ : N·m (kg·m, ft·lb)

☐ : N·m (kg·m, in·lb)

Removal and Installation

INFOID:000000007350277

REMOVAL

- Disconnect each joint and mounting.

INSTALLATION

EXHAUST SYSTEM

< REMOVAL AND INSTALLATION >

Note the following, and install in the reverse order of removal.

CAUTION:

- Always replace exhaust gasket with new ones when reassembling.
- If heat insulator is badly deformed, repair or replace it. If deposits such as mud pile up on the heat insulator, remove them.
- When installing heat insulator avoid large gaps or interference between heat insulator and each exhaust pipe.
- Remove deposits from the sealing surface of each connection. Connect them securely to avoid gas leakage.
- If it is difficult to install mounting rubber, use mild detergent for smooth installation.
- When installing each mounting rubber, avoid twisting or unusual extension in up/down and right/left directions.
- Temporarily tighten mounting nuts and bolts. Check each part for unusual interference, and then tighten them to the specified torque.

Inspection

INFOID:000000007350278

INSPECTION AFTER INSTALLATION

- Check clearance between tail tube and rear bumper is even.
- With engine running, check exhaust tube joints for gas leakage and unusual noises.
- Check to ensure that mounting brackets and mounting rubbers are installed properly and free from undue stress. Improper installation could result in excessive noise and vibration.

A

EX

C

D

E

F

G

H

I

J

K

L

M

N

O

P