

SECTION **SE**
SEAT

A
B
C
D
E
F
G
H
SE
J
K
L
M
N
O
P

CONTENTS

SERVICE INFORMATION	2	Diagnostic Worksheet	9
PRECAUTIONS	2	HEATED SEAT	11
Precaution for Supplemental Restraint System (SRS) "AIR BAG" and "SEAT BELT PRE-TENSIONER"	2	Description	11
Precaution Necessary for Steering Wheel Rotation After Battery Disconnect	2	Wiring Diagram - HSEAT -	12
Precaution for Work	3	FRONT SEAT	14
Service Notice	3	Exploded View	14
PREPARATION	4	Removal and Installation	16
Special Service Tool	4	Disassembly and Assembly	17
Commercial Service Tool	4	REAR SEAT	25
SQUEAK AND RATTLE TROUBLE DIAGNOSIS	5	Exploded View - 60:40 Split Fold Down	25
Work Flow	5	Removal and Installation - 60:40 Split Fold Down...26	
Generic Squeak and Rattle Troubleshooting	7	Disassembly and Assembly - 60:40 Split Fold Down	28
		Exploded View - Fixed Back Seat	30
		Removal and Installation - Fixed Back Seat	30

PRECAUTIONS

< SERVICE INFORMATION >

SERVICE INFORMATION

PRECAUTIONS

Precaution for Supplemental Restraint System (SRS) "AIR BAG" and "SEAT BELT PRE-TENSIONER"

INFOID:000000007402295

The Supplemental Restraint System such as "AIR BAG" and "SEAT BELT PRE-TENSIONER", used along with a front seat belt, helps to reduce the risk or severity of injury to the driver and front passenger for certain types of collision. This system includes seat belt switch inputs and dual stage front air bag modules. The SRS system uses the seat belt switches to determine the front air bag deployment, and may only deploy one front air bag, depending on the severity of a collision and whether the front occupants are belted or unbelted. Information necessary to service the system safely is included in the SRS and SB section of this Service Manual.

WARNING:

- To avoid rendering the SRS inoperative, which could increase the risk of personal injury or death in the event of a collision which would result in air bag inflation, all maintenance must be performed by an authorized NISSAN/INFINITI dealer.
- Improper maintenance, including incorrect removal and installation of the SRS can lead to personal injury caused by unintentional activation of the system. For removal of Spiral Cable and Air Bag Module, see the SRS section.
- Do not use electrical test equipment on any circuit related to the SRS unless instructed to in this Service Manual. SRS wiring harnesses can be identified by yellow and/or orange harnesses or harness connectors.

PRECAUTIONS WHEN USING POWER TOOLS (AIR OR ELECTRIC) AND HAMMERS

WARNING:

- When working near the Airbag Diagnosis Sensor Unit or other Airbag System sensors with the Ignition ON or engine running, DO NOT use air or electric power tools or strike near the sensor(s) with a hammer. Heavy vibration could activate the sensor(s) and deploy the air bag(s), possibly causing serious injury.
- When using air or electric power tools or hammers, always switch the Ignition OFF, disconnect the battery, and wait at least 3 minutes before performing any service.

Precaution Necessary for Steering Wheel Rotation After Battery Disconnect

INFOID:000000007402296

NOTE:

- This Procedure is applied only to models with Intelligent Key system and NATS (NISSAN ANTI-THEFT SYSTEM).
- Remove and install all control units after disconnecting both battery cables with the ignition knob in the "LOCK" position.
- Always use CONSULT to perform self-diagnosis as a part of each function inspection after finishing work. If DTC is detected, perform trouble diagnosis according to self-diagnostic results.

For models equipped with the Intelligent Key system and NATS, an electrically controlled steering lock mechanism is adopted on the key cylinder.

For this reason, if the battery is disconnected or if the battery is discharged, the steering wheel will lock and steering wheel rotation will become impossible.

If steering wheel rotation is required when battery power is interrupted, follow the procedure below before starting the repair operation.

OPERATION PROCEDURE

1. Connect both battery cables.

NOTE:

Supply power using jumper cables if battery is discharged.

2. Use the Intelligent Key or mechanical key to turn the ignition switch to the "ACC" position. At this time, the steering lock will be released.
3. Disconnect both battery cables. The steering lock will remain released and the steering wheel can be rotated.
4. Perform the necessary repair operation.

PRECAUTIONS

< SERVICE INFORMATION >

5. When the repair work is completed, return the ignition switch to the "LOCK" position before connecting the battery cables. (At this time, the steering lock mechanism will engage.)
6. Perform a self-diagnosis check of all control units using CONSULT.

Precaution for Work

INFOID:000000009326550

- When removing or disassembling each component, be careful not to damage or deform it. If a component may be subject to interference, be sure to protect it with a shop cloth.
- When removing (disengaging) components with a screwdriver or similar tool, be sure to wrap the component with a shop cloth or vinyl tape to protect it.
- Protect the removed parts with a shop cloth and prevent them from being dropped.
- Replace a deformed or damaged clip.
- If a part is specified as a non-reusable part, always replace it with a new one.
- Be sure to tighten bolts and nuts securely to the specified torque.
- After installation is complete, be sure to check that each part works properly.
- Follow the steps below to clean components:
 - Water soluble dirt:
 - Dip a soft cloth into lukewarm water, wring the water out of the cloth and wipe the dirty area.
 - Then rub with a soft, dry cloth.
 - Oily dirt:
 - Dip a soft cloth into lukewarm water with mild detergent (concentration: within 2 to 3%) and wipe the dirty area.
 - Then dip a cloth into fresh water, wring the water out of the cloth and wipe the detergent off.
 - Then rub with a soft, dry cloth.
 - Do not use organic solvent such as thinner, benzene, alcohol or gasoline.
 - For genuine leather seats, use a genuine leather seat cleaner.

Service Notice

INFOID:000000007402298

- When removing or installing various parts, place a cloth or padding onto the vehicle body to prevent scratches.
- Handle trim, molding instruments, grille, etc. carefully during removing or installing. Be careful not to oil or damage them.
- Apply sealing compound where necessary when installing parts.
- When applying sealing compound, be careful that the sealing compound does not protrude from parts.
- When replacing any metal parts (for example body outer panel, member, etc.), be sure to take rust prevention measures.

PREPARATION

< SERVICE INFORMATION >

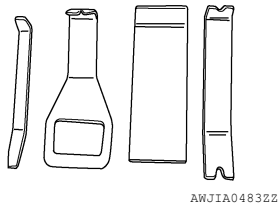
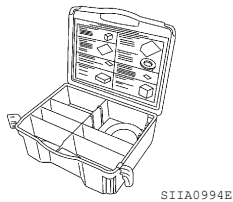
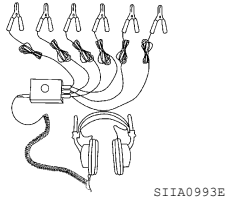
PREPARATION

Special Service Tool

INFOID:000000007402299

The actual shapes of Kent-Moore tools may differ from those of special service tools illustrated here.

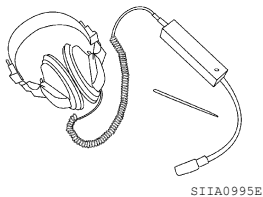
Tool number (Kent-Moore No.) Tool name	Description
— (J-39570) Chassis Ear	Locating the noise
— (J-43980) NISSAN Squeak and Rattle Kit	Repairing the cause of noise
— (J-46534) Trim Tool Set	Removing trim components



Commercial Service Tool

INFOID:000000007402300

(Kent-Moore No.) Tool name	Description
(J-39565) Engine Ear	Locating the noise



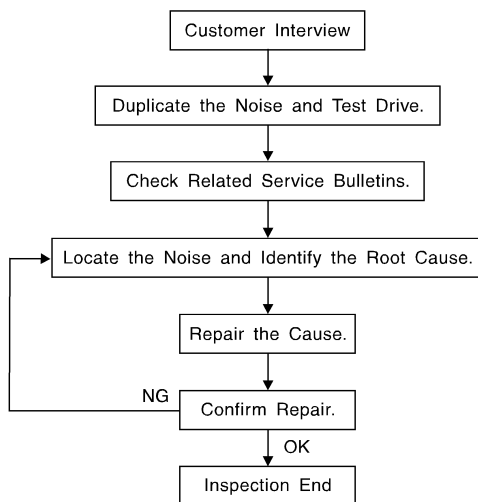
SQUEAK AND RATTLE TROUBLE DIAGNOSIS

< SERVICE INFORMATION >

SQUEAK AND RATTLE TROUBLE DIAGNOSIS

Work Flow

INFOID:000000007402301



SBT842

CUSTOMER INTERVIEW

Interview the customer if possible, to determine the conditions that exist when the noise occurs. Use the Diagnostic Worksheet during the interview to document the facts and conditions when the noise occurs and any customer's comments; refer to [SE-9, "Diagnostic Worksheet"](#). This information is necessary to duplicate the conditions that exist when the noise occurs.

- The customer may not be able to provide a detailed description or the location of the noise. Attempt to obtain all the facts and conditions that exist when the noise occurs (or does not occur).
- If there is more than one noise in the vehicle, be sure to diagnose and repair the noise that the customer is concerned about. This can be accomplished by test driving the vehicle with the customer.
- After identifying the type of noise, isolate the noise in terms of its characteristics. The noise characteristics are provided so the customer, service adviser and technician are all speaking the same language when defining the noise.
- Squeak —(Like tennis shoes on a clean floor)
Squeak characteristics include the light contact/fast movement/brought on by road conditions/hard surfaces = higher pitch noise/softer surfaces = lower pitch noises/edge to surface = chirping.
- Creak—(Like walking on an old wooden floor)
Creak characteristics include firm contact/slow movement/twisting with a rotational movement/pitch dependent on materials/often brought on by activity.
- Rattle—(Like shaking a baby rattle)
Rattle characteristics include the fast repeated contact/vibration or similar movement/loose parts/missing clip or fastener/incorrect clearance.
- Knock —(Like a knock on a door)
Knock characteristics include hollow sounding/sometimes repeating/often brought on by driver action.
- Tick—(Like a clock second hand)
Tick characteristics include gentle contacting of light materials/loose components/can be caused by driver action or road conditions.
- Thump—(Heavy, muffled knock noise)
Thump characteristics include softer knock/dead sound often brought on by activity.
- Buzz—(Like a bumble bee)
Buzz characteristics include high frequency rattle/firm contact.
- Often the degree of acceptable noise level will vary depending upon the person. A noise that you may judge as acceptable may be very irritating to the customer.
- Weather conditions, especially humidity and temperature, may have a great effect on noise level.

DUPLICATE THE NOISE AND TEST DRIVE

If possible, drive the vehicle with the customer until the noise is duplicated. Note any additional information on the Diagnostic Worksheet regarding the conditions or location of the noise. This information can be used to duplicate the same conditions when you confirm the repair.

SQUEAK AND RATTLE TROUBLE DIAGNOSIS

< SERVICE INFORMATION >

If the noise can be duplicated easily during the test drive, to help identify the source of the noise, try to duplicate the noise with the vehicle stopped by doing one or all of the following:

- 1) Close a door.
 - 2) Tap or push/pull around the area where the noise appears to be coming from.
 - 3) Rev the engine.
 - 4) Use a floor jack to recreate vehicle "twist".
 - 5) At idle, apply engine load (electrical load, half-clutch on M/T model, drive position on CVT and A/T models).
 - 6) Raise the vehicle on a hoist and hit a tire with a rubber hammer.
- Drive the vehicle and attempt to duplicate the conditions the customer states exist when the noise occurs.
 - If it is difficult to duplicate the noise, drive the vehicle slowly on an undulating or rough road to stress the vehicle body.

CHECK RELATED SERVICE BULLETINS

After verifying the customer concern or symptom, check ASIST for Technical Service Bulletins (TSBs) related to that concern or symptom.

If a TSB relates to the symptom, follow the procedure to repair the noise.

LOCATE THE NOISE AND IDENTIFY THE ROOT CAUSE

1. Narrow down the noise to a general area. To help pinpoint the source of the noise, use a listening tool (Chassis Ear: J-39570, Engine Ear: J-39565 and mechanic's stethoscope).
2. Narrow down the noise to a more specific area and identify the cause of the noise by:
 - removing the components in the area that you suspect the noise is coming from.
Do not use too much force when removing clips and fasteners, otherwise clips and fasteners can be broken or lost during the repair, resulting in the creation of new noise.
 - tapping or pushing/pulling the component that you suspect is causing the noise.
Do not tap or push/pull the component with excessive force, otherwise the noise will be eliminated only temporarily.
 - feeling for a vibration with your hand by touching the component(s) that you suspect is (are) causing the noise.
 - placing a piece of paper between components that you suspect are causing the noise.
 - looking for loose components and contact marks.
Refer to [SE-9, "Diagnostic Worksheet"](#).

REPAIR THE CAUSE

- If the cause is a loose component, tighten the component securely.
- If the cause is insufficient clearance between components:
 - separate components by repositioning or loosening and retightening the component, if possible.
 - insulate components with a suitable insulator such as urethane pads, foam blocks, felt cloth tape or urethane tape. A NISSAN Squeak and Rattle Kit (J-43980) is available through your authorized NISSAN Parts Department.

CAUTION:

Do not use excessive force as many components are constructed of plastic and may be damaged.

Always check with the Parts Department for the latest parts information.

The following materials are contained in the NISSAN Squeak and Rattle Kit (J-43980). Each item can be ordered separately as needed.

URETHANE PADS [1.5 mm (0.059 in) thick]

Insulates connectors, harness, etc.

76268-9E005: 100×135 mm (3.94×5.31 in)/76884-71L01: 60×85 mm (2.36×3.35 in)/76884-71L02: 15×25 mm (0.59×0.98 in)

INSULATOR (Foam blocks)

Insulates components from contact. Can be used to fill space behind a panel.

73982-9E000: 45 mm (1.77 in) thick, 50×50 mm (1.97×1.97 in)/73982-50Y00: 10 mm (0.39 in) thick, 50×50 mm (1.97×1.97 in)

INSULATOR (Light foam block)

80845-71L00: 30 mm (1.18 in) thick, 30×50 mm (1.18×1.97 in)

FELT CLOTH TAPE

Used to insulate where movement does not occur. Ideal for instrument panel applications.

68370-4B000: 15×25 mm (0.59×0.98 in) pad/68239-13E00: 5 mm (0.20 in) wide tape roll. The following materials not found in the kit can also be used to repair squeaks and rattles.

UHMW (TEFLON) TAPE

Insulates where slight movement is present. Ideal for instrument panel applications.

SQUEAK AND RATTLE TROUBLE DIAGNOSIS

< SERVICE INFORMATION >

SILICONE GREASE

Used instead of UHMW tape that will be visible or not fit.

Note: Will only last a few months.

SILICONE SPRAY

Use when grease cannot be applied.

DUCT TAPE

Use to eliminate movement.

CONFIRM THE REPAIR

Confirm that the cause of a noise is repaired by test driving the vehicle. Operate the vehicle under the same conditions as when the noise originally occurred. Refer to the notes on the Diagnostic Worksheet.

Generic Squeak and Rattle Troubleshooting

INFOID:000000009326551

Refer to Table of Contents for specific component removal and installation information.

INSTRUMENT PANEL

Most incidents are caused by contact and movement between:

1. Cluster lid A and the instrument panel
2. Acrylic lens and combination meter housing
3. Instrument panel to front pillar finisher
4. Instrument panel to windshield
5. Instrument panel pins
6. Wiring harnesses behind the combination meter
7. A/C defroster duct and duct joint

These incidents can usually be located by tapping or moving the components to duplicate the noise or by pressing on the components while driving to stop the noise. Most of these incidents can be repaired by applying felt cloth tape or silicone spray (in hard to reach areas). Urethane pads can be used to insulate wiring harness.

CAUTION:

Do not use silicone spray to isolate a squeak or rattle. If you saturate the area with silicone, you will not be able to recheck the repair.

CENTER CONSOLE

Components to pay attention to include:

1. Shift selector assembly cover to finisher
2. A/C control unit and cluster lid C
3. Wiring harnesses behind audio and A/C control unit

The instrument panel repair and isolation procedures also apply to the center console.

DOORS

Pay attention to the:

1. Finisher and inner panel making a slapping noise
2. Inside handle escutcheon to door finisher
3. Wiring harnesses tapping
4. Door striker out of alignment causing a popping noise on starts and stops

Tapping or moving the components or pressing on them while driving to duplicate the conditions can isolate many of these incidents. You can usually insulate the areas with felt cloth tape or insulator foam blocks from the NISSAN Squeak and Rattle Kit (J-43980) to repair the noise.

TRUNK

Trunk noises are often caused by a loose jack or loose items put into the trunk by the owner.

In addition look for:

1. Trunk lid bumpers out of adjustment
2. Trunk lid striker out of adjustment
3. The trunk lid torsion bars knocking together
4. A loose license plate or bracket

A
B
C
D
E
F
G
H
SE
J
K
L
M
N
O
P

SQUEAK AND RATTLE TROUBLE DIAGNOSIS

< SERVICE INFORMATION >

Most of these incidents can be repaired by adjusting, securing or insulating the item(s) or component(s) causing the noise.

SUNROOF/HEADLINING

Noises in the sunroof/headlining area can often be traced to one of the following:

1. Sunroof lid, rail, linkage or seals making a rattle or light knocking noise
2. Sun visor shaft shaking in the holder
3. Front or rear windshield touching headlining and squeaking

Again, pressing on the components to stop the noise while duplicating the conditions can isolate most of these incidents. Repairs usually consist of insulating with felt cloth tape.

OVERHEAD CONSOLE (FRONT AND REAR)

Overhead console noises are often caused by the console panel clips not being engaged correctly. Most of these incidents are repaired by pushing up on the console at the clip locations until the clips engage.

In addition look for:

1. Loose harness or harness connectors.
2. Front console map/reading lamp lens loose.
3. Loose screws at console attachment points.

SEATS

When isolating seat noise it's important to note the position the seat is in and the load placed on the seat when the noise is present. These conditions should be duplicated when verifying and isolating the cause of the noise.

Cause of seat noise include:

1. Headrest rods and holder
2. A squeak between the seat pad cushion and frame
3. The rear seatback lock and bracket

These noises can be isolated by moving or pressing on the suspected components while duplicating the conditions under which the noise occurs. Most of these incidents can be repaired by repositioning the component or applying urethane tape to the contact area.

UNDERHOOD

Some interior noise may be caused by components under the hood or on the engine wall. The noise is then transmitted into the passenger compartment.

Causes of transmitted underhood noise include:

1. Any component installed to the engine wall
2. Components that pass through the engine wall
3. Engine wall mounts and connectors
4. Loose radiator installation pins
5. Hood bumpers out of adjustment
6. Hood striker out of adjustment

These noises can be difficult to isolate since they cannot be reached from the interior of the vehicle. The best method is to secure, move or insulate one component at a time and test drive the vehicle. Also, engine rpm or load can be changed to isolate the noise. Repairs can usually be made by moving, adjusting, securing, or insulating the component causing the noise.

SQUEAK AND RATTLE TROUBLE DIAGNOSIS

< SERVICE INFORMATION >

Diagnostic Worksheet

INFOID:000000007402303

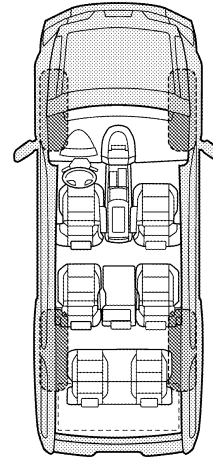
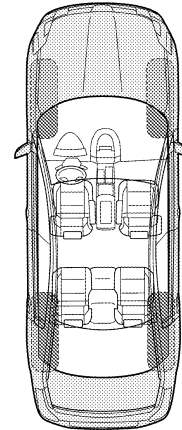
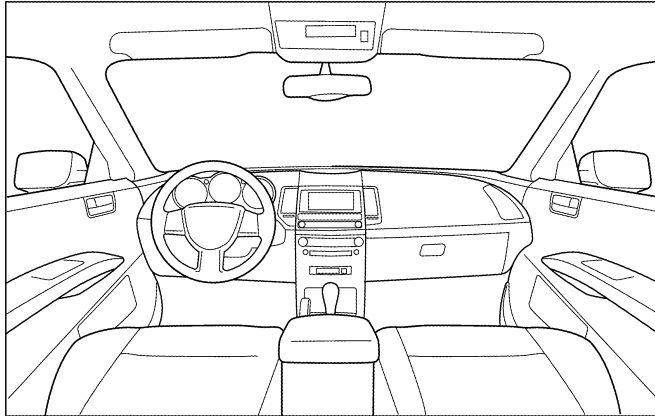
Dear Customer:

We are concerned about your satisfaction with your vehicle. Repairing a squeak or rattle sometimes can be very difficult. To help us fix your vehicle right the first time, please take a moment to note the area of the vehicle where the squeak or rattle occurs and under what conditions. You may be asked to take a test drive with a service advisor or technician to ensure we confirm the noise you are hearing.

SQUEAK & RATTLE DIAGNOSTIC WORKSHEET

I. WHERE DOES THE NOISE COME FROM? (circle the area of the vehicle)

The illustrations are for reference only, and may not reflect the actual configuration of your vehicle.



Continue to page 2 of the worksheet and briefly describe the location of the noise or rattle. In addition, please indicate the conditions which are present when the noise occurs.

A
B
C
D
E
F
G
H
SE
J
K
L
M
N
O
P

SQUEAK AND RATTLE TROUBLE DIAGNOSIS

< SERVICE INFORMATION >

SQUEAK & RATTLE DIAGNOSTIC WORKSHEET - page 2

Briefly describe the location where the noise occurs:

II. WHEN DOES IT OCCUR? (please check the boxes that apply)

- | | |
|---|--|
| <input type="checkbox"/> Anytime | <input type="checkbox"/> After sitting out in the rain |
| <input type="checkbox"/> 1st time in the morning | <input type="checkbox"/> When it is raining or wet |
| <input type="checkbox"/> Only when it is cold outside | <input type="checkbox"/> Dry or dusty conditions |
| <input type="checkbox"/> Only when it is hot outside | <input type="checkbox"/> Other: |

III. WHEN DRIVING:

- Through driveways
- Over rough roads
- Over speed bumps
- Only about ____ mph
- On acceleration
- Coming to a stop
- On turns: left, right or either (circle)
- With passengers or cargo
- Other: _____
- After driving ____ miles or ____ minutes

IV. WHAT TYPE OF NOISE

- Squeak (like tennis shoes on a clean floor)
- Creak (like walking on an old wooden floor)
- Rattle (like shaking a baby rattle)
- Knock (like a knock at the door)
- Tick (like a clock second hand)
- Thump (heavy muffled knock noise)
- Buzz (like a bumble bee)

TO BE COMPLETED BY DEALERSHIP PERSONNEL

Test Drive Notes:

	YES	NO	Initials of person performing
Vehicle test driven with customer	<input type="checkbox"/>	<input type="checkbox"/>	_____
- Noise verified on test drive	<input type="checkbox"/>	<input type="checkbox"/>	_____
- Noise source located and repaired	<input type="checkbox"/>	<input type="checkbox"/>	_____
- Follow up test drive performed to confirm repair	<input type="checkbox"/>	<input type="checkbox"/>	_____

VIN: _____ Customer Name _____

W.O.# _____ Date: _____

This form must be attached to Work Order

LATA0071E

HEATED SEAT

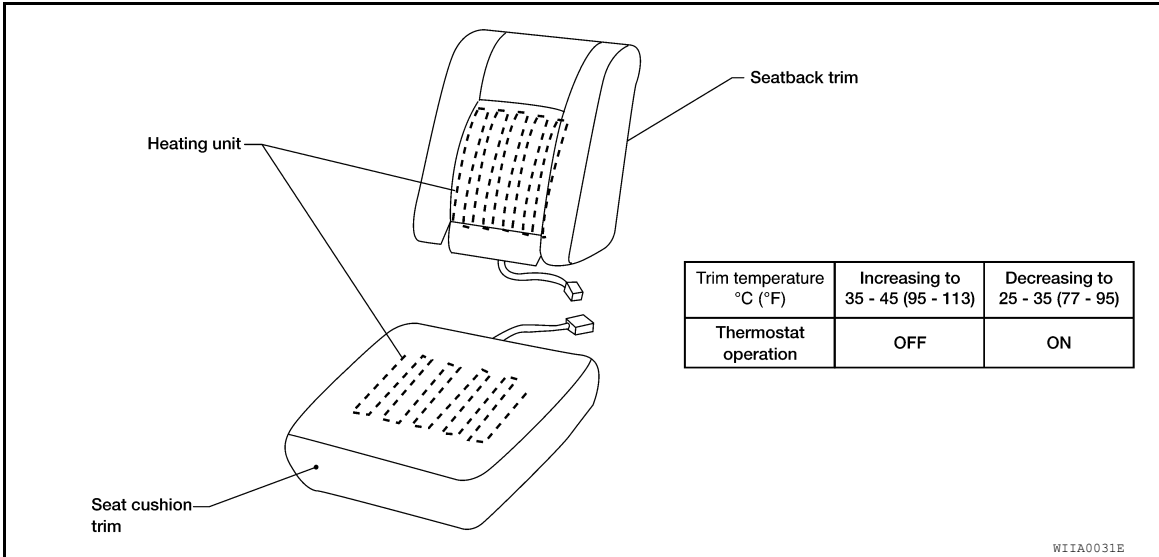
< SERVICE INFORMATION >

HEATED SEAT

Description

INFOID:000000007402304

- When handling seat, be extremely careful not to scratch heating unit.
- Do not use any organic solvent, such as thinner, benzene, alcohol, etc. to clean trim.



A

B

C

D

E

F

G

H

SE

J

K

L

M

N

O

P

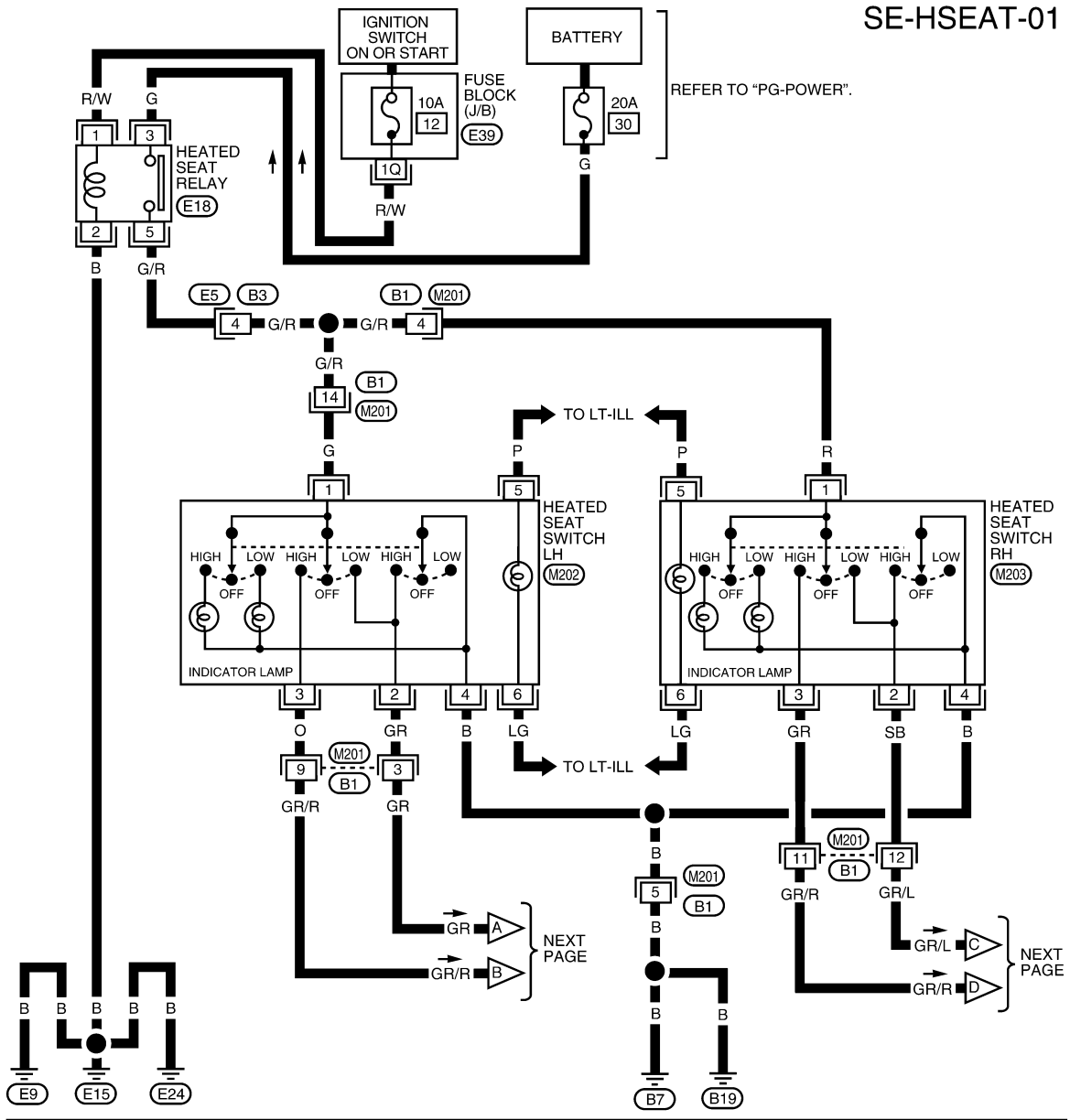
HEATED SEAT

< SERVICE INFORMATION >

Wiring Diagram - HSEAT -

INFOID:000000007402305

SE-HSEAT-01



1	2	3	4	5	6	7	(M201)		
8	9	10	11	12	13	14	15	16	W

6	5	(M202)	(M203)		
3	1	2	4	W	BR

1	2	3	(E5)
4	5	6	W

1	2	(E18)
5	7	BR
3	6	

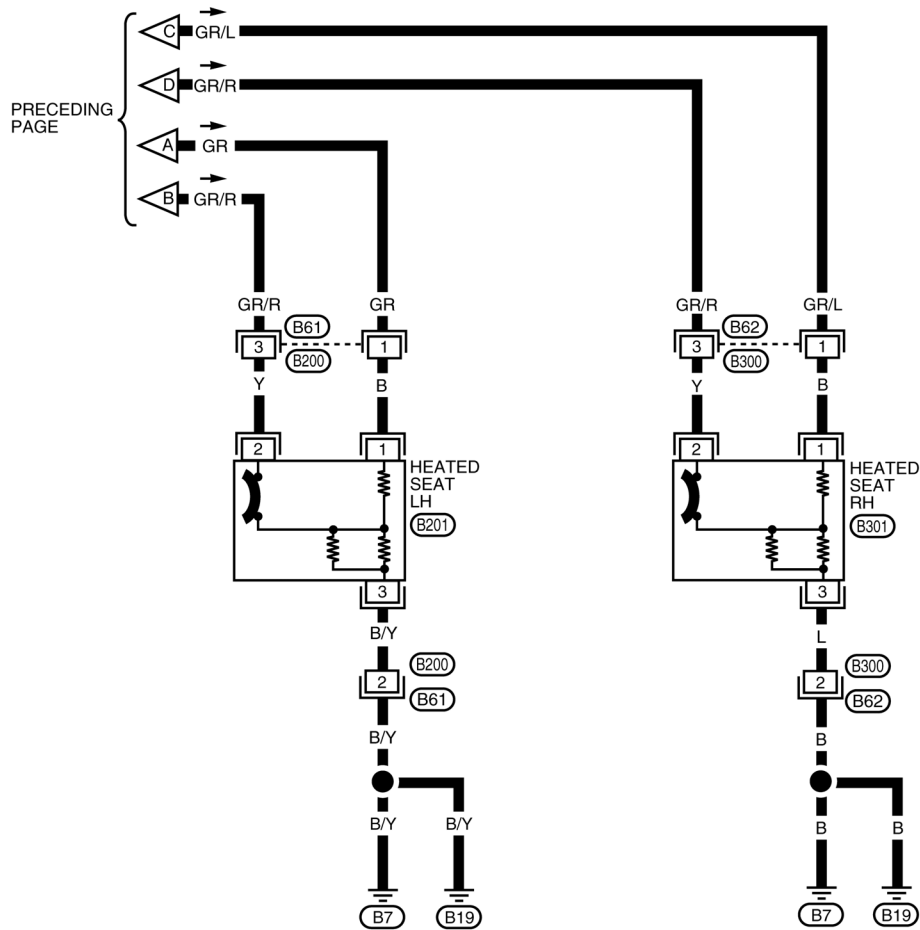
1Q	2Q	3Q	(E39)		
4Q	5Q	6Q	7Q	8Q	W

AAJWA0074GB

HEATED SEAT

< SERVICE INFORMATION >

SE-HSEAT-02



*: THIS CONNECTOR IS NOT SHOWN IN "HARNESS LAYOUT" OF PG SECTION.

ABJWA0203GB

FRONT SEAT

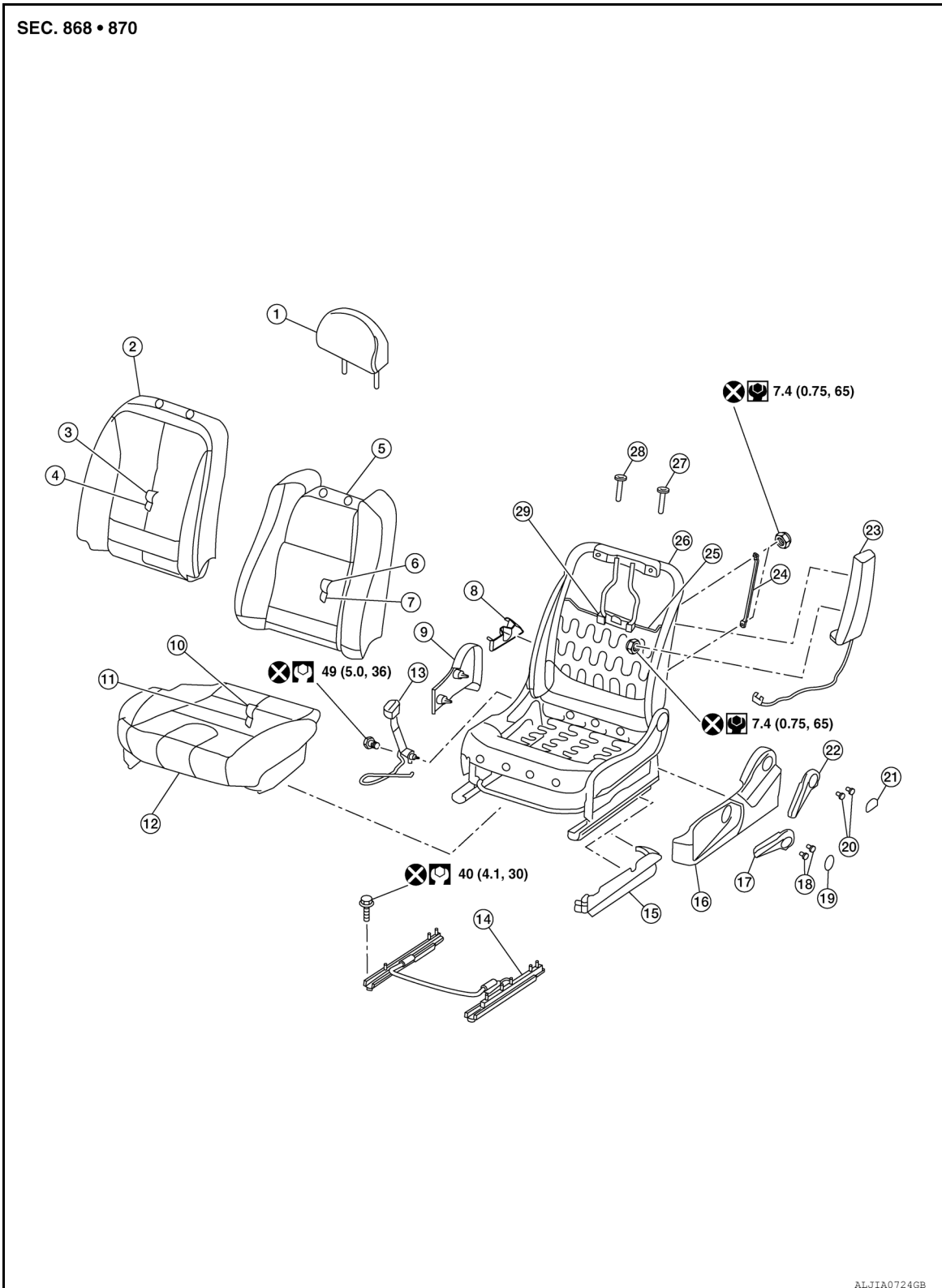
< SERVICE INFORMATION >

FRONT SEAT

Exploded View

INFOID:000000007402306

DRIVER SEAT



FRONT SEAT

< SERVICE INFORMATION >

1. Headrest	2. Seatback assembly (except SE-R)	3. Seatback trim (except SE-R)	A
4. Seatback pad (except SE-R)	5. Seatback assembly (SE-R)	6. Seatback trim (SE-R)	
7. Seatback pad (SE-R)	8. Seat cushion inner cover	9. Seat cushion inner finisher	
10. Seat cushion trim	11. Seat cushion pad	12. Seat cushion assembly	B
13. Seat belt buckle	14. Seat track assembly	15. Seat cushion outer finisher lower (if equipped)	
16. Seat cushion outer finisher upper	17. Lifter lever (if equipped)	18. Lifter lever screws (if equipped)	C
19. Lifter lever cover	20. Reclining lever screws	21. Reclining lever cover	
22. Reclining lever	23. Side air bag module	24. Chute rod	
25. Active headrest spring	26. Seat frame assembly	27. Headrest holder (locked)	D
28. Headrest holder (free)	29. Active headrest clip		

PASSENGER SEAT

E

F

G

H

SE

J

K

L

M

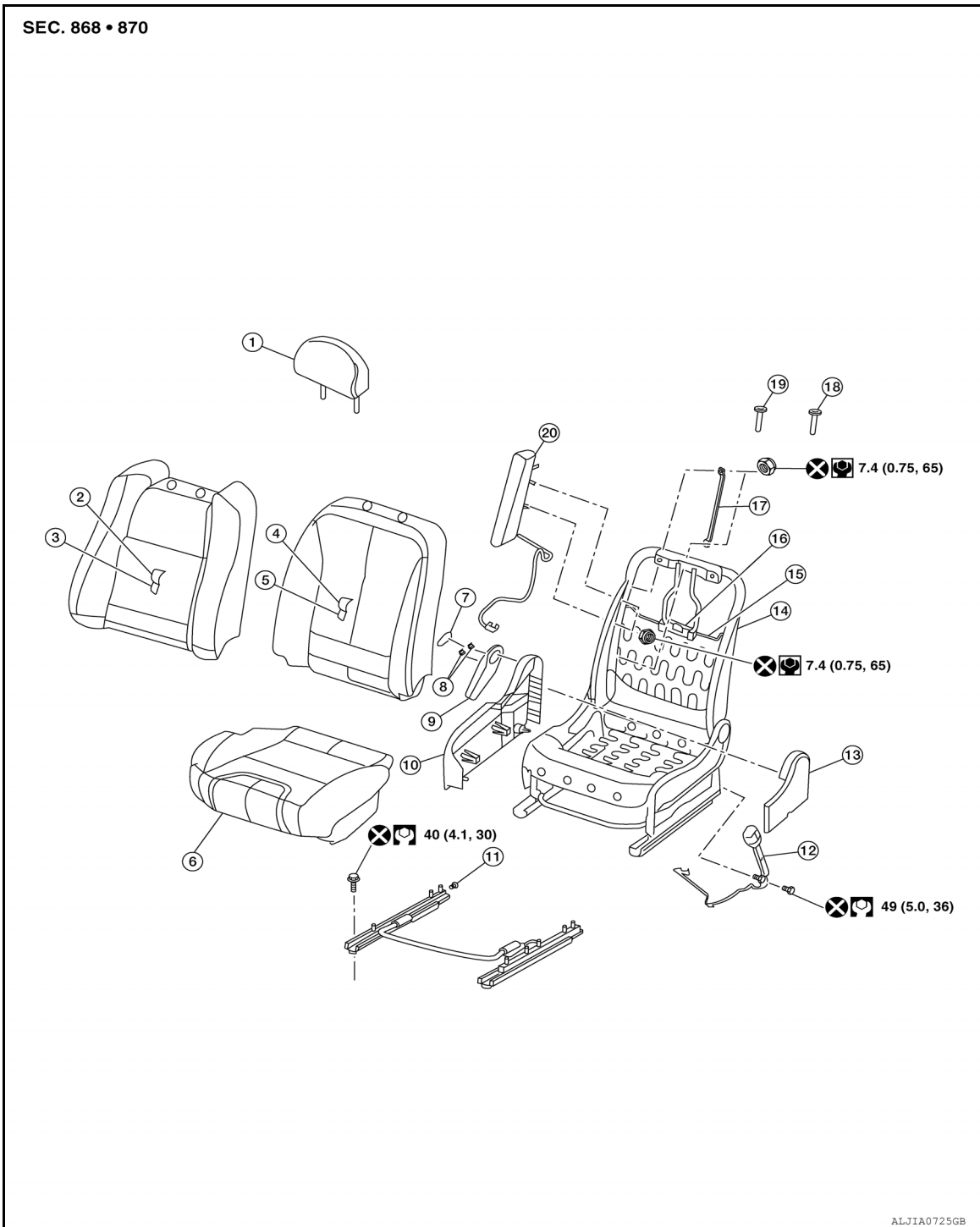
N

O

P

FRONT SEAT

< SERVICE INFORMATION >



- | | | |
|---------------------------------|-------------------------------|------------------------------|
| 1. Headrest | 2. Seatback trim (SE-R) | 3. Seatback pad (SE-R) |
| 4. Seatback trim (except SE-R) | 5. Seatback pad (except SE-R) | 6. Seat cushion assembly |
| 7. Reclining lever cover | 8. Reclining lever screws | 9. Reclining lever |
| 10. Seat cushion outer finisher | 11. Seat track assembly | 12. Seat belt buckle |
| 13. Seat cushion inner finisher | 14. Seat frame assembly | 15. Active headrest spring |
| 16. Active headrest clip | 17. Chute rod | 18. Headrest holder (locked) |
| 19. Headrest holder (free) | 20. Side air bag module | |

Removal and Installation

INFOID:000000007402308

CAUTION:

FRONT SEAT

< SERVICE INFORMATION >

- When removing and installing, use shop cloths to protect the vehicle from damage.
- Before removal, be sure to turn ignition switch off, disconnect both battery terminals, then wait at least three minutes.

REMOVAL

1. Disconnect the negative and the positive battery terminals and wait at least three minutes.
2. Remove the seat assembly bolts on the back side of the front seat.
3. Remove the seat assembly bolts on the front side of the front seat
4. Disconnect the body harness connector(s), then release the harness clips from the seat assembly.
5. Remove the front seat assembly from the vehicle.

NOTE:

Before removing the seat assembly from the vehicle, adjust the seatback to the upright position.

INSTALLATION

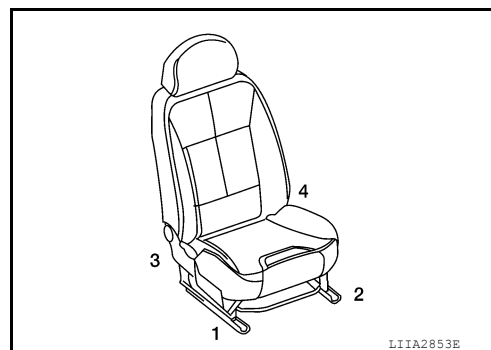
Installation in the reverse order of removal.

CAUTION:

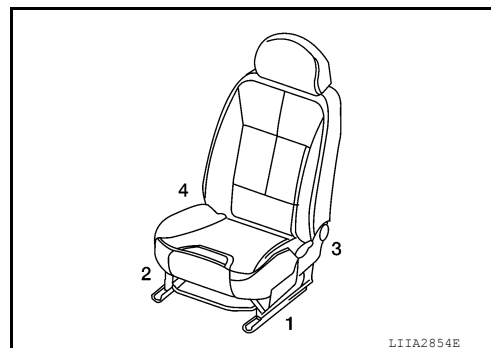
Always route the side air bag module harness in the original location. Replace any deformed or damaged clips with the same type and color. Always install clips in the original location on the harness.

NOTE:

- Before installation of the seat assembly, confirm that the inside and outside slide rails are locked at the same positions.
- Confirm that the slide rail location pin is set to the hole on the floor.
- When installing the LH front seat, tighten the bolts in the order shown.



- When installing the RH front seat, tighten the bolts in the order shown.



Disassembly and Assembly

INFOID:000000007402309

SEAT CUSHION FINISHER

CAUTION:

- Front passenger seat is equipped with an Occupant Classification System sensor and control module. Do not disassemble front passenger seat cushion assembly or remove the seat cushion trim as this will affect the Occupant Classification System calibration.
- During installation, the harness clips must be installed in the holes they were originally in. Do not add additional clips.

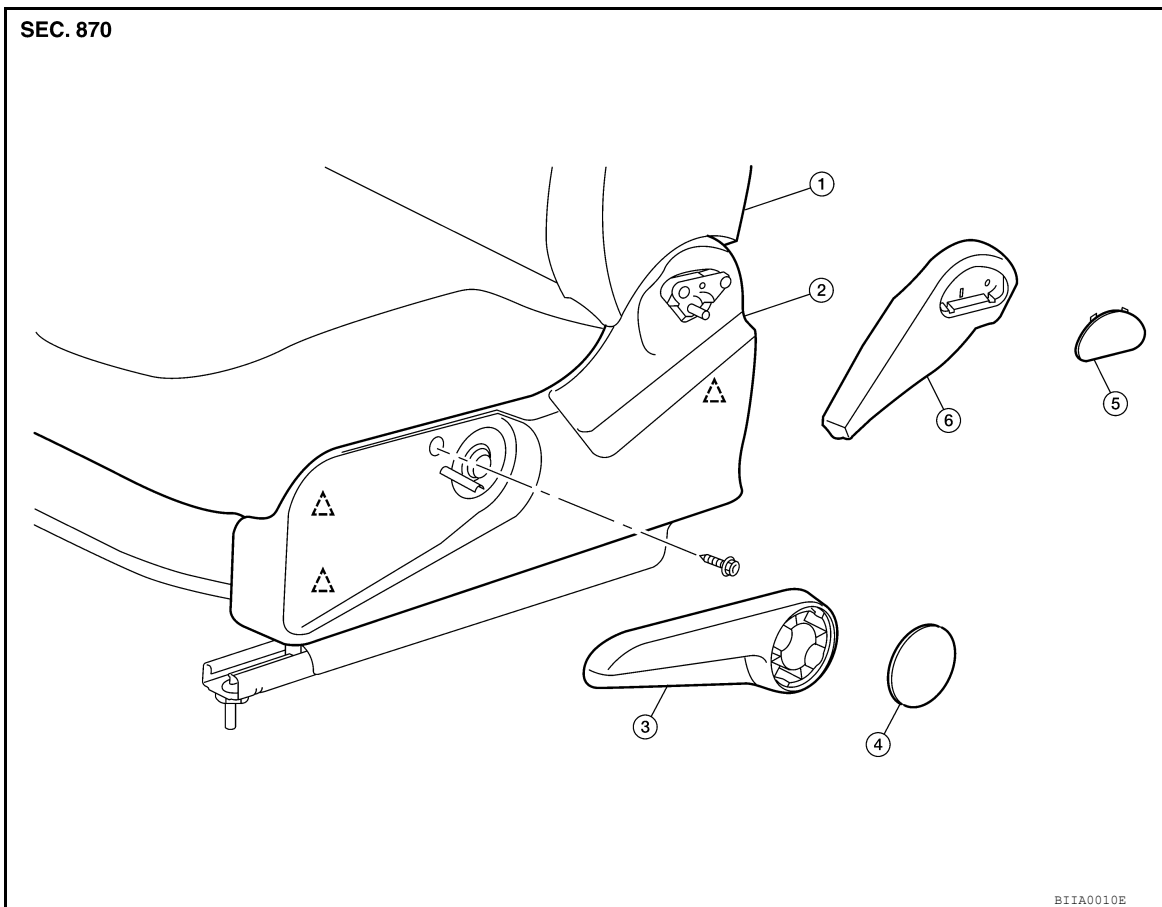
Disassembly

1. Remove the front seat assembly. Refer to [SE-16. "Removal and Installation"](#).

FRONT SEAT

< SERVICE INFORMATION >

2. Remove the reclining lever.
 - a. Remove the reclining lever cover.
 - b. Remove the reclining lever screws.
 - c. Remove the reclining lever.
3. Remove the lifter lever (if equipped).
 - a. Remove the lifter lever cover.
 - b. Remove the lifter lever screws.
 - c. Remove the lifter lever.
4. Remove the front seat belt buckle. Refer to [SB-4, "Removal and Installation of Front Seat Belt"](#).
5. Remove the seat cushion outer finisher upper.
 - a. Remove the screw from the seat cushion outer finisher upper.
 - b. Release the clips and remove the seat cushion outer finisher upper.

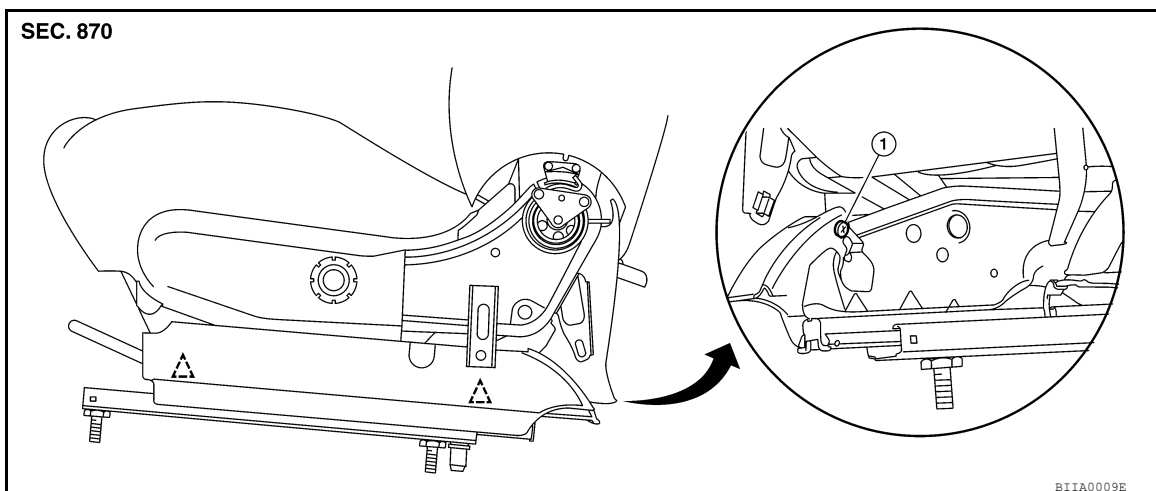


- | | | |
|-------------------------------------|--------------------------------------|-------------------------------|
| 1. Driver seat | 2. Seat cushion outer finisher upper | 3. Lifter lever (if equipped) |
| 4. Lifter lever cover (if equipped) | 5. Reclining lever cover | 6. Reclining lever |
- △ Clip

6. For driver seat, remove the seat cushion outer finisher lower (if equipped).
 - a. Remove the screw at the back inside edge of the seat cushion outer finisher lower.
 - b. Release the clips and remove the seat cushion outer finisher lower.

FRONT SEAT

< SERVICE INFORMATION >



1. Seat cushion outer finisher lower screw Clip

7. Release the clips, then remove the seat cushion inner finisher.

Assembly

Assembly is in the reverse order of disassembly.

SEAT CUSHION TRIM AND PAD

CAUTION:

- Front passenger seat is equipped with an Occupant Classification System sensor and control module. Do not disassemble front passenger seat cushion assembly or remove the seat cushion trim as this will affect the Occupant Classification System calibration.
- During installation, the harness clips must be installed in the holes they were originally in. Do not add additional clips.
- When removing or installing the seat trim, handle it carefully to keep dirt out and avoid damage.

NOTE:

For passenger side only, the occupant classification system control unit, occupant classification system sensor, and bladder are an integral part of the front passenger seat cushion trim and pad and are replaced together as an assembly.

Disassembly

1. Remove seat cushion finishers. Refer to "SEAT CUSHION FINISHER".
2. Release the J-retainers of seat cushion trim.
3. Route the side air bag module harness and harness clips through the opening in the seat cushion trim.
4. Remove the hog rings to separate the seat cushion pad and seat cushion trim.

NOTE:

Remove all pieces of hog rings and discard them.

5. Remove the seat cushion trim and seat cushion pad from the seat cushion frame.

Assembly

Assembly is in the reverse order of disassembly.

Install new hog rings on the seat cushion trim in their original positions.

NOTE:

Use NISSAN standard hog rings to assemble.

SEATBACK

WARNING:

Never leave any objects (screwdrivers, tools, etc.) on the seat during seatback repair. It can lead to personal injury if the side air bag module should accidentally deploy.

CAUTION:

- Before servicing, turn ignition switch OFF, disconnect both battery terminals and wait at least 3 minutes.
- Handle the side air bag module carefully. During disassembly, always hold the side air bag module, do not let it hang by the wire harness.

FRONT SEAT

< SERVICE INFORMATION >

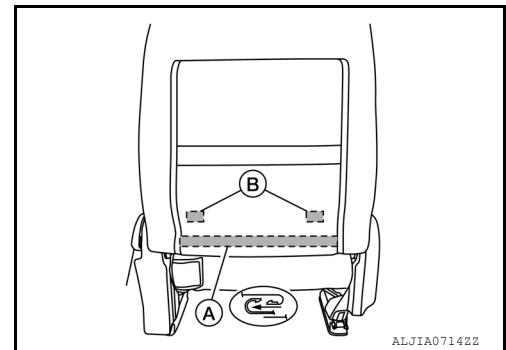
- Always place the side air bag module with the deployment side facing upward.
- Always work from the side or back of the seatback assembly, do not work in front of seat.
- Do not use air tools or electric tools for servicing the seat assembly.
- Replace the side air bag module if it has been dropped or sustained an impact.
- Do not insert any objects into the side air bag module.
- Do not attempt to disassemble the side air bag module.
- Do not expose the side air bag module to temperatures exceeding 90°C (194°F).
- Do not expose the side air bag module to any oil, grease, detergent or water.
- During disassembly, do not damage the seatback trim, chutes, harness connectors, retainers, clips, module harness or the side air bag module.

NOTE:

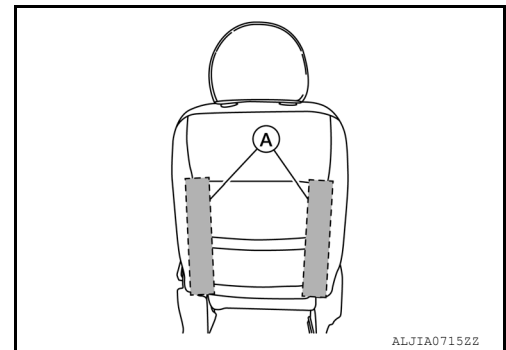
- If the vehicle has been involved in a collision and the side air bag has deployed, the front seatback assembly must be replaced.
- Driver side shown, passenger side similar.

Disassembly

1. Remove the front seat assembly. Refer to [SE-16, "Removal and Installation"](#).
2. Release the seatback lower center J-retainer (A).
3. Release the seatback lower left and right J-retainers (B).



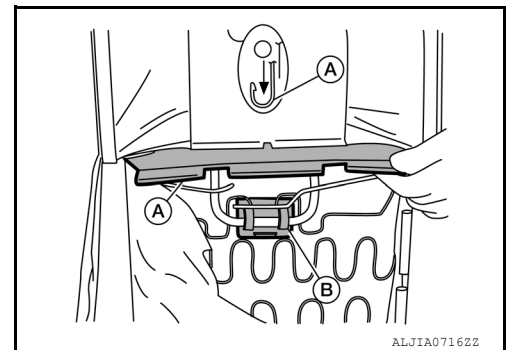
4. Unzip the sliders of the seatback side zippers (A).



5. Release the triple hooked upper J-retainer (A).

CAUTION:

Do not remove active headrest clip (B)



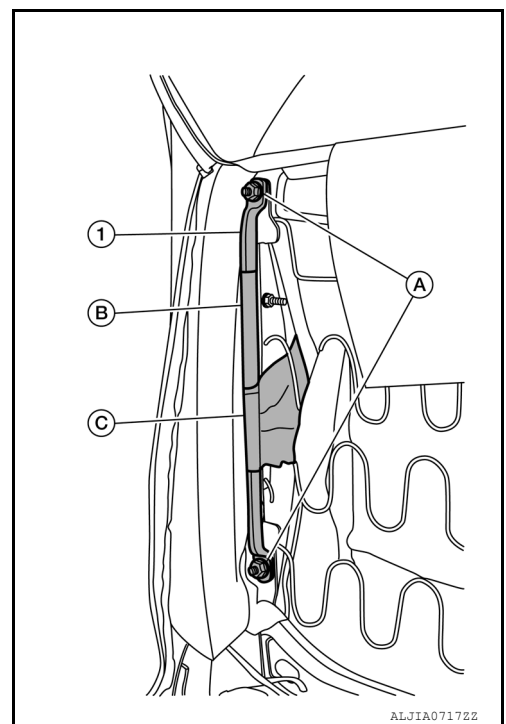
FRONT SEAT

< SERVICE INFORMATION >

6. Remove and discard the two chute rod nuts (A). Then remove the chute rod (1) by routing it through the loops in the outer chute (B) and the inner chute (C).

CAUTION:

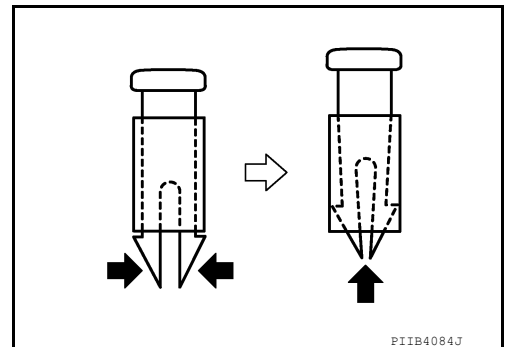
Do not reuse the chute rod nuts.



7. Press the headrest holder lock button in, then remove the headrest.
8. Remove the headrest holders by pinching the hooks together at the bottom and pulling them upward and out of the seatback.

CAUTION:

Make sure to note the position of headrest holders for proper lock/free operation after assembly.



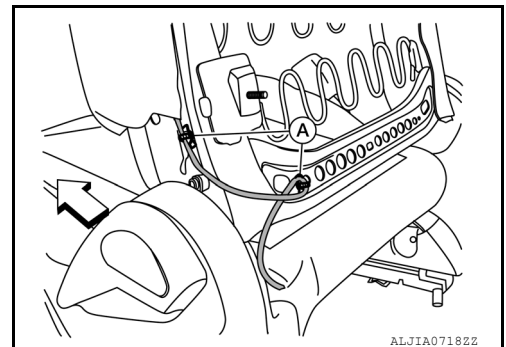
9. Push the bottom of the seatback trim and pad toward front edge of seat, away from the seatback frame, then remove the seatback trim and pad by lifting them together as an assembly.

CAUTION:

Make sure to lift the seatback trim and pad from the seatback frame slowly, or it may get torn.

10. Release the side air bag module harness clips.
 - a. Release the side air bag module harness upper clips (A) from the seatback frame assembly.

↔: Front

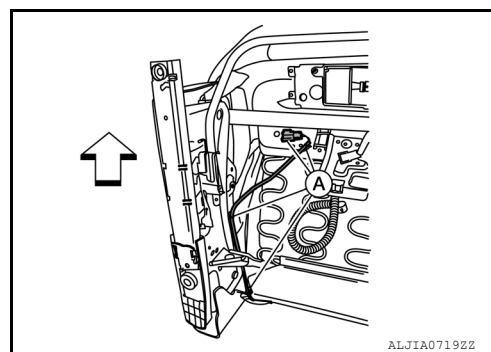


FRONT SEAT

< SERVICE INFORMATION >

- b. For passenger seat, release the side air bag module harness lower clips (A) from the seat frame assembly.

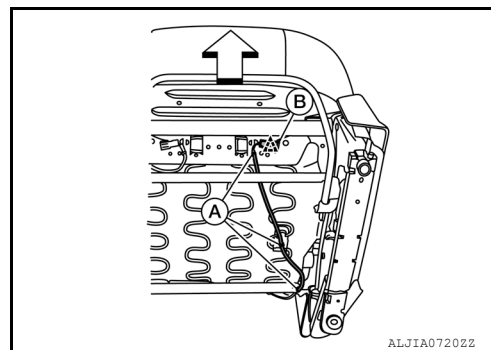
⇐: Front



- c. For driver seat, release the side air bag module harness lower clips (A) and harness connector clip (B) from the seat frame assembly.

⇐: Front

△: Clip



11. Remove the side air bag module.

- a. Route the side air bag module harness and harness clips through the opening in the seat cushion trim.

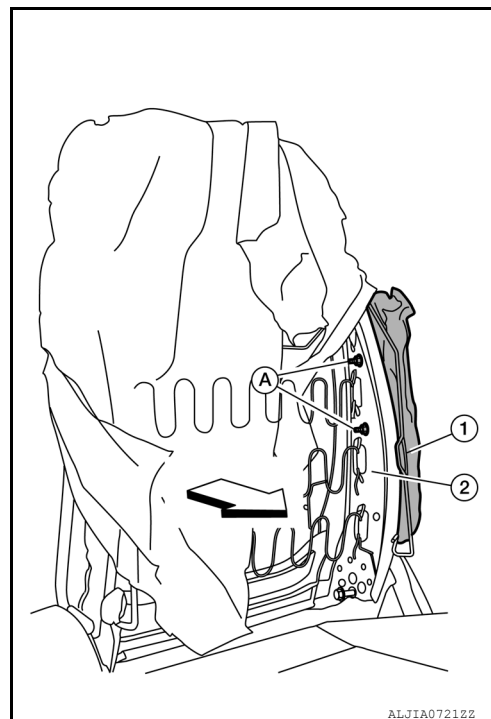
- b. Remove and discard the two side air bag module nuts (A).

CAUTION:

Do not reuse the side air bag module nuts.

- c. Remove the side air bag module (1) from the seatback frame (2).

⇐: Front



12. If necessary, separate the seatback trim from the seatback pad by cutting the center of hog rings and removing them.

NOTE:

Remove all pieces of hog rings and discard them.

Assembly

Assembly is in the reverse order of disassembly.

CAUTION:

FRONT SEAT

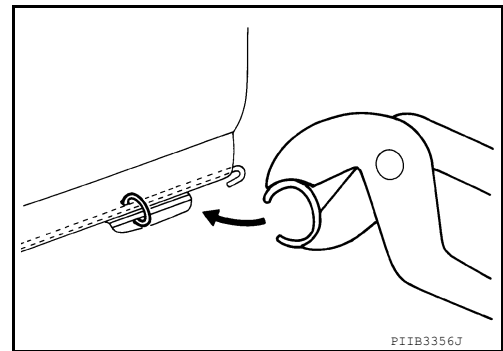
< SERVICE INFORMATION >

- If a malfunction was detected by the air bag warning lamp, after repair or replacement of the malfunction parts, reset the memory using self-diagnosis or CONSULT.
- After work is completed, check that no system malfunction is detected by air bag warning lamp.
- Always install new side air bag module nuts and side air bag chute rod nuts.
- Always route the side air bag module harness in the original location. Replace any deformed or damaged clips with the same type and color. Always install clips in the original location on the harness.
- Smooth out all wrinkles in chutes and trim during assembly.
- Inspect seatback trim, seatback pad and side air bag chutes. Replace any damaged parts.
- Replace any deformed or damaged parts.
- Replace any deformed or damaged hog rings. Make sure any old hog ring pieces are removed from seat.
- Use only one hog ring in each designated location.
- Make sure hog rings are correctly fastened around both the seatback trim and seatback pad wires.

NOTE:

Use NISSAN standard hog rings to assemble.

- Before installing headrest holders, check for their correct orientation. (Front/Rear, Right/Left)
- When installing the seatback trim, firmly press on the seams to make sure the hook and loop fasteners below the trim are fastened properly.
- Install new hog rings on the seatback trim in their original positions.



- Make sure the chute rod (1) is properly positioned and installed with the round hole opening (A) at the top and the oblong hole opening (B) at the bottom as shown.

⇐: Front

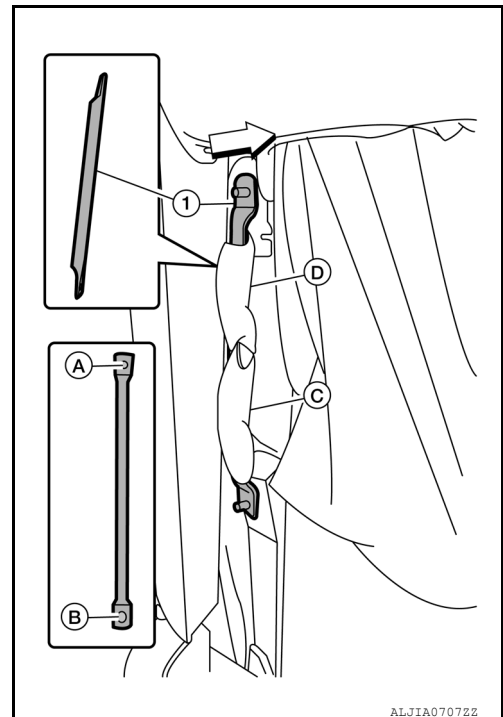
CAUTION:

- Do not reuse chute rod nuts.
- Make sure chute rod nuts are tightened to specification.

Chute rod nuts : 7.4 N·m (0.75 kg-m, 65 in-lb)

NOTE:

Make sure that both inner (C) and outer (D) chute ends are first pushed through the opening in the seatback pad.



FRONT SEAT

< SERVICE INFORMATION >

- Make sure the side air bag outer chute (A) is pulled around the out-board surface of the side air bag module (2). Make sure the side air bag inner chute (B) is pulled around the inboard surface of the side air bag module and seatback frame (5). Make sure there are no wrinkles in the chute fabric, and the chutes are not folded, twisted or pinched.

(1) Seatback pad

(3) Seatback trim

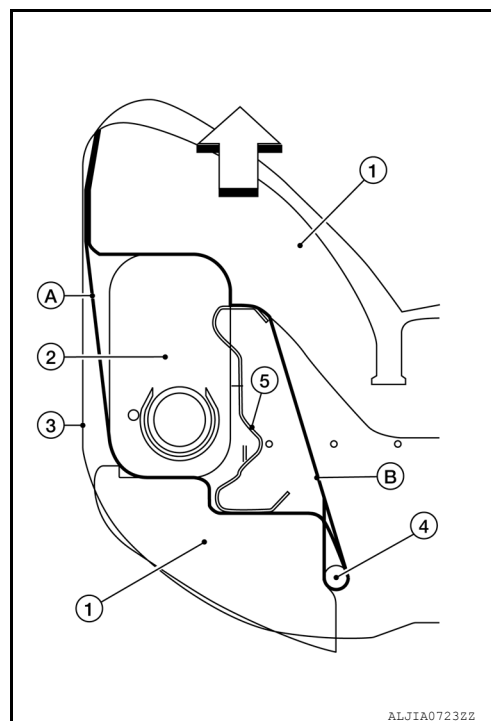
(4) Chute rod

⇐ Front

CAUTION:

- Do not reuse side air bag module nuts.
- Make sure side air bag module nuts are tightened to specification.

Side air bag module nuts : 7.4 N·m (0.75 kg-m, 65 in-lb)



REAR SEAT

< SERVICE INFORMATION >

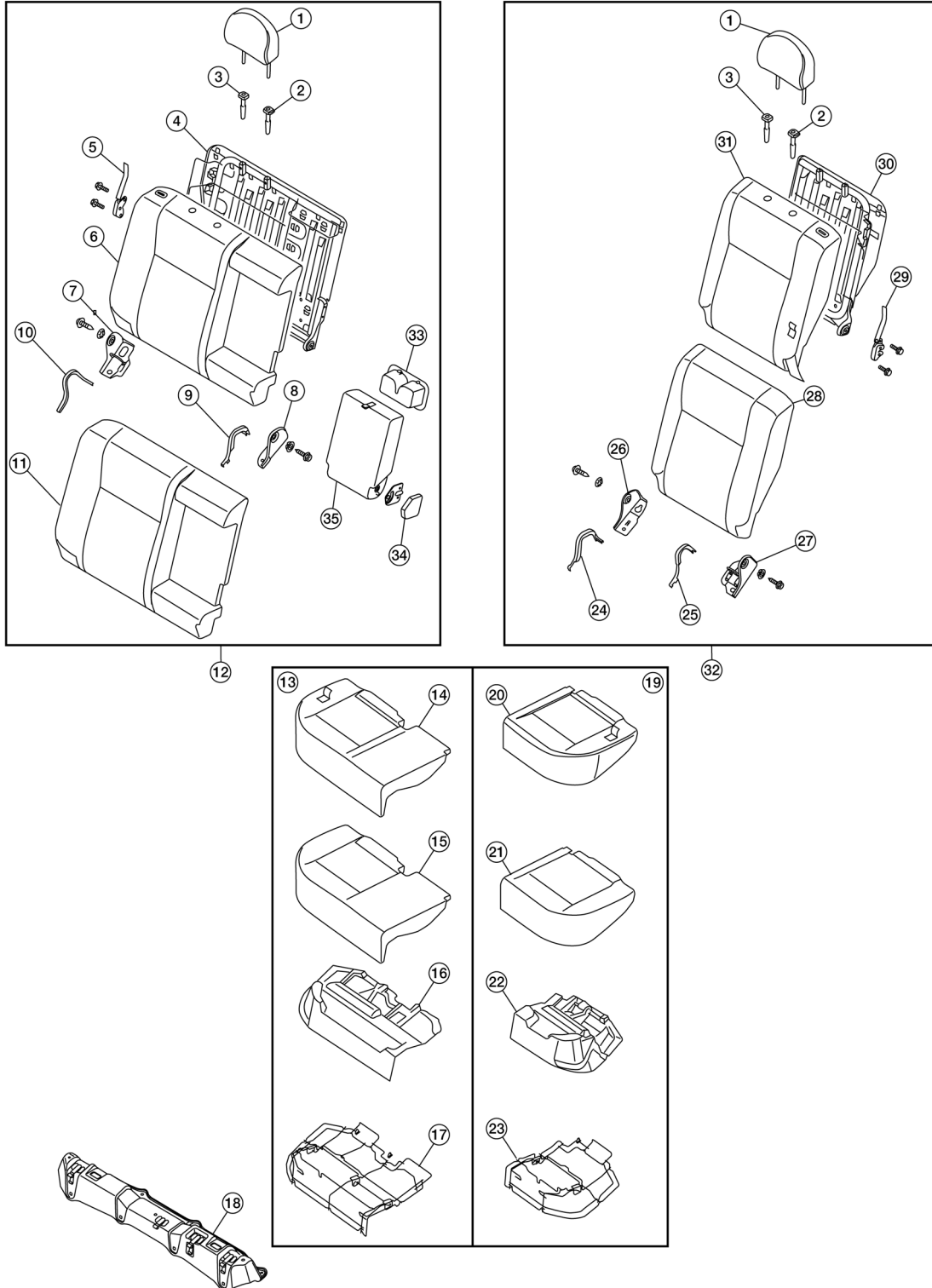
REAR SEAT

Exploded View - 60:40 Split Fold Down

INFOID:000000007402310

60:40 SPLIT FOLD DOWN SEAT

SEC. 880



- 1. Headrest
- 4. RH seatback frame

- 2. Headrest holder (lock)
- 5. RH seat lock assembly

- 3. Headrest holder (free)
- 6. RH seatback trim

A
B
C
D
E
F
G
H
SE
J
K
L
M
N
O
P

REAR SEAT

< SERVICE INFORMATION >

- | | | |
|------------------------------|---------------------------|--------------------------------|
| 7. RH outer seat bracket | 8. RH inner seat bracket | 9. RH inner bracket cover |
| 10. RH outer bracket cover | 11. RH seatback trim | 12. RH seat assembly |
| 13. RH seat cushion assembly | 14. RH seat cushion trim | 15. RH seat cushion foam |
| 16. RH seat cushion pad | 17. RH seat cushion frame | 18. Rear seat bracket assembly |
| 19. LH seat cushion assembly | 20. LH seat cushion trim | 21. LH seat cushion foam |
| 22. LH seat cushion pad | 23. LH seat cushion frame | 24. LH inner bracket cover |
| 25. LH outer bracket cover | 26. LH inner seat bracket | 27. LH outer seat bracket |
| 28. LH seatback pad | 29. LH seat lock assembly | 30. LH seatback frame |
| 31. LH seatback trim | 32. LH seat assembly | 33. Cup holder |
| 34. Armrest cover | 35. Armrest | |

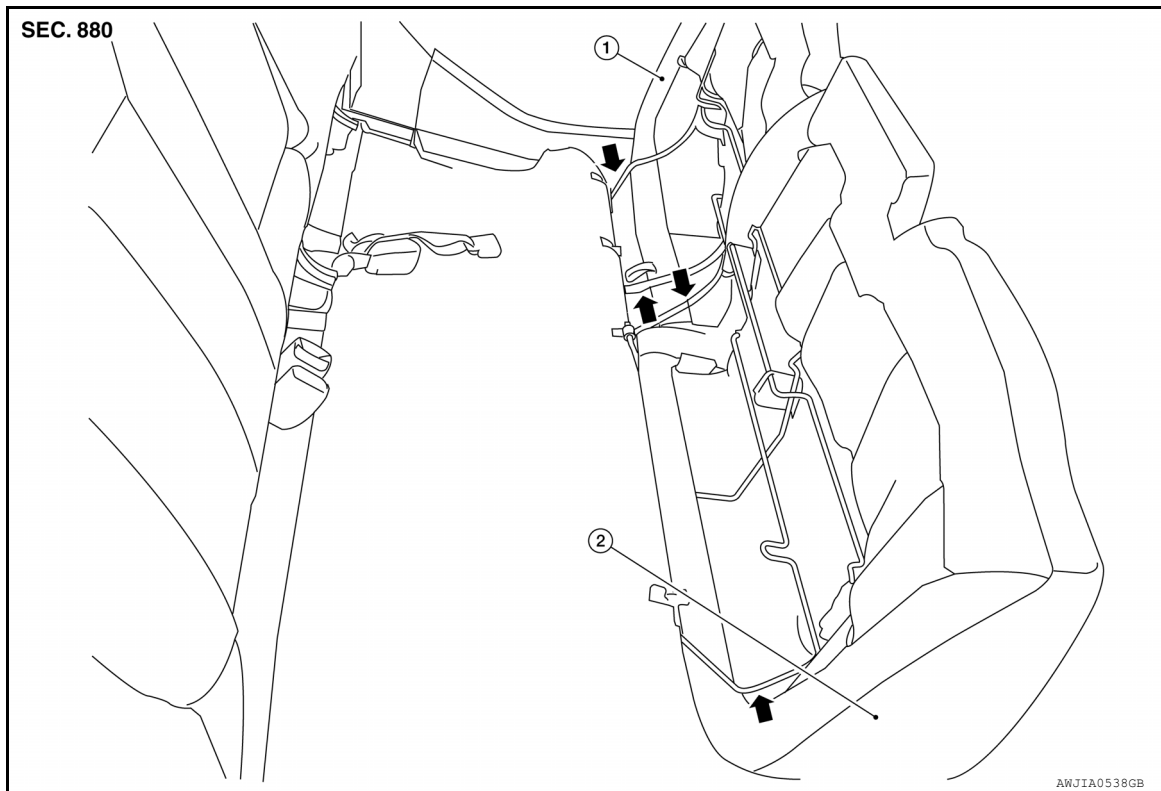
Removal and Installation - 60:40 Split Fold Down

INFOID:000000007402311

CAUTION:

When removing and installing, use shop cloths to protect parts from damage.

60:40 SPLIT FOLD DOWN SEAT CUSHION



1. LH rear seat cushion
2. RH rear seat cushion

Removal

1. Lift up on the rear of the LH and RH seat cushions and fold forward toward the front of the vehicle.
2. Push the cushion wires inward to disengage from the hinge brackets and remove the seat cushion.

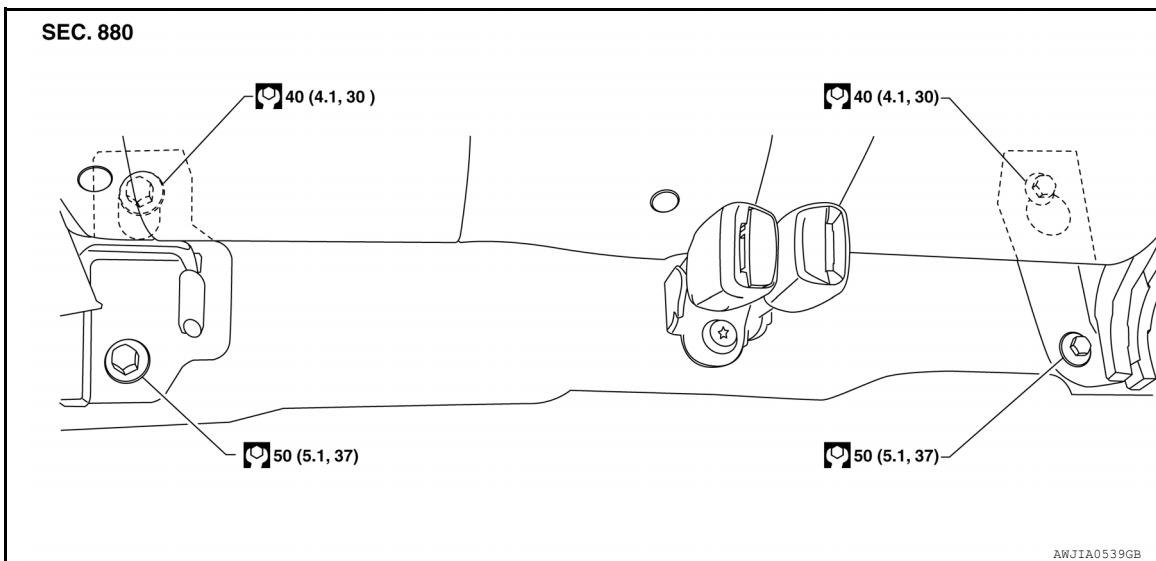
Installation

Installation is in the reverse order of removal.

REAR SEAT

< SERVICE INFORMATION >

60:40 SPLIT FOLD DOWN RIGHT SEATBACK



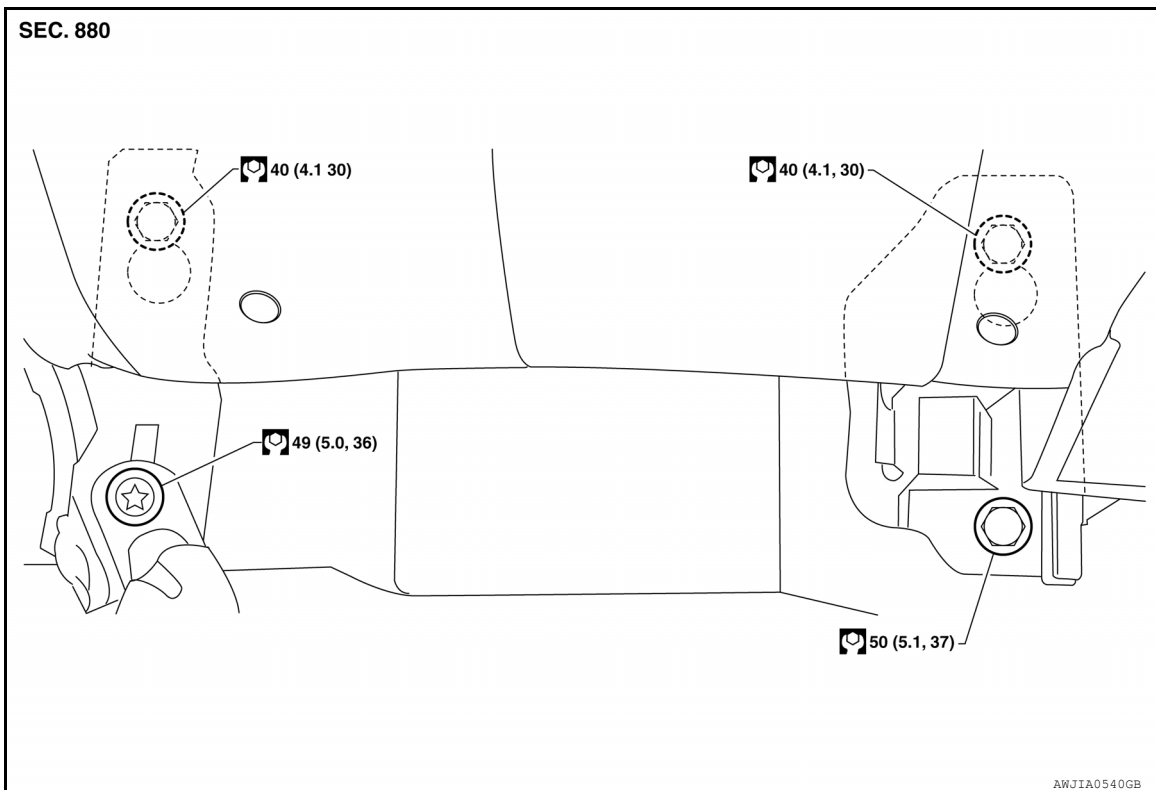
Removal

1. Lift up on the rear of the right seat cushion and fold forward toward the front of the vehicle.
2. Remove the lower seatback bolts from the right rear seat back brackets.
3. Slide rear seat back brackets toward the rear of the vehicle.
4. Lift the right seatback and remove from the vehicle.

Installation

Installation is in the reverse order of removal.

60:40 SPLIT FOLD DOWN LEFT SEATBACK



Removal

1. Lift up on the rear of the left seat cushion and fold forward toward the front of the vehicle.
2. Remove the lower seatback bolts from the left rear seat back brackets.
3. Slide rear seat back brackets toward the rear of the vehicle.

A
B
C
D
E
F
G
H
SE
J
K
L
M
N
O
P

REAR SEAT

< SERVICE INFORMATION >

4. Lift the left seatback and remove from the vehicle.

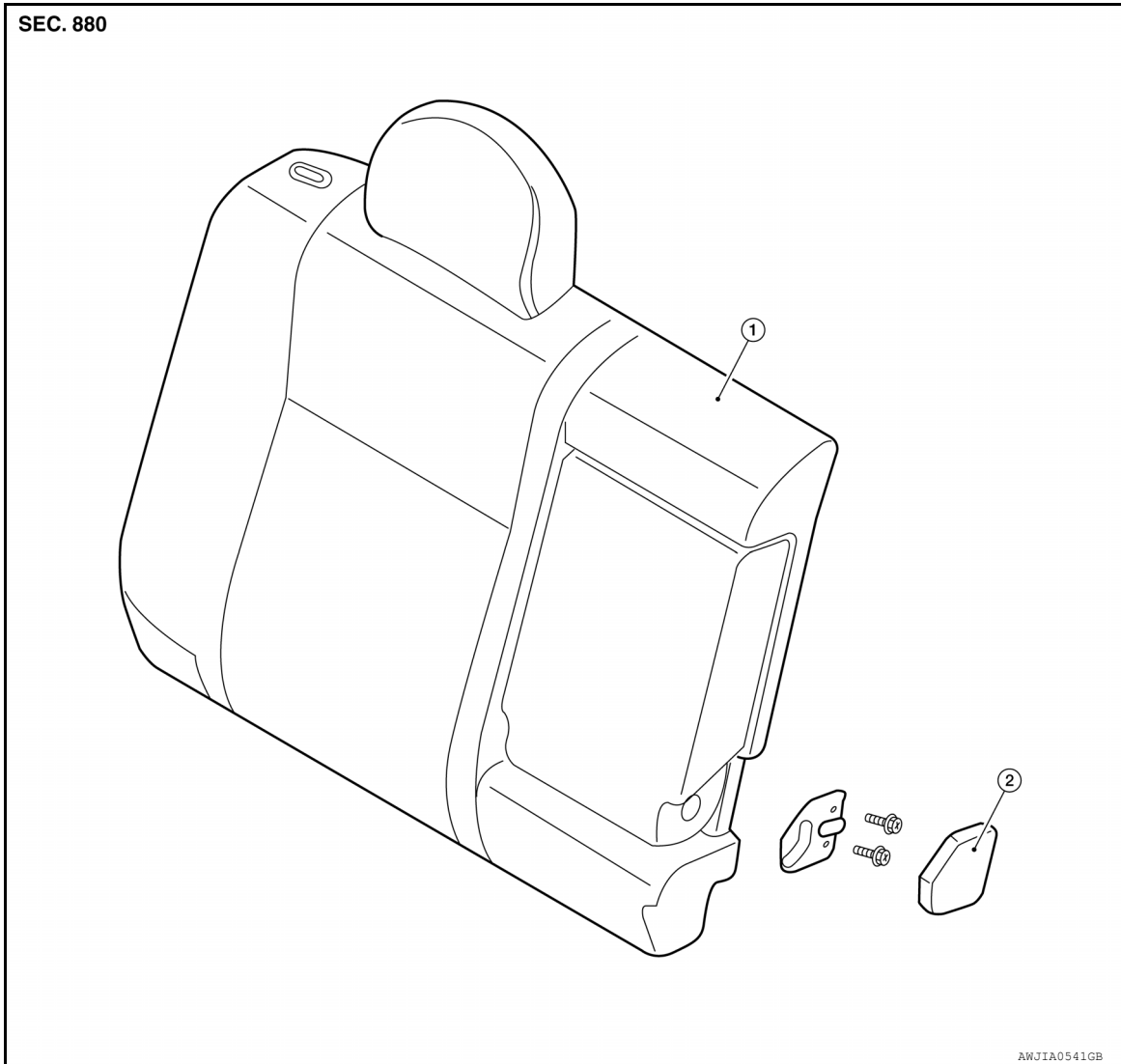
Installation

Installation is in the reverse order of removal.

Disassembly and Assembly - 60:40 Split Fold Down

INFOID:000000007402312

60:40 SPLIT FOLD DOWN SEAT ARMREST



1. RH rear seatback

2. Armrest cover

Disassembly of Armrest

1. Fold up the backside of the seatback and then remove the armrest cover.
2. Remove the armrest from the seatback.

Assembly of Armrest

Assembly is in the reverse order of disassembly.

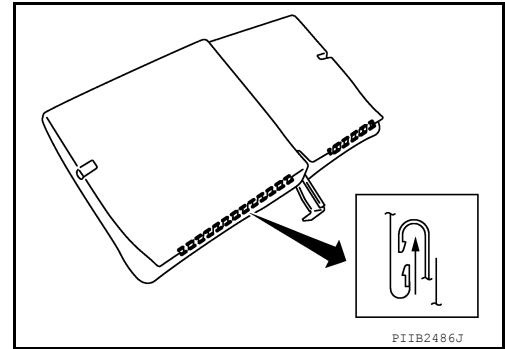
Disassembly of Seatback Trim and Pad

1. Remove the headrest.

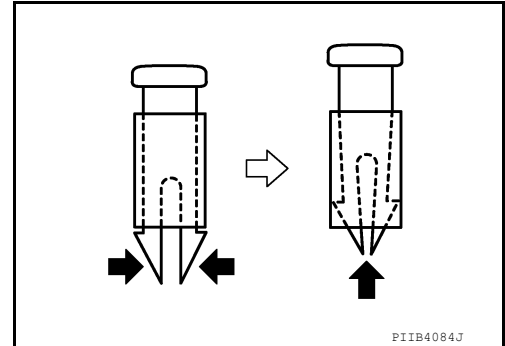
REAR SEAT

< SERVICE INFORMATION >

2. Remove the retainer under the back of seatback.



3. Remove the headrest holder.



4. Remove the armrest.

5. Remove the seatback trim.

6. Remove the seatback pad from the seatback frame.

Assembly of Seatback Trim and Pad

Assembly is in the reverse order of disassembly.

- Before installing headrest holder, check its orientation (front/rear and right/left).

Disassembly of Seat Cushion Trim and Pad

Remove the hog rings to separate the trim and pad.

Assembly of Seat Cushion Trim and Pad

Assembly is in the reverse order of disassembly.

A
B
C
D
E
F
G
H
SE
J
K
L
M
N
O
P

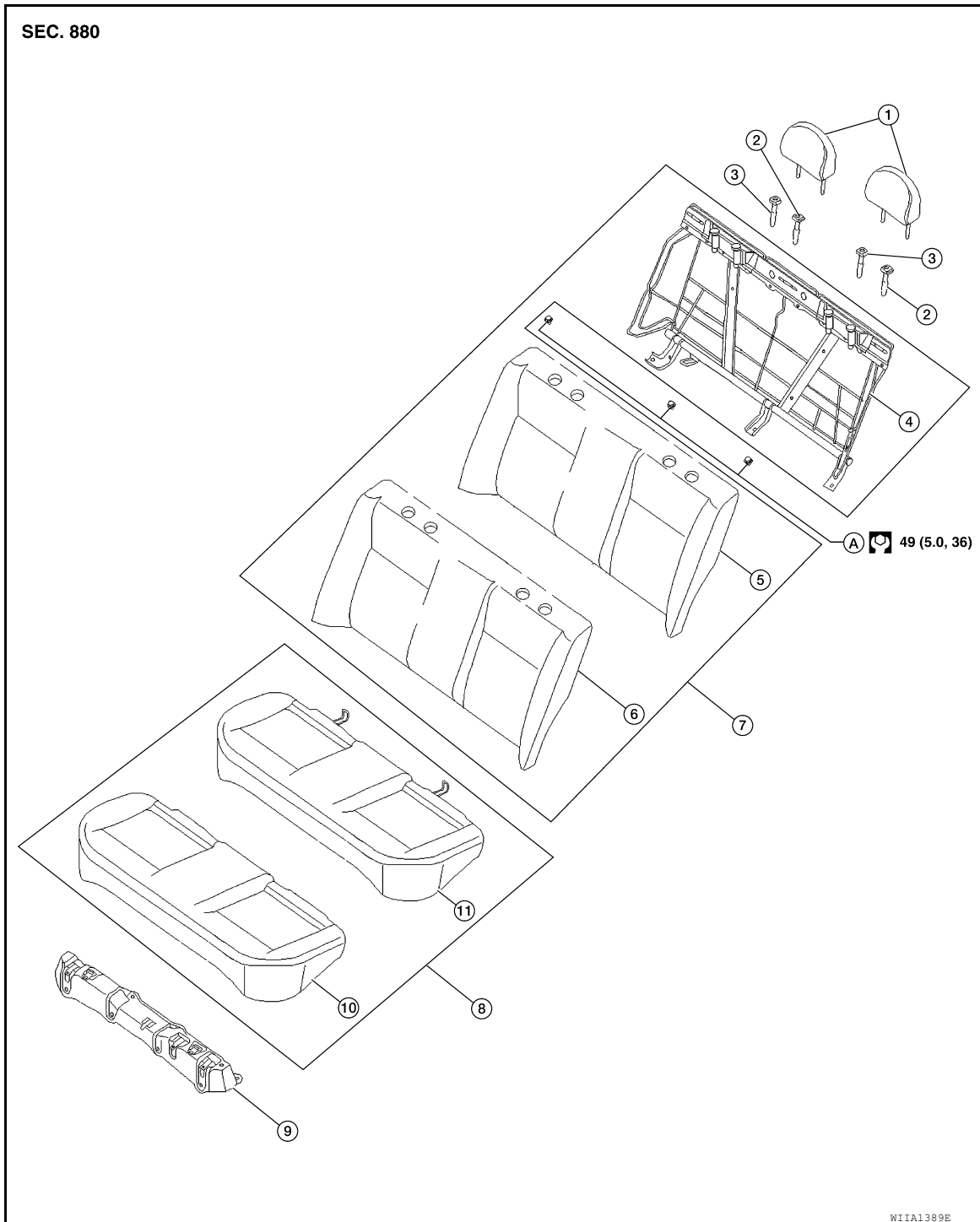
REAR SEAT

< SERVICE INFORMATION >

Exploded View - Fixed Back Seat

INFOID:000000007402313

FIXED BACK SEAT



- | | | |
|-----------------------|----------------------------|---------------------------------------|
| 1. Headrest | 2. Headrest holder (lock) | 3. Headrest holder (free) |
| 4. Seatback frame | 5. Seatback pad | 6. Seatback trim |
| 7. Seatback assembly | 8. Seat cushion assembly | 9. Rear seat cushion bracket assembly |
| 10. Seat cushion trim | 11. Seat cushion pad/frame | A. Seatback frame bolts |

Removal and Installation - Fixed Back Seat

INFOID:000000007402314

CAUTION:

When removing and installing, use shop cloths to protect parts from damage.

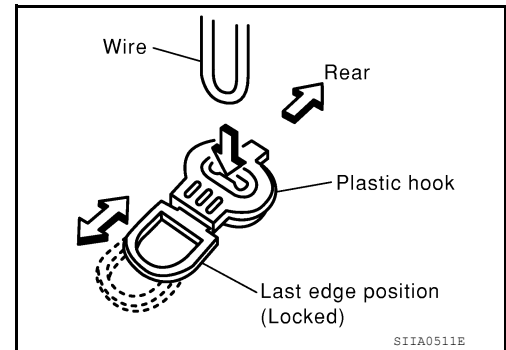
REAR SEAT

< SERVICE INFORMATION >

FIXED BACK SEAT CUSHION

Removal

1. Remove the rear seat cushion trim and pad.
 - Pull the lock at the front bottom of the seat cushion forward (one for each side), and pull the seat cushion upward to release the wire from the plastic hook, then pull the seat cushion forward to remove.



Installation

Installation is in the reverse order of removal.

FIXED SEATBACK

Removal

1. Remove the lower seatback bolts.
2. Lift and remove fixed rear seatback from rear parcel shelf hanger.

Installation

Installation is in the reverse order of removal.

A
B
C
D
E
F
G
H
SE
J
K
L
M
N
O
P