

**SECTION VTL**  
**VENTILATION SYSTEM**

A  
B  
C  
D  
E  
F  
G  
H  
VTL  
J  
K  
L  
M  
N  
O  
P

**CONTENTS**

<b>PRECAUTION</b> .....	2	<b>BLOWER MOTOR</b> .....	9
<b>PRECAUTIONS</b> .....	2	Component .....	9
Precaution for Supplemental Restraint System (SRS) "AIR BAG" and "SEAT BELT PRE-TENSIONER" .....	2	Removal and Installation .....	9
Precaution for Working with HFC-134a (R-134a).....	2	<b>VARIABLE BLOWER CONTROL</b> .....	10
Precaution for Work .....	3	Removal and Installation .....	10
<b>PREPARATION</b> .....	4	<b>FRONT BLOWER MOTOR RESISTOR</b> .....	11
<b>PREPARATION</b> .....	4	Removal and Installation .....	11
Special Service Tool .....	4	<b>HEATER &amp; COOLING UNIT ASSEMBLY</b> .....	12
Commercial Service Tool .....	4	Component .....	12
<b>SYSTEM DESCRIPTION</b> .....	5	Removal and Installation .....	12
<b>IN-CABIN MICROFILTER</b> .....	5	<b>EVAPORATOR</b> .....	14
Description .....	5	Removal and Installation .....	14
<b>PERIODIC MAINTENANCE</b> .....	6	<b>HEATER CORE</b> .....	16
<b>IN-CABIN MICROFILTER</b> .....	6	Component .....	16
Removal and Installation .....	6	Removal and Installation .....	16
<b>REMOVAL AND INSTALLATION</b> .....	7	<b>INTAKE DOOR MOTOR</b> .....	17
<b>CONTROL UNIT</b> .....	7	Removal and Installation .....	17
Removal and Installation .....	7	<b>MODE DOOR MOTOR</b> .....	18
<b>INTAKE SENSOR</b> .....	8	Removal and Installation .....	18
Removal and Installation .....	8	<b>AIR MIX DOOR MOTOR</b> .....	19
		Removal and Installation .....	19
		<b>DUCTS AND GRILLES</b> .....	20
		Component .....	20
		Removal and Installation .....	21

# PRECAUTIONS

< PRECAUTION >

## PRECAUTION

### PRECAUTIONS

#### Precaution for Supplemental Restraint System (SRS) "AIR BAG" and "SEAT BELT PRE-TENSIONER"

INFOID:000000007359746

The Supplemental Restraint System such as "AIR BAG" and "SEAT BELT PRE-TENSIONER", used along with a front seat belt, helps to reduce the risk or severity of injury to the driver and front passenger for certain types of collision. This system includes seat belt switch inputs and dual stage front air bag modules. The SRS system uses the seat belt switches to determine the front air bag deployment, and may only deploy one front air bag, depending on the severity of a collision and whether the front occupants are belted or unbelted. Information necessary to service the system safely is included in the SR and SB section of this Service Manual.

#### **WARNING:**

- To avoid rendering the SRS inoperative, which could increase the risk of personal injury or death in the event of a collision which would result in air bag inflation, all maintenance must be performed by an authorized NISSAN/INFINITI dealer.
- Improper maintenance, including incorrect removal and installation of the SRS, can lead to personal injury caused by unintentional activation of the system. For removal of Spiral Cable and Air Bag Module, see the SR section.
- Do not use electrical test equipment on any circuit related to the SRS unless instructed to in this Service Manual. SRS wiring harnesses can be identified by yellow and/or orange harnesses or harness connectors.

#### PRECAUTIONS WHEN USING POWER TOOLS (AIR OR ELECTRIC) AND HAMMERS

#### **WARNING:**

- When working near the Airbag Diagnosis Sensor Unit or other Airbag System sensors with the Ignition ON or engine running, DO NOT use air or electric power tools or strike near the sensor(s) with a hammer. Heavy vibration could activate the sensor(s) and deploy the air bag(s), possibly causing serious injury.
- When using air or electric power tools or hammers, always switch the Ignition OFF, disconnect the battery, and wait at least 3 minutes before performing any service.

#### Precaution for Working with HFC-134a (R-134a)

INFOID:000000007359747

#### **WARNING:**

- CFC-12 (R-12) refrigerant and HFC-134a (R-134a) refrigerant are not compatible. If the refrigerants are mixed compressor failure is likely to occur. Refer to [HA-4, "Contaminated Refrigerant"](#). To determine the purity of HFC-134a (R-134a) in the vehicle and recovery tank, use refrigerant recovery/recycling equipment and refrigerant identifier.
- Use only specified oil for the HFC-134a (R-134a) A/C system and HFC-134a (R-134a) components. If oil other than that specified is used, compressor failure is likely to occur.
- The specified HFC-134a (R-134a) oil rapidly absorbs moisture from the atmosphere. The following handling precautions must be observed:
  - When removing refrigerant components from a vehicle, immediately cap (seal) the component to minimize the entry of moisture from the atmosphere.
  - When installing refrigerant components to a vehicle, do not remove the caps (unseal) until just before connecting the components. Connect all refrigerant loop components as quickly as possible to minimize the entry of moisture into system.
  - Only use the specified oil from a sealed container. Immediately reseal containers of oil. Without proper sealing, oil will become moisture saturated and should not be used.
  - Avoid breathing A/C refrigerant and oil vapor or mist. Exposure may irritate eyes, nose and throat. Remove HFC-134a (R-134a) from the A/C system using certified service equipment meeting requirements of SAE J2210 [HFC-134a (R-134a) recycling equipment], or SAE J2209 [HFC-134a (R-134a) recovery equipment]. If accidental system discharge occurs, ventilate work area before resuming service. Additional health and safety information may be obtained from refrigerant and oil manufacturers.
- Do not allow the refrigerant oil to come in contact with styrofoam parts. Damage may result.

# PRECAUTIONS

< PRECAUTION >

## Precaution for Work

INFOID:000000007359749

- When removing or disassembling each component, be careful not to damage or deform it. If a component may be subject to interference, be sure to protect it with a shop cloth.
- When removing (disengaging) components with a screwdriver or similar tool, be sure to wrap the component with a shop cloth or vinyl tape to protect it.
- Protect the removed parts with a shop cloth and prevent them from being dropped.
- Replace a deformed or damaged clip.
- If a part is specified as a non-reusable part, always replace it with new one.
- Be sure to tighten bolts and nuts securely to the specified torque.
- After installation is complete, be sure to check that each part works properly.
- Follow the steps below to clean components.
  - Water soluble dirt: Dip a soft cloth into lukewarm water, and wring the water out of the cloth to wipe the dirty area.  
Then rub with a soft and dry cloth.
  - Oily dirt: Dip a soft cloth into lukewarm water with mild detergent (concentration: within 2 to 3%), and wipe the dirty area.  
Then dip a cloth into fresh water, and wring the water out of the cloth to wipe the detergent off. Then rub with a soft and dry cloth.
- Do not use organic solvent such as thinner, benzene, alcohol, or gasoline.
- For genuine leather seats, use a genuine leather seat cleaner.

A  
B  
C  
D  
E  
F  
G  
H  
J  
K  
L  
M  
N  
O  
P

VTL

# PREPARATION

< PREPARATION >

## PREPARATION

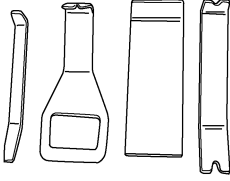
### PREPARATION

#### Special Service Tool

INFOID:000000007359750

The actual shapes of Kent-Moore tools may differ from those of special service tools illustrated here.

Tool number (Kent-Moore No.) Tool name	Description
— (J-46534) Trim tool set	Removing trim components




AWJIA04832Z

#### Commercial Service Tool

INFOID:000000007359751

Tool name	Description
Power tool	Removing bolts, nuts and screws



PIIB1407E

# IN-CABIN MICROFILTER

< SYSTEM DESCRIPTION >

## SYSTEM DESCRIPTION

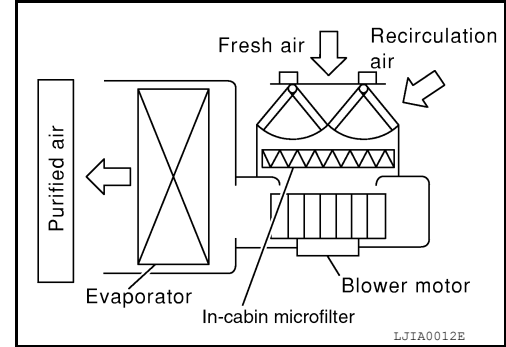
### IN-CABIN MICROFILTER

#### Description

INFOID:000000007359752

#### FUNCTION

The air inside the passenger compartment is filtered by the in-cabin microfilters when the heater or A/C controls are set on either the recirculation or fresh mode. The two in-cabin microfilters are located in the front heater and cooling unit assembly.



#### REPLACEMENT TIMING

Replacement of the two in-cabin microfilters is recommended on a regular interval depending on the driving conditions. Refer to [MA-8. "Introduction of Periodic Maintenance"](#). It may also be necessary to replace the two in-cabin microfilters as part of a component replacement if the in-cabin microfilters are damaged.

A  
B  
C  
D  
E  
F  
G  
H  
J  
K  
L  
M  
N  
O  
P

VTL

# IN-CABIN MICROFILTER

< PERIODIC MAINTENANCE >

## PERIODIC MAINTENANCE

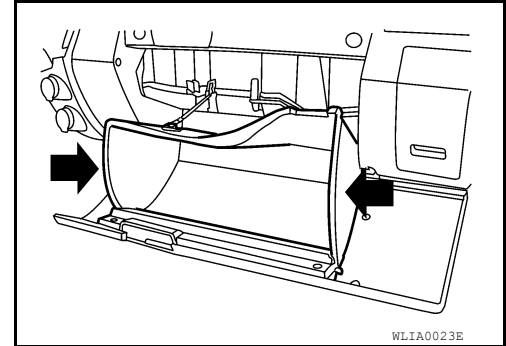
### IN-CABIN MICROFILTER

#### Removal and Installation

INFOID:000000007359753

#### REPLACEMENT PROCEDURE

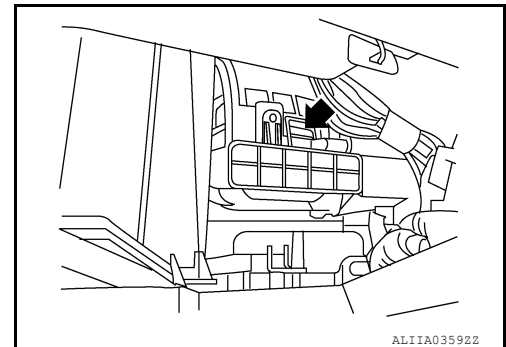
1. Open the lower glove box and press in on the sides so that it will open completely allowing it to hang by the cord.



2. Gently depress the tab and remove the in-cabin microfilter cover as shown.

**CAUTION:**

Use care when depressing the tab to avoid damaging it.

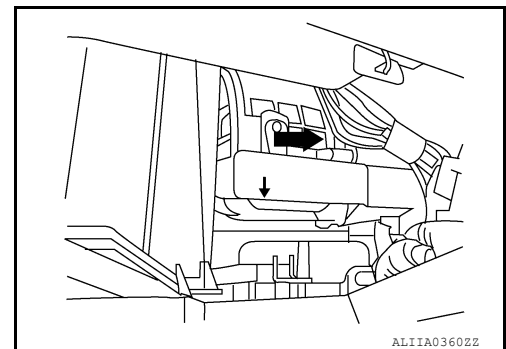


3. Remove the in-cabin microfilters from the front heater and cooling unit housing.

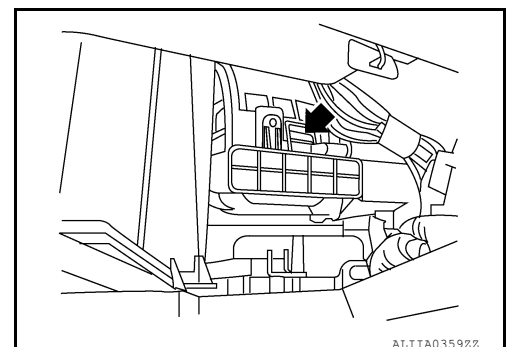
4. Insert the first new in-cabin microfilter into the front heater and cooling unit housing and slide it over to the right. Insert the second new in-cabin microfilter into the front heater and cooling unit housing.

**NOTE:**

The in-cabin microfilters are marked with air flow arrows. The end of the microfilter with the arrow should face the rear of the vehicle. The arrows should point downward.



5. Install the in-cabin microfilter cover, make sure the tab is locked in place as shown.



6. Close the lower glove box completely.

# CONTROL UNIT

< REMOVAL AND INSTALLATION >

## REMOVAL AND INSTALLATION

### CONTROL UNIT

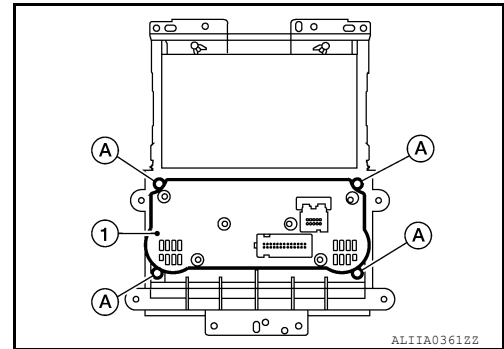
#### Removal and Installation

INFOID:000000007359754

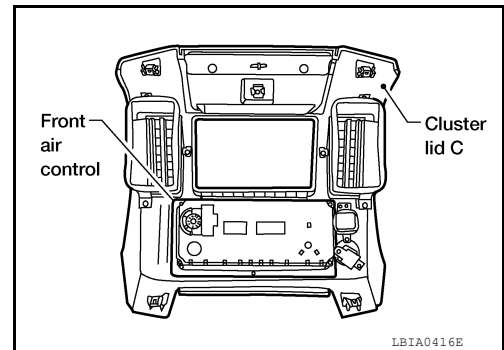
#### FRONT AIR CONTROL

##### Removal

1. Remove cluster lid C. Refer to [IP-10. "Exploded View"](#).
2. Remove the front air control from cluster lid C.
  - For type 1, remove the four screws (A) securing the front air control (1) to cluster lid C.



- For type 2, remove the four screws securing the front air control to cluster lid C.



##### Installation

Installation is in the reverse order of removal.

A  
B  
C  
D  
E  
F  
G  
H  
VTL  
J  
K  
L  
M  
N  
O  
P

# INTAKE SENSOR

< REMOVAL AND INSTALLATION >

## INTAKE SENSOR

### Removal and Installation

INFOID:000000007359755

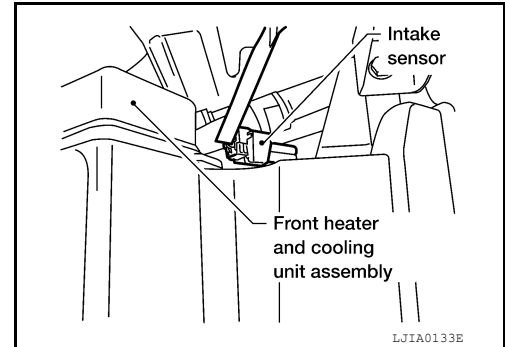
#### REMOVAL

1. Remove the front kick plate. Refer to [INT-18. "Removal and Installation"](#).
2. Remove the front pillar upper finisher. Refer to [INT-18. "Removal and Installation"](#).
3. Remove the upper glove box. Refer to [IP-19. "Removal and Installation"](#).
4. Disconnect the intake sensor electrical connector.

**NOTE:**

The intake sensor is located on the top of the front heater and cooling unit assembly next to the A/C evaporator cover.

5. Twist the intake sensor to remove the intake sensor from the front heater and cooling unit assembly.



#### INSTALLATION

Installation is in the reverse order of removal.



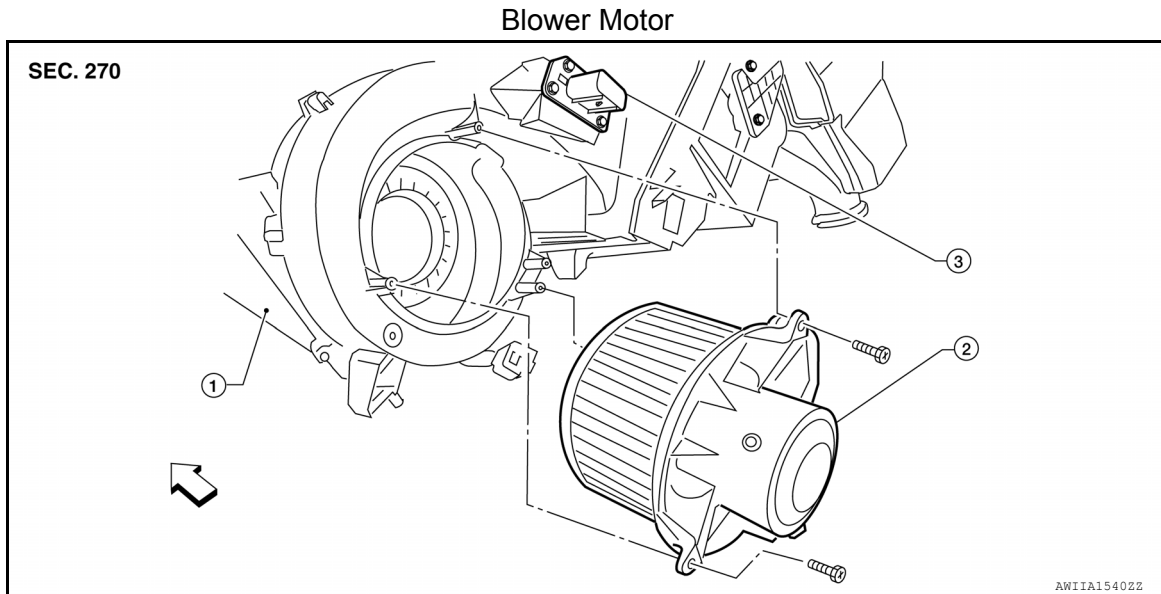
# BLOWER MOTOR

< REMOVAL AND INSTALLATION >

## BLOWER MOTOR

Component

INFOID:000000007359756



1. Heater and cooling unit assembly      2. Blower motor      3. Variable blower control / Blower motor resistor

↶ Vehicle front

## Removal and Installation

INFOID:000000007359757

VTL

### FRONT BLOWER MOTOR

#### Removal

1. Remove the instrument lower panel RH and lower glove box assembly. Refer to [IP-20, "Removal and Installation"](#).
2. Disconnect the blower motor electrical connector.
3. Remove the three blower motor screws and the front blower motor.
4. Remove the blower motor wheel.

#### Installation

Installation is in the reverse order of removal.

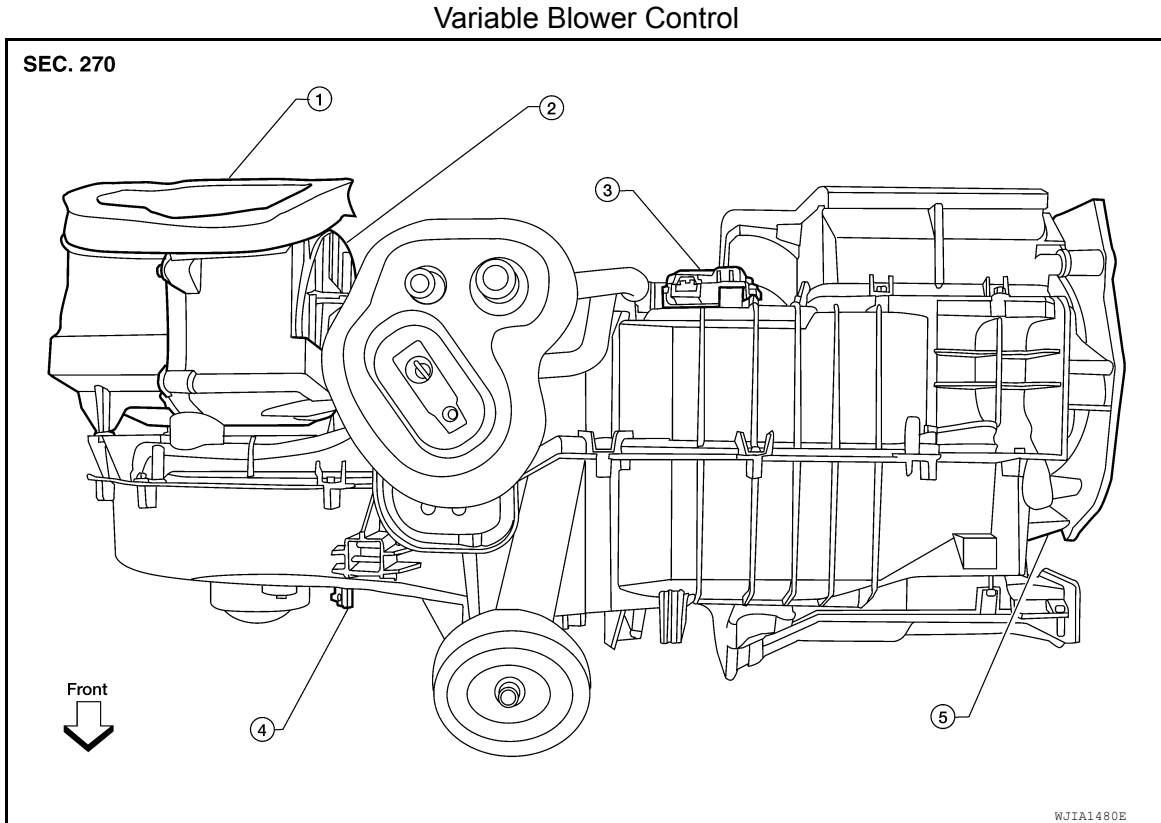
# VARIABLE BLOWER CONTROL

< REMOVAL AND INSTALLATION >

## VARIABLE BLOWER CONTROL

### Removal and Installation

INFOID:000000007359758



- |                                     |                      |                       |
|-------------------------------------|----------------------|-----------------------|
| 1. Heater and cooling unit assembly | 2. Intake door motor | 3. Air mix door motor |
| 4. Variable blower control          | 5. Mode door motor   |                       |

### REMOVAL

1. Disconnect the variable blower control electrical connector.
2. Remove the two variable blower control screws and the variable blower control.

### INSTALLATION

Installation is in the reverse order of removal.

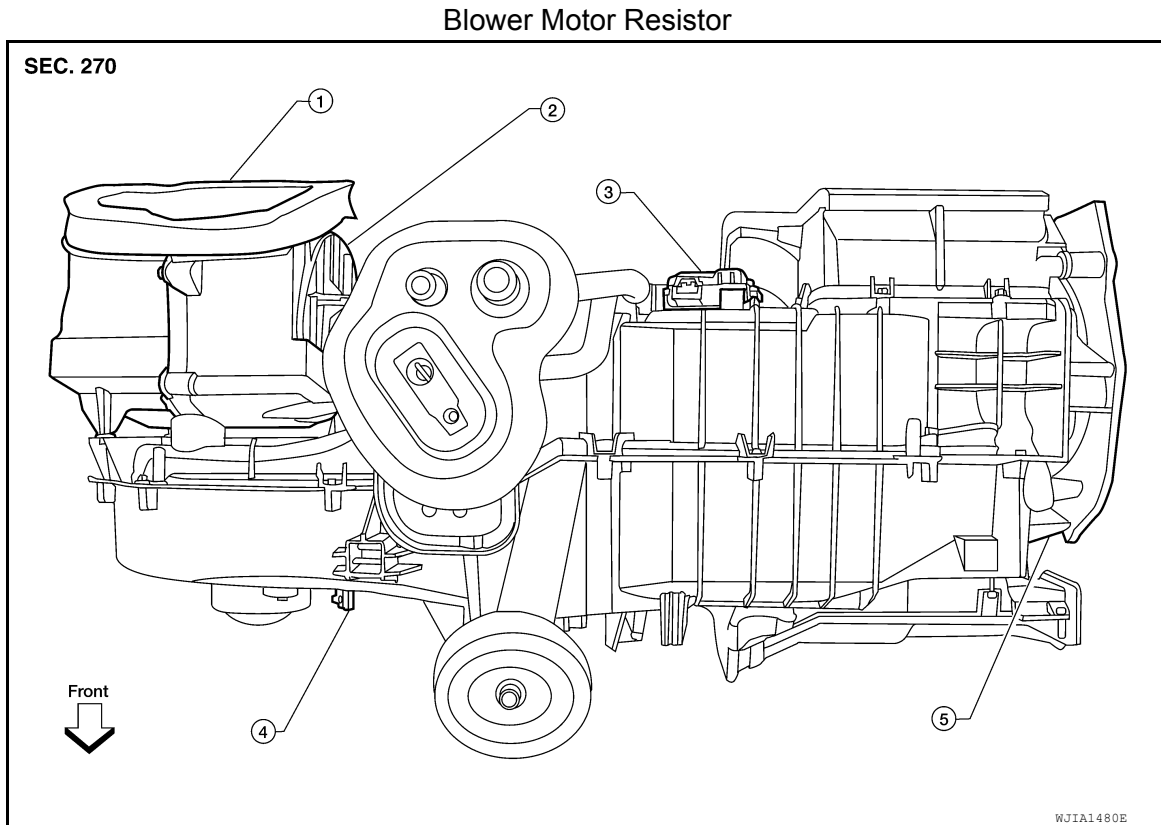
# FRONT BLOWER MOTOR RESISTOR

< REMOVAL AND INSTALLATION >

## FRONT BLOWER MOTOR RESISTOR

### Removal and Installation

INFOID:000000007359759



- |                                     |                      |                       |
|-------------------------------------|----------------------|-----------------------|
| 1. Heater and cooling unit assembly | 2. Intake door motor | 3. Air mix door motor |
| 4. Blower motor resistor            | 5. Mode door motor   |                       |

### REMOVAL

1. Disconnect the blower motor resistor electrical connector.
2. Remove the two blower motor resistor screws and the blower motor resistor.

### INSTALLATION

Installation is in the reverse order of removal.

A  
B  
C  
D  
E  
F  
G  
H  
VTL  
J  
K  
L  
M  
N  
O  
P

# HEATER & COOLING UNIT ASSEMBLY

< REMOVAL AND INSTALLATION >

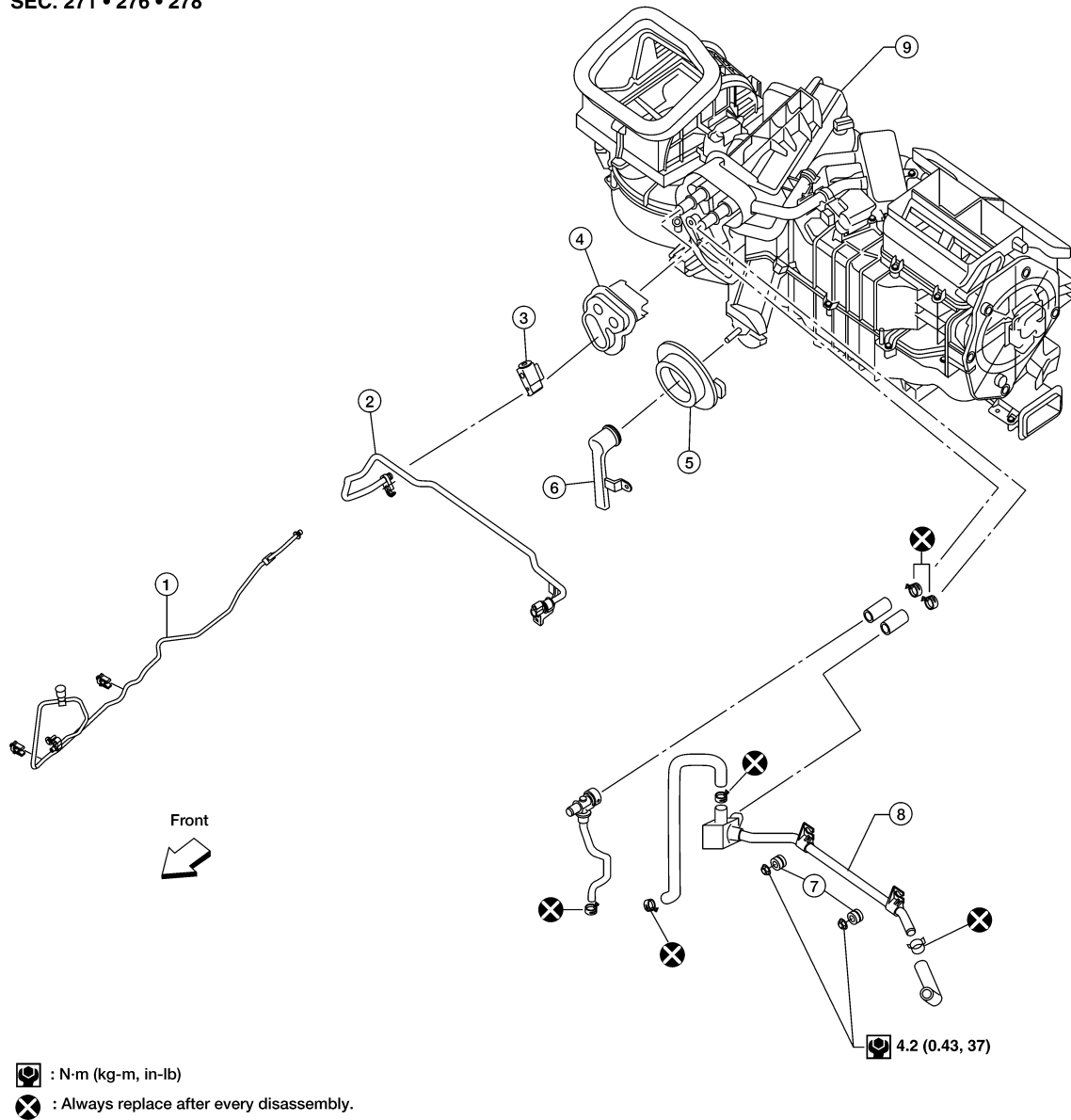
## HEATER & COOLING UNIT ASSEMBLY

Component

INFOID:000000007359760

### Heater and Cooling Unit Assembly

SEC. 271 • 276 • 278



WJIA1621E

- |   |                           |                                     |
|---|---------------------------|-------------------------------------|
| 1. High-pressure A/C pipe                   | 2. Low-pressure A/C pipe  | 3. Expansion valve                  |
| 4. Heater core and evaporator pipes grommet | 5. A/C drain hose grommet | 6. A/C drain hose                   |
| 7. Heater core pipe mounts                  | 8. Heater core pipes      | 9. Heater and cooling unit assembly |

#### NOTE:

When removing components such as hoses, tubes/lines, etc., cap or plug openings to prevent fluid from spilling.

### Removal and Installation

INFOID:000000007359761

#### HEATER AND COOLING UNIT ASSEMBLY

##### Removal

# HEATER & COOLING UNIT ASSEMBLY

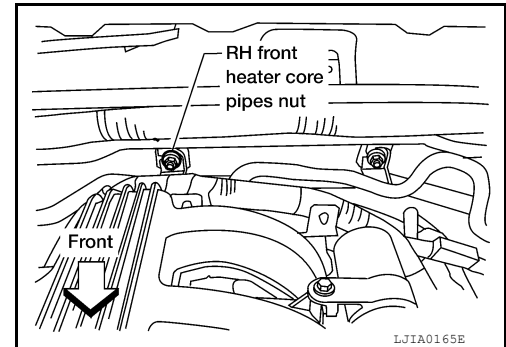
## < REMOVAL AND INSTALLATION >

1. Discharge the refrigerant from the A/C system. Refer to [HA-28, "HFC-134a \(R-134a\) Service Procedure"](#).
2. Drain the coolant from the engine cooling system. Refer to [CO-11, "Changing Engine Coolant"](#).
3. Disconnect the battery negative and positive terminals.

**CAUTION:**

**Before servicing, turn the ignition switch off, disconnect both battery terminals, then wait at least three minutes.**

4. Remove the heater core pipes RH nut.
5. Disconnect the heater core hoses from the heater core.
6. Disconnect the high- and low-pressure A/C pipes from the front expansion valve.
7. Remove the instrument panel. Refer to [IP-11, "Removal and Installation"](#).
8. Remove the center console. Refer to [IP-23, "Removal and Installation"](#).
9. Remove the two front floor ducts. Refer to [VTL-20, "Component"](#).
10. Remove the steering column. Refer to [ST-12, "Removal and Installation"](#).



11. Disconnect the instrument panel wire harness at the RH and LH in-line connector brackets, and the fuse block (SMJ) harness connectors.
12. Remove the covers then remove the three steering member bolts from each side to disconnect the steering member from the vehicle body.
13. Remove the heater and cooling unit assembly attached to the steering member from the vehicle.

**CAUTION:**

**Use care not to damage the seats and interior trim panels when removing the heater and cooling unit assembly with it attached to the steering member.**

14. Remove the front heater and cooling unit assembly from the steering member.

### Installation

Installation is in the reverse order of removal.

- Fill the engine cooling system with the specified coolant mixture. Refer to [CO-11, "Changing Engine Coolant"](#).
- Recharge the A/C system. Refer to [HA-28, "HFC-134a \(R-134a\) Service Procedure"](#).
- After installation, perform steering (angle) sensor adjustment. Refer to [BRC-12, "ADJUSTMENT OF STEERING ANGLE SENSOR NEUTRAL POSITION : Special Repair Requirement"](#) (TYPE1), or [BRC-122, "ADJUSTMENT OF STEERING ANGLE SENSOR NEUTRAL POSITION : Special Repair Requirement"](#) (TYPE 2).

**CAUTION:**

- Do not reuse O-rings.
- Apply A/C oil to the O-ring of the low-pressure A/C pipe and high-pressure A/C pipe for installation. Refer to [HA-26, "Component"](#).
- After charging the refrigerant, check for leaks. Refer to [HA-21, "Checking of Refrigerant Leaks"](#).

# EVAPORATOR

< REMOVAL AND INSTALLATION >

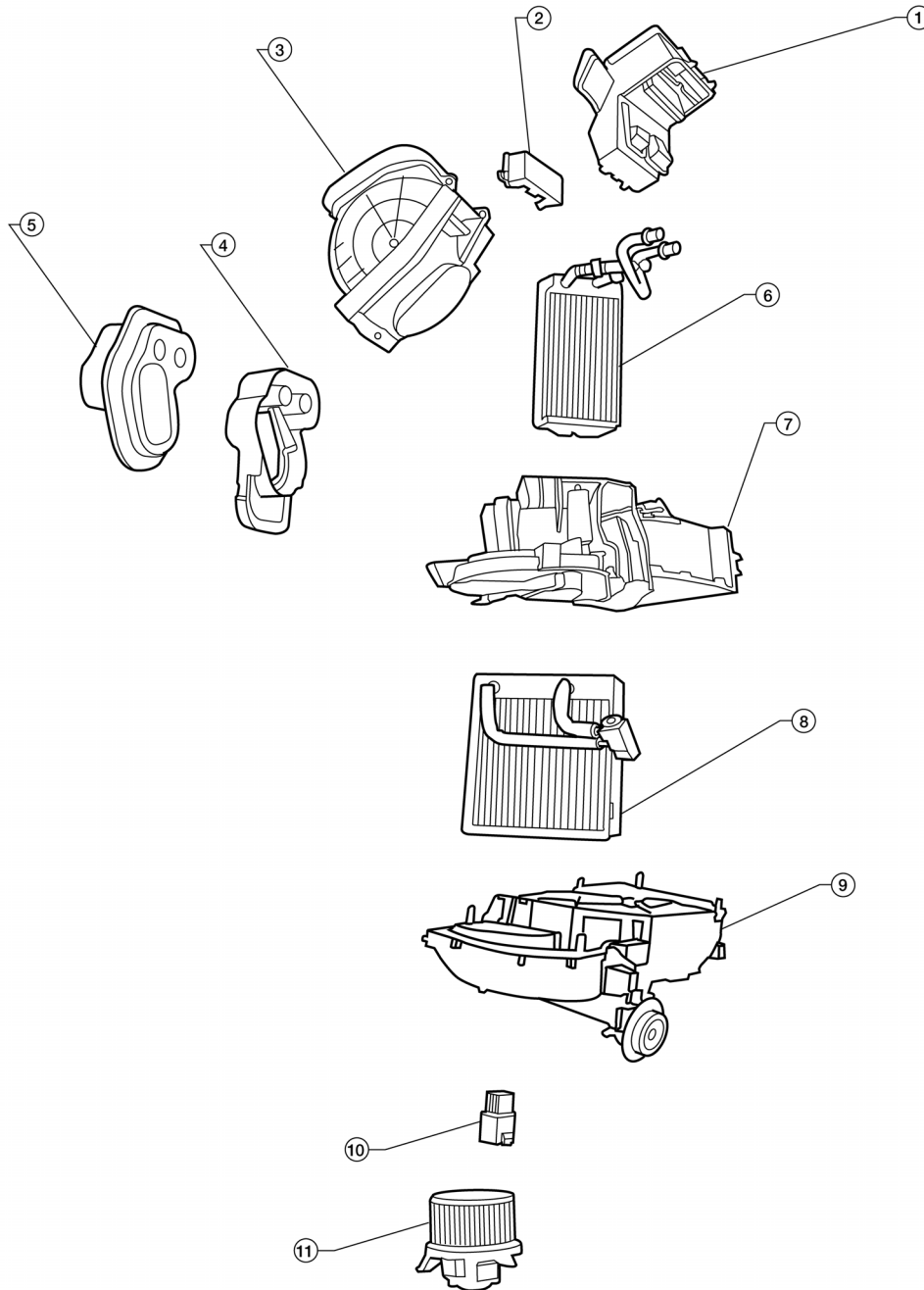
## EVAPORATOR

### Removal and Installation

INFOID:000000007359762

#### Heater and Cooling Unit Assembly

SEC. 270



AWIIA15332Z

- |   |   |                                       |
|---|---|---------------------------------------|
| 1. Center ventilator connector duct                 | 2. Heater core cover                        | 3. Intake air case                    |
| 4. Heater core and evaporator pipes bracket         | 5. Heater core and evaporator pipes grommet | 6. Heater core                        |
| 7. Upper heater and cooling unit case               | 8. Evaporator and expansion valve assembly  | 9. Lower heater and cooling unit case |
| 10. Variable blower control / Blower motor resistor | 11. Blower motor                            |                                       |

# EVAPORATOR

## < REMOVAL AND INSTALLATION >

---

### REMOVAL

1. Remove the heater core. Refer to [VTL-16, "Removal and Installation"](#).
2. Separate the heater and cooling unit case.
3. Remove the evaporator and expansion valve assembly.

### INSTALLATION

Installation is in the reverse order of removal.

#### **CAUTION:**

- **Do not reuse O-rings.**
- **Apply A/C oil to the O-rings on the A/C low-pressure flexible A/C hose and the high-pressure A/C pipe for installation.**

A  
B  
C  
D  
E  
F  
G  
H  
J  
K  
L  
M  
N  
O  
P

VTL

# HEATER CORE

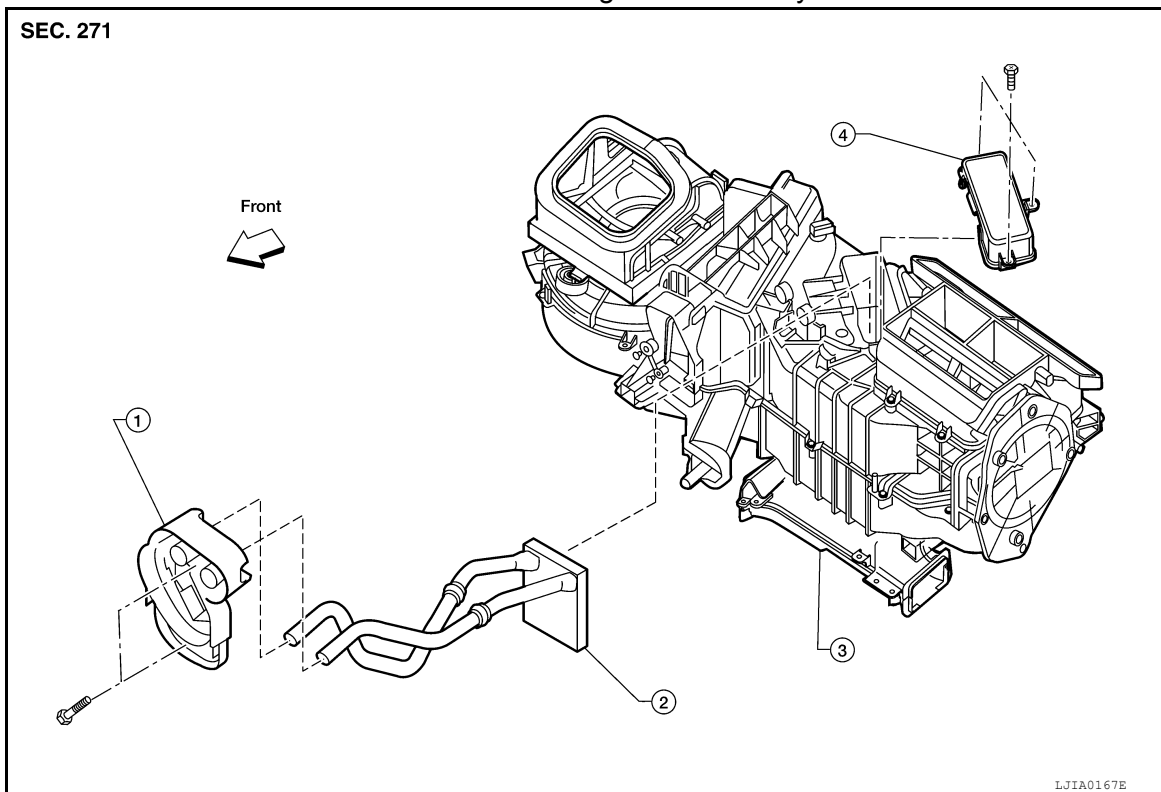
< REMOVAL AND INSTALLATION >

## HEATER CORE

Component

INFOID:000000007359763

### Heater and Cooling Unit Assembly



1. Heater core and evaporator pipe bracket   2. Heater core   3. Heater and cooling unit assembly  
4. Heater core cover

## Removal and Installation

INFOID:000000007359764

### HEATER CORE

#### Removal

1. Remove the heater and cooling unit assembly. Refer to [VTL-12, "Removal and Installation"](#).
2. Remove the three heater core cover screws and the heater core cover.
3. Remove the heater core and evaporator pipe bracket.
4. Remove the heater core.

#### **NOTE:**

If the in-cabin microfilters are contaminated from coolant leaking from the heater core, replace the in-cabin microfilters with new ones before installing the new heater core.

#### Installation

Installation is in the reverse order of removal.



# INTAKE DOOR MOTOR

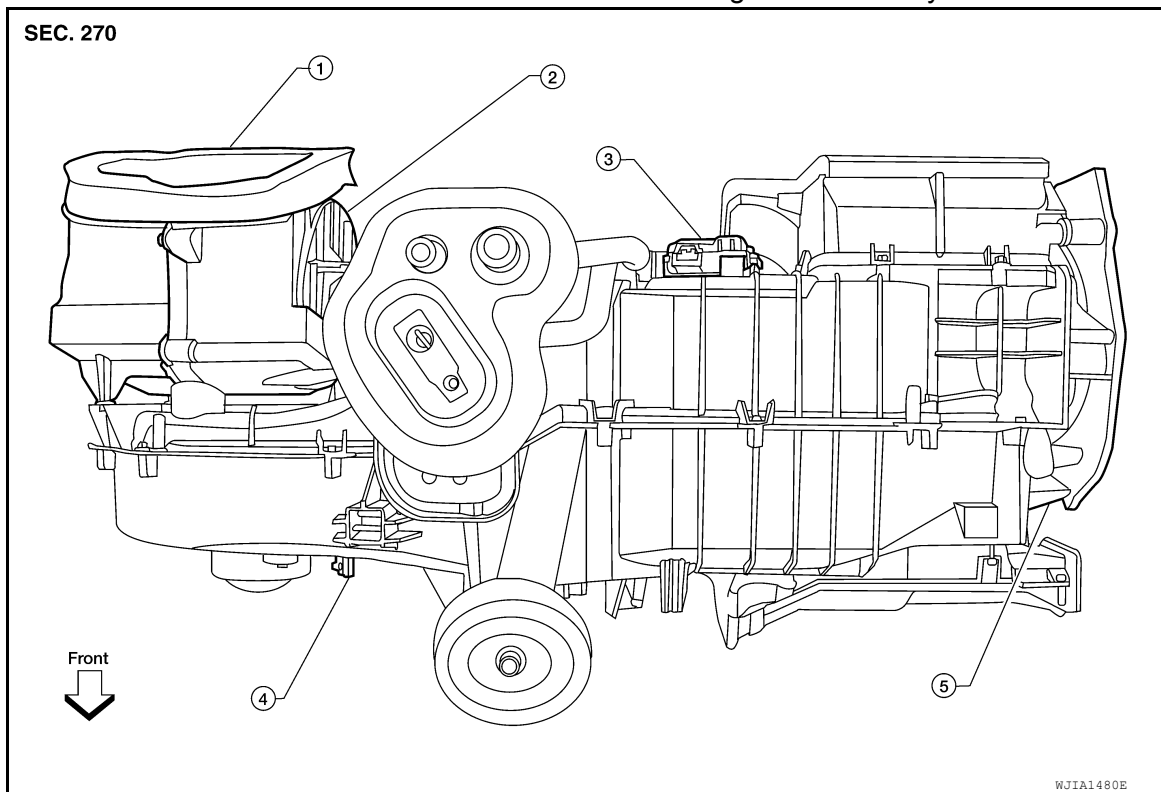
< REMOVAL AND INSTALLATION >

## INTAKE DOOR MOTOR

### Removal and Installation

INFOID:000000007359765

#### Intake Door Motor - Heater and Cooling Unit Assembly



- |  |                      |                       |
|--|----------------------|-----------------------|
| 1. Heater and cooling unit assembly                | 2. Intake door motor | 3. Air mix door motor |
| 4. Variable blower control / Blower motor resistor | 5. Mode door motor   |                       |

### REMOVAL

1. Remove the heater and cooling unit assembly. Refer to [VTL-12. "Removal and Installation"](#).
2. Disconnect the intake door motor electrical connector.
3. Remove the three intake door motor screws and the intake door motor.

### INSTALLATION

Installation is in the reverse order of removal.

A  
B  
C  
D  
E  
F  
G  
H  
VTL  
J  
K  
L  
M  
N  
O  
P

# MODE DOOR MOTOR

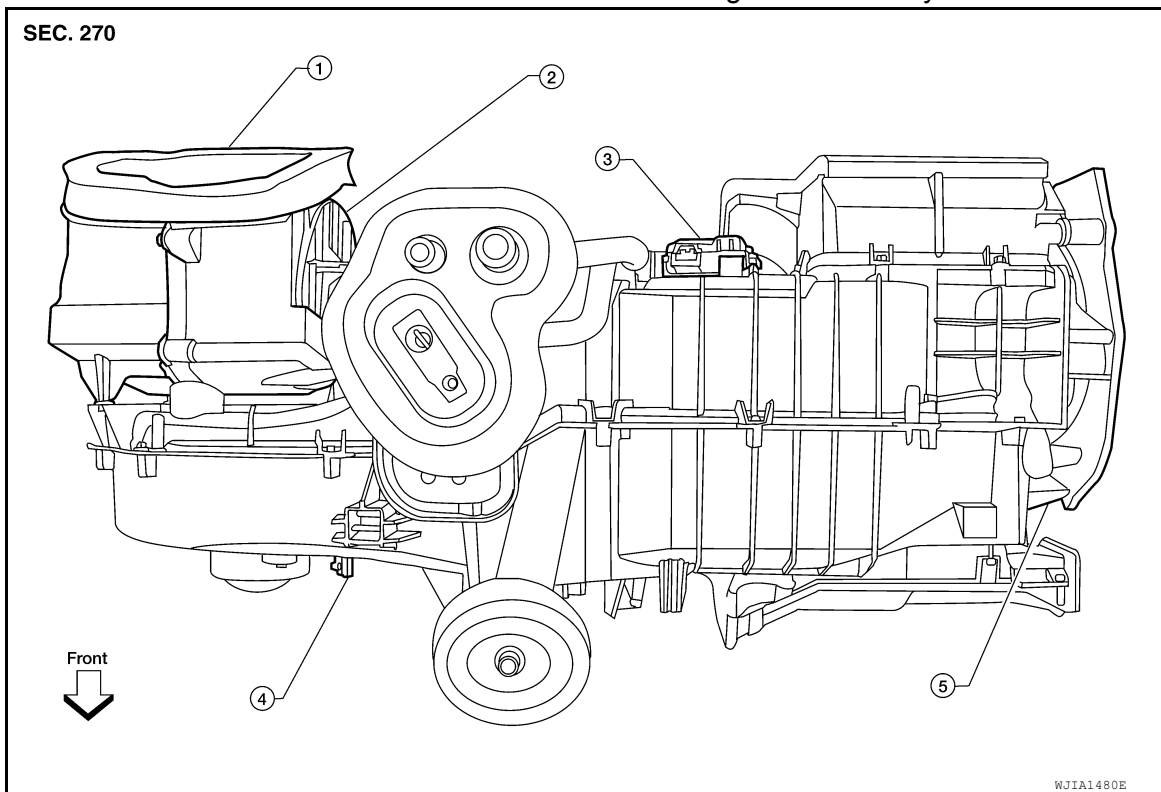
< REMOVAL AND INSTALLATION >

## MODE DOOR MOTOR

### Removal and Installation

INFOID:000000007359766

#### Mode Door Motor - Heater and Cooling Unit Assembly



- |   |                      |                       |
|---|----------------------|-----------------------|
| 1. Heater and cooling unit assembly               | 2. Intake door motor | 3. Air mix door motor |
| 4. Variable blower control/ Blower motor resistor | 5. Mode door motor   |                       |

#### REMOVAL

1. Position the door welt aside.
2. Remove the lower dash side finisher. Refer to [INT-18, "Removal and Installation"](#).
3. Remove the instrument lower panel LH. Refer to [IP-14, "Removal and Installation"](#).
4. Remove the BCM. Refer to [BCS-50, "Removal and Installation"](#).
5. Disconnect the mode door motor harness connector.
6. Remove the three mode door motor screws and the mode door motor.

#### INSTALLATION

Installation is in the reverse order of removal.

# AIR MIX DOOR MOTOR

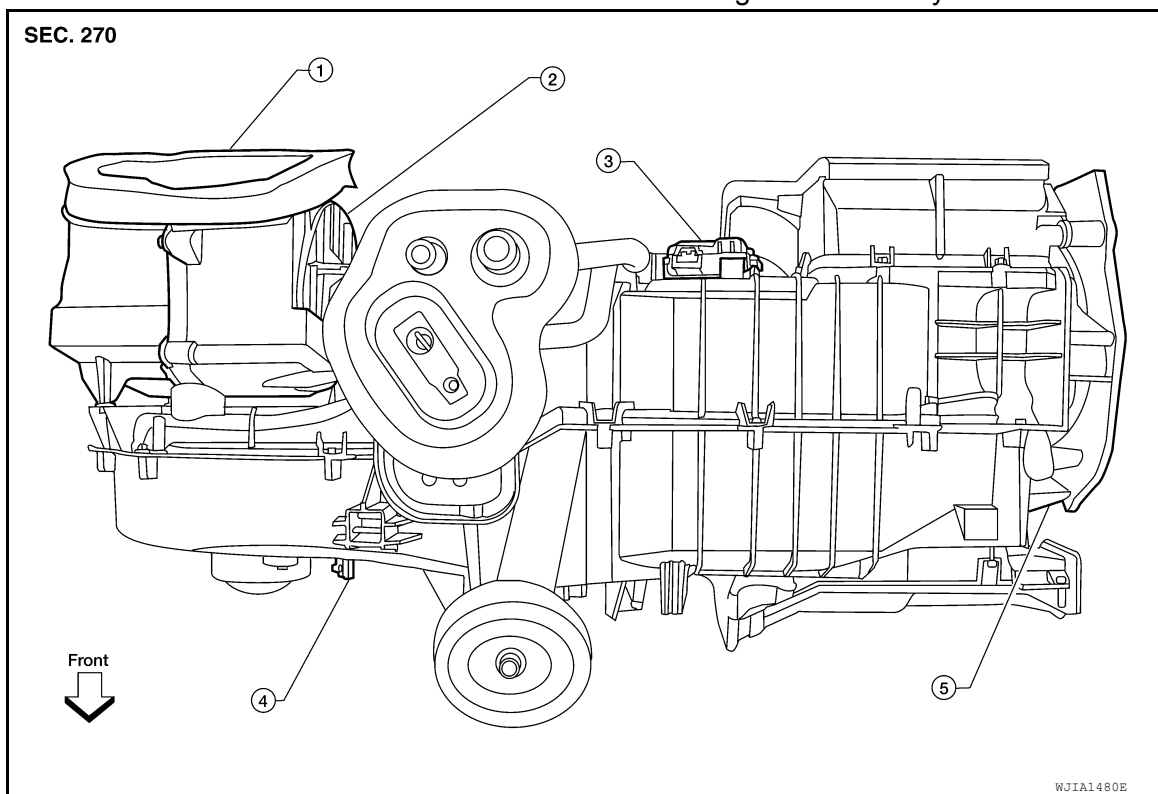
< REMOVAL AND INSTALLATION >

## AIR MIX DOOR MOTOR

### Removal and Installation

INFOID:000000007359767

Air Mix Door Motor - Heater and Cooling Unit Assembly



- |  |                      |                       |
|--|----------------------|-----------------------|
| 1. Heater and cooling unit assembly                | 2. Intake door motor | 3. Air mix door motor |
| 4. Variable blower control / Blower motor resistor | 5. Mode door motor   |                       |

### REMOVAL

1. Remove the heater and cooling unit assembly. Refer to [VTL-12. "Removal and Installation"](#).
2. Disconnect the air mix door motor electrical connector.
3. Remove the three air mix door motor screws and the air mix door motor.

### INSTALLATION

Installation is in the reverse order of removal.

# DUCTS AND GRILLES

< REMOVAL AND INSTALLATION >

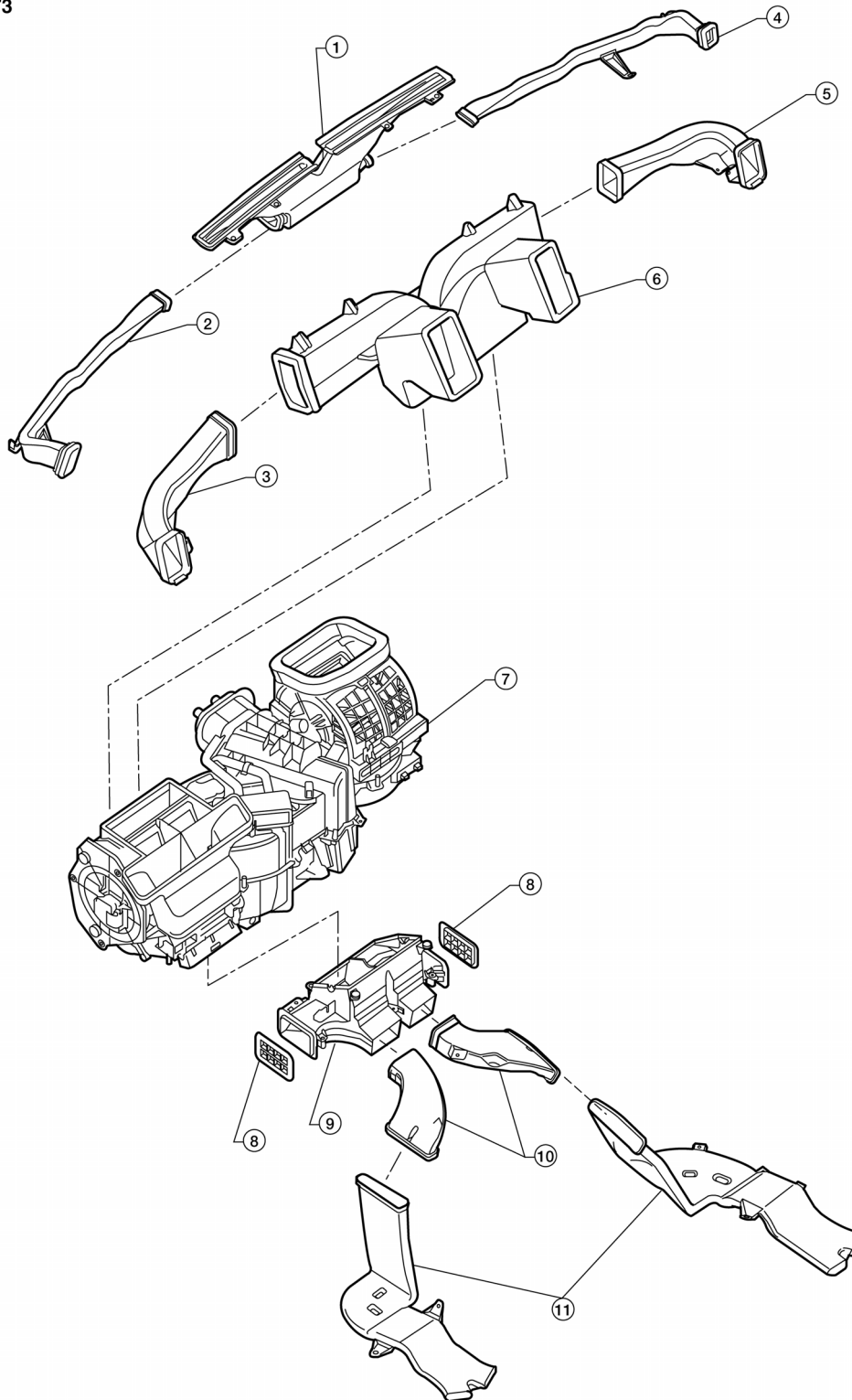
## DUCTS AND GRILLES

Component

INFOID:000000007359768

SEC. 273

### Ducts



AWIIA15412Z

- 1. Defroster nozzle
- 4. RH side demister duct

- 2. LH side demister duct
- 5. RH ventilator duct

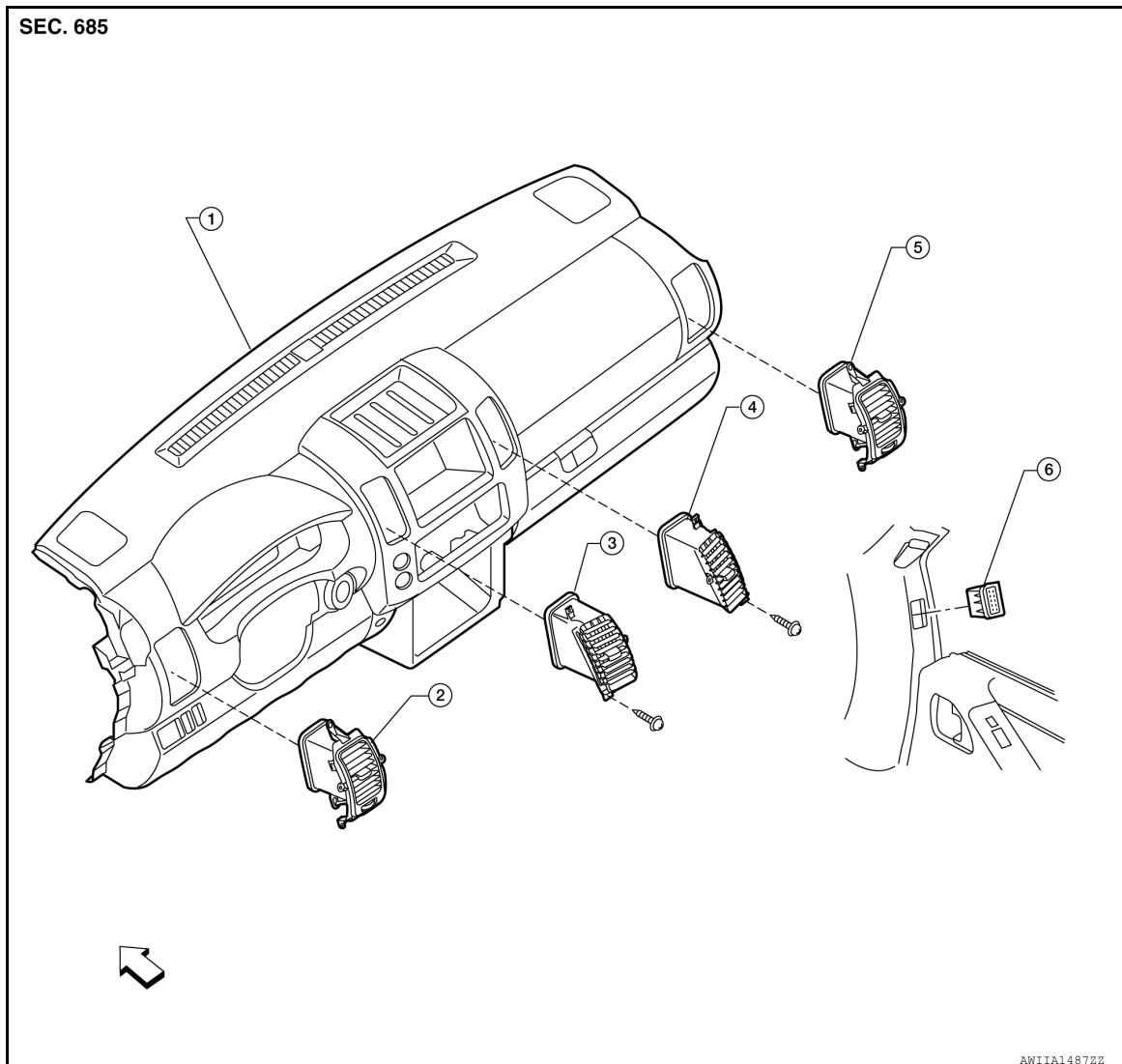
- 3. LH ventilator duct
- 6. Center ventilator duct

# DUCTS AND GRILLES

## < REMOVAL AND INSTALLATION >

- 7. Heater and cooling unit assembly
- 8. Floor connector duct grilles
- 9. Floor connector duct
- 10. Front floor ducts
- 11. Rear floor ducts

### Grilles



- 1. Instrument panel and pad assembly
  - 2. LH side ventilator grille
  - 3. LH ventilator grille
  - 4. RH ventilator grille
  - 5. RH side ventilator grille
  - 6. RH side demister grille
- ↔ Front

## Removal and Installation

INFOID:000000007359769

### DEFROSTER NOZZLE

#### Removal

1. Remove the heater and cooling unit assembly. Refer to [VTL-12, "Removal and Installation"](#).
2. Remove the defroster nozzle.

#### Installation

Installation is in the reverse order of removal.

### RH AND LH SIDE DEMISTER DUCT

#### Removal

1. Remove the heater and cooling unit assembly. Refer to [VTL-12, "Removal and Installation"](#).
2. Remove the RH or LH side demister duct.

## DUCTS AND GRILLES

### < REMOVAL AND INSTALLATION >

---

#### Installation

Installation is in the reverse order of removal.

#### RH AND LH VENTILATOR DUCT

##### Removal

1. Remove the heater and cooling unit assembly. Refer to [VTL-12, "Removal and Installation"](#).
2. Remove the RH or LH ventilator duct.

##### Installation

Installation is in the reverse order of removal.

#### CENTER VENTILATOR DUCT

##### Removal

1. Remove the heater and cooling unit assembly. Refer to [VTL-12, "Removal and Installation"](#).
2. Remove the defroster nozzle.
3. Remove the RH and LH ventilator ducts.
4. Remove the RH and LH side demister ducts.
5. Remove the center ventilator duct.

##### Installation

Installation is in the reverse order of removal.

#### FLOOR CONNECTOR DUCT

##### Removal

1. Remove the heater and cooling unit assembly. Refer to [VTL-12, "Removal and Installation"](#).
2. Remove the floor connector duct.

##### Installation

Installation is in the reverse order of removal.

#### FRONT AND REAR FLOOR DUCTS

##### Removal

1. Remove the floor carpet. Refer to [INT-19, "Removal and Installation"](#).
2. Remove the clips and remove the front and rear floor ducts.

##### Installation

Installation is in the reverse order of removal.

#### GRILLES

##### Removal

1. Remove the necessary interior trim panel(s) to access the grille. Refer to [IP-10, "Exploded View"](#).
2. Remove the grille from the interior trim panel.

##### Installation

Installation is in the reverse order of removal.